

For Research Use Only

PKC Zeta Polyclonal antibody

Catalog Number: 10860-1-AP

Featured Product

2 Publications



Basic Information

Catalog Number: 10860-1-AP	GenBank Accession Number: BC014270	Purification Method: Antigen affinity purification
Size: 150ul , Concentration: 300 µg/ml by Nanodrop and 200 µg/ml by Bradford method using BSA as the standard;	GeneID (NCBI): 5590	Recommended Dilutions: WB 1:500-1:1000 IHC 1:50-1:500
Source: Rabbit	Full Name: protein kinase C, zeta	
Isotype: IgG	Calculated MW: 80 kDa	
Immunogen Catalog Number: AG1310	Observed MW: 68 kDa	

Applications

Tested Applications: IHC, WB, ELISA	Positive Controls: WB : HEK-293 cells, NIH/3T3 cells
Cited Applications: IF, IHC, WB	IHC : human breast cancer tissue,
Species Specificity: human, mouse	
Cited Species: human, mouse	

Note-IHC: suggested antigen retrieval with TE buffer pH 9.0; (*) Alternatively, antigen retrieval may be performed with citrate buffer pH 6.0

Background Information

Notable Publications

Author	Pubmed ID	Journal	Application
Hao-Fan Wang	36077689	Cancers (Basel)	WB, IHC
Alejandro M Chibly	29679075	Sci Rep	IF

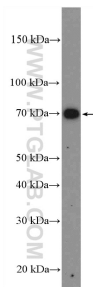
Storage

Storage:
Store at -20°C. Stable for one year after shipment.
Storage Buffer:
PBS with 0.02% sodium azide and 50% glycerol pH 7.3.
Aliquoting is unnecessary for -20°C storage

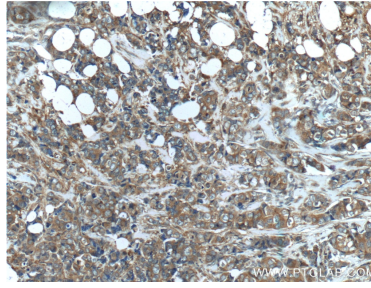
For technical support and original validation data for this product please contact:
T: 1 (888) 4PTGLAB (1-888-478-4522) (toll free in USA), or 1(312) 455-8498 (outside USA)
E: proteintech@ptglab.com
W: ptglab.com

This product is exclusively available under Proteintech Group brand and is not available to purchase from any other manufacturer.

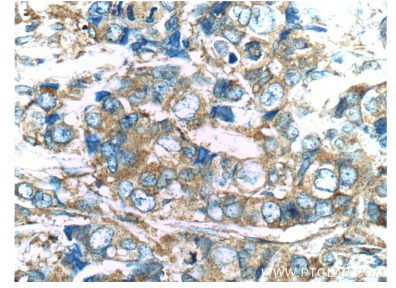
Selected Validation Data



HEK-293 cells were subjected to SDS PAGE followed by western blot with 10860-1-AP (PKC zeta antibody at dilution of 1:600 incubated at room temperature for 1.5 hours.



Immunohistochemical analysis of paraffin-embedded human breast cancer tissue slide using 10860-1-AP (PKC zeta antibody at dilution of 1:200 (under 10x lens).



Immunohistochemical analysis of paraffin-embedded human breast cancer tissue slide using 10860-1-AP (PKC zeta antibody at dilution of 1:200 (under 40x lens).