

For Research Use Only

LYPLA3 Polyclonal antibody

Catalog Number: 10863-2-AP



Basic Information

Catalog Number: 10863-2-AP	GenBank Accession Number: BC011640	Purification Method: Antigen affinity purification
Size: 150ul , Concentration: 600 µg/ml by Nanodrop;	GeneID (NCBI): 23659	Recommended Dilutions: WB 1:500-1:2000 IHC 1:50-1:500
Source: Rabbit	Full Name: phospholipase A2, group XV	
Isotype: IgG	Calculated MW: 47 kDa	
Immunogen Catalog Number: AG1304	Observed MW: 42-57 kDa	

Applications

Tested Applications: IHC, WB, ELISA	Positive Controls:
Species Specificity: human, mouse	WB : mouse spleen tissue, mouse kidney tissue IHC : human liver cancer tissue,

Note-IHC: suggested antigen retrieval with TE buffer pH 9.0; (*) Alternatively, antigen retrieval may be performed with citrate buffer pH 6.0

Background Information

PLA2G15 is also named as LYPLA3 and belongs to the AB hydrolase superfamily. It has transacylase and calcium-independent phospholipase A2 activity. PLA2G15 catalyzes the formation of 1-O-acyl-N-acetylsphingosine and the concomitant release of a lyso-phospholipid. It can be detected as 42-47 kDa and 57 kDa due to the N-glycosylated modification (PMID:11790796).

Storage

Storage:
Store at -20°C. Stable for one year after shipment.
Storage Buffer:
PBS with 0.02% sodium azide and 50% glycerol pH 7.3.
Aliquoting is unnecessary for -20°C storage

*** 20ul sizes contain 0.1% BSA

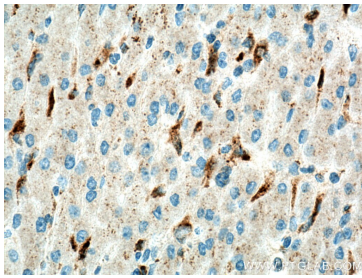
For technical support and original validation data for this product please contact:

T: 1 (888) 4PTGLAB (1-888-478-4522) (toll free in USA), or 1(312) 455-8498 (outside USA)

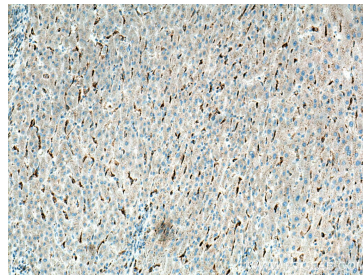
E: proteintech@ptglab.com
W: ptglab.com

This product is exclusively available under Proteintech Group brand and is not available to purchase from any other manufacturer.

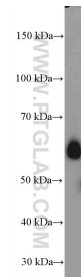
Selected Validation Data



Immunohistochemical analysis of paraffin-embedded human liver cancer tissue slide using 10863-2-AP (LYPLA3 antibody) at dilution of 1:200 (under 40x lens)..



Immunohistochemical analysis of paraffin-embedded human liver cancer tissue slide using 10863-2-AP (LYPLA3 antibody) at dilution of 1:200 (under 10x lens)..



mouse spleen tissue were subjected to SDS PAGE followed by western blot with 10863-2-AP (LYPLA3 antibody) at dilution of 1:1000 incubated at room temperature for 1.5 hours.