

For Research Use Only

# HAND1 Polyclonal antibody, PBS Only

Catalog Number:10882-1-PBS



## Basic Information

**Catalog Number:**

10882-1-PBS

**Size:**

100ug , Concentration: 1 mg/ml by Nanodrop;

**Source:**

Rabbit

**Isotype:**

IgG

**Immunogen Catalog Number:**

AG1324

**GenBank Accession Number:**

BC021190

**GeneID (NCBI):**

9421

**UNIPROT ID:**

O96004

**Full Name:**

heart and neural crest derivatives expressed 1

**Calculated MW:**

24 kDa

**Observed MW:**

24 kDa

**Purification Method:**

Antigen affinity purification

## Applications

**Tested Applications:**

WB, Indirect ELISA

**Species Specificity:**

human

## Background Information

The HAND1 gene encodes a basic helix-loop-helix (bHLH) transcription factor essential for mammalian heart development (PMID:19586923). HAND1 is highly expressed in the heart and in cytotrophoblastic cell lines, and is required in the adult for sustained expression of cardiac-specific genes (PMID:9931445).

## Storage

**Storage:**

Store at -80°C.

**Storage Buffer:**

PBS only, pH7.3

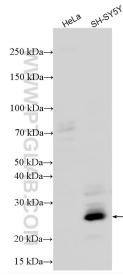
For technical support and original validation data for this product please contact:

T: 1 (888) 4PTGLAB (1-888-478-4522) (toll free in USA), or 1(312) 455-8498 (outside USA)

E: [proteintech@ptglab.com](mailto:proteintech@ptglab.com)  
W: [ptglab.com](http://ptglab.com)

**This product is exclusively available under Proteintech Group brand and is not available to purchase from any other manufacturer.**

## Selected Validation Data



SH-SY5Y (positive) and HeLa (negative) cells were subjected to SDS PAGE followed by western blot with 10882-1-AP (HAND1 antibody) at dilution of 1:1000 incubated at room temperature for 1.5 hours. This data was developed using the same antibody clone with 10882-1-PBS in a different storage buffer formulation.