

For Research Use Only

ETF1 Polyclonal antibody

Catalog Number: 10884-1-AP **1 Publications**



Basic Information

Catalog Number: 10884-1-AP	GenBank Accession Number: BC014269	Purification Method: Antigen affinity purification
Size: 150ul , Concentration: 450 µg/ml by Nanodrop and 333 µg/ml by Bradford method using BSA as the standard;	GeneID (NCBI): 2107	Recommended Dilutions: WB 1:500-1:3000 IHC 1:20-1:200 IF 1:10-1:100
Source: Rabbit	Full Name: eukaryotic translation termination factor 1	
Isotype: IgG	Calculated MW: 48 kDa	
Immunogen Catalog Number: AG1330	Observed MW: 48 kDa	

Applications

Tested Applications:

IF, IHC, WB, ELISA

Cited Applications:

IF

Species Specificity:

human, mouse, rat

Cited Species:

human

Note-IHC: suggested antigen retrieval with TE buffer pH 9.0; (*) Alternatively, antigen retrieval may be performed with citrate buffer pH 6.0

Positive Controls:

WB : HEK-293 cells, mouse testis tissue, SKOV-3 cells, T-47D cells, mouse kidney tissue, rat kidney tissue

IHC : human pancreas cancer tissue, human testis tissue

IF : HeLa cells,

Background Information

Termination of protein biosynthesis and release of the nascent polypeptide chain are signaled by the presence of an in-frame stop codon at the aminoacyl site of the ribosome, which is mediated by protein release factors (RFs) and GTP. A class 1 RF recognizes the stop codon and promotes the hydrolysis of the ester bond linking the polypeptide chain with the peptidyl site tRNA, a reaction catalyzed at the peptidyl transferase center of the ribosome. Class 2 RFs, which are not codon specific and do not recognize codons, stimulate class 1 RF activity and confer GTP dependency upon the process. In eukaryotes a single class-1 translation termination factor eRF1 decodes the three stop codons: UAA, UAG and UGA. [PMID:7990965,20860996]

Notable Publications

Author	Pubmed ID	Journal	Application
Desislava S Makeeva	36672194	Cells	IF

Storage

Storage:

Store at -20°C. Stable for one year after shipment.

Storage Buffer:

PBS with 0.02% sodium azide and 50% glycerol pH 7.3.

Aliquoting is unnecessary for -20°C storage

***** 20ul sizes contain 0.1% BSA**

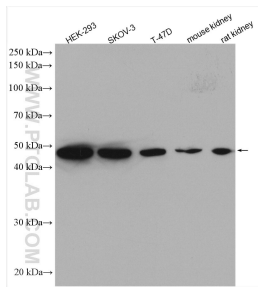
For technical support and original validation data for this product please contact:

T: 1 (888) 4PTGLAB (1-888-478-4522) (toll free in USA), or 1(312) 455-8498 (outside USA)

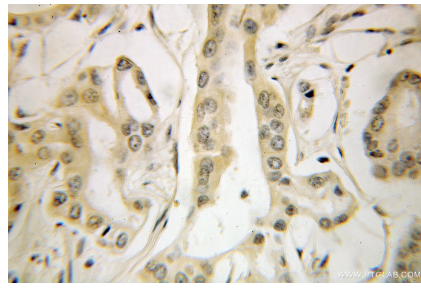
E: proteintech@ptglab.com
W: ptglab.com

This product is exclusively available under Proteintech Group brand and is not available to purchase from any other manufacturer.

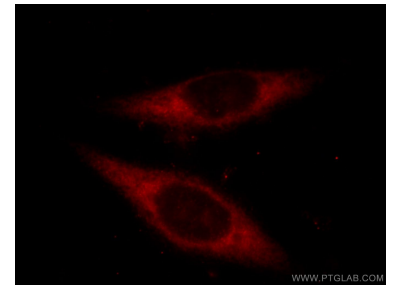
Selected Validation Data



Various lysates were subjected to SDS PAGE followed by western blot with 10884-1-AP (ETF1 antibody) at dilution of 1:1500 incubated at room temperature for 1.5 hours.



Immunohistochemical analysis of paraffin-embedded human pancreas cancer using 10884-1-AP (ETF1 antibody) at dilution of 1:100 (under 40x lens).



Immunofluorescent analysis of HeLa cells, using ETF1 antibody 10884-1-AP at 1:25 dilution and Rhodamine-labeled goat anti-rabbit IgG (red).