

For Research Use Only

# PLDN Polyclonal antibody

Catalog Number: 10891-2-AP

Featured Product

19 Publications



## Basic Information

**Catalog Number:**  
10891-2-AP

**Size:**  
150ul, Concentration: 800 µg/ml by Nanodrop and 333 µg/ml by Bradford method using BSA as the standard;

**Source:**  
Rabbit

**Isotype:**  
IgG

**Immunogen Catalog Number:**  
AG1337

**GenBank Accession Number:**  
BC004819

**GeneID (NCBI):**  
26258

**Full Name:**  
pallidin homolog (mouse)

**Calculated MW:**  
23~24 kDa

**Observed MW:**  
25 kDa

**Purification Method:**  
Antigen affinity purification

**Recommended Dilutions:**  
WB 1:1000-1:4000  
IP 0.5-4.0 ug for IP and 1:500-1:1000 for WB  
IHC 1:50-1:500

## Applications

**Tested Applications:**  
IHC, IP, WB, ELISA

**Cited Applications:**  
IF, IP, WB

**Species Specificity:**  
human, mouse, rat

**Cited Species:**  
human, rat, mouse

**Positive Controls:**

**WB:** A431 cells, HeLa cells, K-562 cells

**IP:** K-562 cells,

**IHC:** human breast cancer tissue,

**Note-IHC: suggested antigen retrieval with TE buffer pH 9.0; (\*) Alternatively, antigen retrieval may be performed with citrate buffer pH 6.0**

## Background Information

Pallidin, also named as PLDN and PA, is involved in the development of lysosome-related organelles, such as melanosomes and platelet-dense granules. It may play a role in intracellular vesicle trafficking, particularly in the vesicle-docking and fusion process. Pallidin interacts with syntaxin-12 which is a t-SNARE protein that mediates vesicle docking and fusion. Pallidin is a 25 kDa subunit of the octamer BLOC-1.

## Notable Publications

Author	Pubmed ID	Journal	Application
Meng-Hsuan Jerry Han	25198678	J Proteome Res	WB
Ankush Bortepawar	33142804	Cells	WB
Seunghyi Kook	29190429	Am J Respir Cell Mol Biol	WB

## Storage

**Storage:**

Store at -20°C. Stable for one year after shipment.

**Storage Buffer:**

PBS with 0.02% sodium azide and 50% glycerol pH 7.3.

Aliquoting is unnecessary for -20°C storage

\*\*\* 20ul sizes contain 0.1% BSA

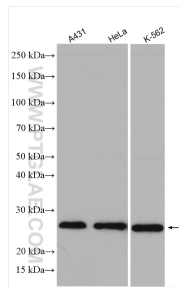
For technical support and original validation data for this product please contact:

T: 1 (888) 4PTGLAB (1-888-478-4522) (toll free in USA), or 1(312) 455-8498 (outside USA)

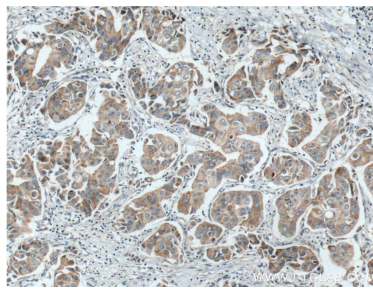
E: proteintech@ptglab.com  
W: ptglab.com

This product is exclusively available under Proteintech Group brand and is not available to purchase from any other manufacturer.

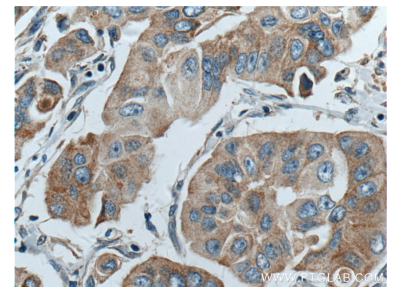
## Selected Validation Data



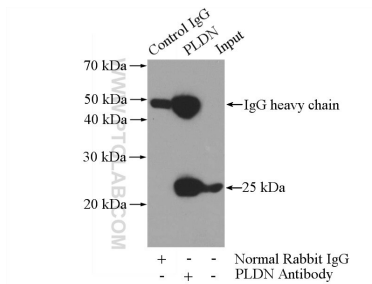
Various lysates were subjected to SDS PAGE followed by western blot with 10891-2-AP (PLDN antibody) at dilution of 1:2000 incubated at room temperature for 1.5 hours.



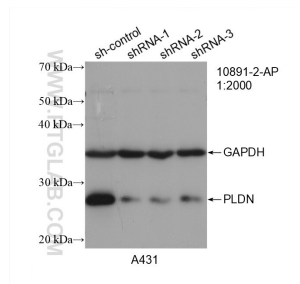
Immunohistochemical analysis of paraffin-embedded human breast cancer tissue slide using 10891-2-AP (PLDN antibody) at dilution of 1:200 (under 10x lens. Heat mediated antigen retrieval with Tris-EDTA buffer (pH 9.0).



Immunohistochemical analysis of paraffin-embedded human breast cancer tissue slide using 10891-2-AP (PLDN antibody) at dilution of 1:200 (under 40x lens. Heat mediated antigen retrieval with Tris-EDTA buffer (pH 9.0).



IP Result of anti-PLDN (IP:10891-2-AP, 3ug; Detection:10891-2-AP 1:500) with K-562 cells lysate 3600ug.



WB result of PLDN antibody (10891-2-AP; 1:2000; incubated at room temperature for 1.5 hours) with sh-Control and sh-PLDN transfected A431 cells.