

For Research Use Only

CSRP2 Polyclonal antibody

Catalog Number: 10892-2-AP

Featured Product

6 Publications



Basic Information

Catalog Number:

10892-2-AP

Size:

150ul, Concentration: 800 ug/ml by Nanodrop;

Source:

Rabbit

Isotype:

IgG

Immunogen Catalog Number:

AG1338

GenBank Accession Number:

BC000992

GeneID (NCBI):

1466

UNIPROT ID:

Q16527

Full Name:

cysteine and glycine-rich protein 2

Calculated MW:

21 kDa

Observed MW:

21 kDa

Purification Method:

Antigen affinity purification

Recommended Dilutions:

WB 1:500-1:2000

IP 0.5-4.0 ug for 1.0-3.0 mg of total protein lysate

Applications

Tested Applications:

WB, IP, ELISA

Cited Applications:

WB, IHC, IF, CoIP

Species Specificity:

human, mouse, rat

Cited Species:

human, mouse, rat

Positive Controls:

WB : HepG2 cells, mouse kidney tissue, rat kidney tissue

IP : mouse liver tissue,

Notable Publications

Author	Pubmed ID	Journal	Application
Xinghe Chen	36414118	Toxicol Appl Pharmacol	WB,IF
Esther Imperlini	29142197	Sci Rep	WB
Dongsheng Lv	39918019	Oncol Rep	WB,IHC,CoIP

Storage

Storage:

Store at -20°C. Stable for one year after shipment.

Storage Buffer:

PBS with 0.02% sodium azide and 50% glycerol, pH7.3

Aliquoting is unnecessary for -20°C storage

*** 20ul sizes contain 0.1% BSA

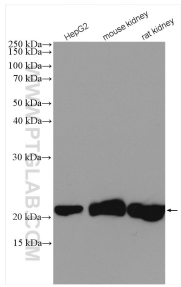
For technical support and original validation data for this product please contact:

T: 1 (888) 4PTGLAB (1-888-478-4522) (toll free in USA), or 1(312) 455-8498 (outside USA)

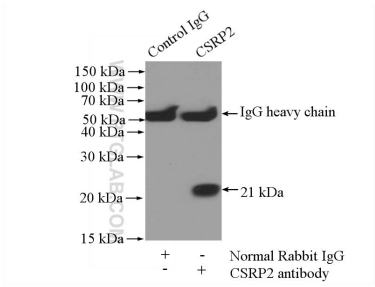
E: proteintech@ptglab.com
W: ptglab.com

This product is exclusively available under Proteintech Group brand and is not available to purchase from any other manufacturer.

Selected Validation Data



Various lysates were subjected to SDS PAGE followed by western blot with 10892-2-AP (CSRP2 antibody) at dilution of 1:1000 incubated at room temperature for 1.5 hours.



IP result of anti-CSRP2 (IP:10892-2-AP, 4ug; Detection:10892-2-AP 1:1000) with mouse liver tissue lysate 4000ug.