

For Research Use Only

PHF11 Polyclonal antibody

Catalog Number: 10898-1-AP

Featured Product

6 Publications



Basic Information

Catalog Number: 10898-1-AP	GenBank Accession Number: BC017212	Purification Method: Antigen affinity purification
Size: 150ul, Concentration: 650 µg/ml by Nanodrop and 367 µg/ml by Bradford method using BSA as the standard;	GeneID (NCBI): 51131	Recommended Dilutions: WB 1:500-1:1000 IHC 1:20-1:200
Source: Rabbit	Full Name: PHD finger protein 11	
Isotype: IgG	Calculated MW: 34 kDa	
Immunogen Catalog Number: AG1318	Observed MW: 34 kDa	

Applications

Tested Applications: IHC, WB, ELISA	Positive Controls: WB : HeLa cells, HEK-293 cells, mouse thymus tissue IHC : human lymphoma tissue,
Cited Applications: IF, IP, WB	
Species Specificity: human, mouse	
Cited Species: human, mouse	
Note-IHC: suggested antigen retrieval with TE buffer pH 9.0; (*) Alternatively, antigen retrieval may be performed with citrate buffer pH 6.0	

Background Information

PHF11 is a transcriptional co-activator of the Th1 effector cytokine genes, interleukin-2 (IL2) and interferon-γ (IFNG), co-operating with nuclear factor kappa B (NF-κB). The reduction in PHF11 expression seen with an AD-associated genotype could contribute to the strong T(H)2 responses that characterize many allergic individuals.

Notable Publications

Author	Pubmed ID	Journal	Application
Pauline Muscat	26573531	BMC Immunol	IF
Mehdi Eshraghi	33674575	Nat Commun	WB
Melissa Kane	32678836	PLoS Pathog	WB

Storage

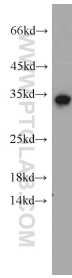
Storage:
Store at -20°C. Stable for one year after shipment.
Storage Buffer:
PBS with 0.02% sodium azide and 50% glycerol pH 7.3.
Aliquoting is unnecessary for -20°C storage

*** 20ul sizes contain 0.1% BSA

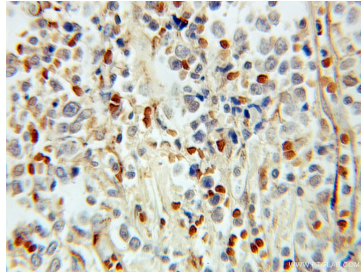
For technical support and original validation data for this product please contact:
T: 1 (888) 4PTGLAB (1-888-478-4522) (toll free in USA), or 1(312) 455-8498 (outside USA)
E: proteintech@ptglab.com
W: ptglab.com

This product is exclusively available under Proteintech Group brand and is not available to purchase from any other manufacturer.

Selected Validation Data



HeLa cells were subjected to SDS PAGE followed by western blot with 10898-1-AP (PHF11 antibody) at dilution of 1:300 incubated at room temperature for 1.5 hours.



Immunohistochemical analysis of paraffin-embedded human lymphoma using 10898-1-AP (PHF11 antibody) at dilution of 1:100 (under 10x lens).