

For Research Use Only

NAT8 Polyclonal antibody, PBS Only

Catalog Number:10908-1-PBS



Basic Information

Catalog Number:

10908-1-PBS

Size:

100ug , Concentration: 1 mg/ml by Nanodrop;

Source:

Rabbit

Isotype:

IgG

Immunogen Catalog Number:

AG1353

GenBank Accession Number:

BC012626

GeneID (NCBI):

9027

UNIPROT ID:

Q9UHE5

Full Name:

N-acetyltransferase 8 (GCN5-related, putative)

Calculated MW:

26 kDa

Observed MW:

25 kDa

Purification Method:

Antigen affinity purification

Applications

Tested Applications:

WB, Indirect ELISA

Species Specificity:

human, mouse

Background Information

NAT8 (N-acetyltransferase 8), also known as ATase2 or camello-like protein 1, is a microsomal enzyme predominantly expressed in the kidney and liver. It catalyzes the final step in mercapturic acid formation by acetylating cysteine S-conjugates, facilitating the detoxification and excretion of electrophilic xenobiotics. Additionally, NAT8 exhibits protein lysine N-acetyltransferase activity, regulating apoptosis and amyloid-beta secretion through BACE1 acetylation. Genetic variants of NAT8 have been implicated in chronic kidney disease progression and blood pressure regulation. (PMID: 20392701; 18402670)

Storage

Storage:

Store at -80°C.

Storage Buffer:

PBS only, pH7.3

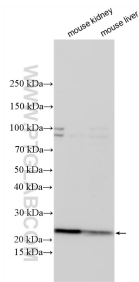
For technical support and original validation data for this product please contact:

T: 1 (888) 4PTGLAB (1-888-478-4522) (toll free in USA), or 1(312) 455-8498 (outside USA)

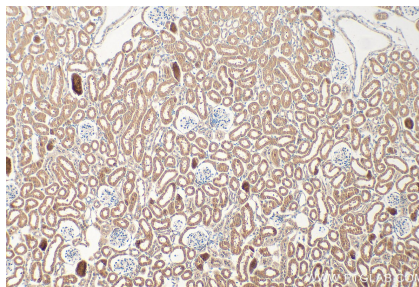
E: proteintech@ptglab.com
W: ptglab.com

This product is exclusively available under Proteintech Group brand and is not available to purchase from any other manufacturer.

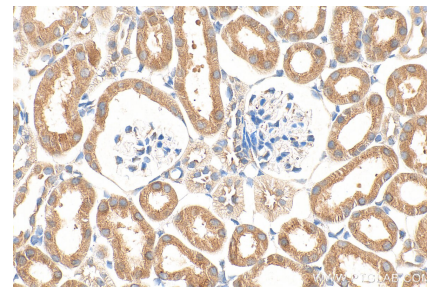
Selected Validation Data



Various lysates were subjected to SDS PAGE followed by western blot with 10908-1-AP (NAT8 antibody) at dilution of 1:1000 incubated at room temperature for 1.5 hours. This data was developed using the same antibody clone with 10908-1-PBS in a different storage buffer formulation.



Immunohistochemical analysis of paraffin-embedded mouse kidney tissue slide using 10908-1-AP (NAT8 antibody) at dilution of 1:200 (under 10x lens). Heat mediated antigen retrieval with Tris-EDTA buffer (pH 9.0). This data was developed using the same antibody clone with 10908-1-PBS in a different storage buffer formulation.



Immunohistochemical analysis of paraffin-embedded mouse kidney tissue slide using 10908-1-AP (NAT8 antibody) at dilution of 1:200 (under 40x lens). Heat mediated antigen retrieval with Tris-EDTA buffer (pH 9.0). This data was developed using the same antibody clone with 10908-1-PBS in a different storage buffer formulation.