

For Research Use Only

ATP5C1 Polyclonal antibody

Catalog Number: 10910-1-AP

7 Publications



Basic Information

Catalog Number: 10910-1-AP	GenBank Accession Number: BC000931	Purification Method: Antigen affinity purification
Size: 150ul, Concentration: 550 ug/ml by Nanodrop and 320 ug/ml by Bradford method using BSA as the standard;	GeneID (NCBI): 509	Recommended Dilutions: WB 1:500-1:3000 IHC 1:250-1:1000 IF/ICC 1:200-1:800
Source: Rabbit	UNIPROT ID: P36542	
Isotype: IgG	Full Name: ATP synthase, H ⁺ transporting, mitochondrial F1 complex, gamma polypeptide 1	
Immunogen Catalog Number: AG1343	Calculated MW: 33 kDa	
	Observed MW: 33 kDa	

Applications

Tested Applications: WB, IHC, IF/ICC, ELISA	Positive Controls: WB : mouse brain tissue, human heart tissue, human skeletal muscle tissue, mouse skeletal muscle tissue, rat brain tissue, rat skeletal muscle tissue IHC : human liver cancer tissue, IF/ICC : HepG2 cells,
Cited Applications: WB, IP	
Species Specificity: human, mouse, rat	
Cited Species: human, mouse	
Note-IHC: suggested antigen retrieval with TE buffer pH 9.0; (*) Alternatively, antigen retrieval may be performed with citrate buffer pH 6.0	

Background Information

ATP5C1(ATP synthase subunit gamma, mitochondrial) is also named as ATP5C, ATP5CL1 and belongs to the ATPase gamma chain family. Some scientists reported the complete sequence of the gene for the human ATP synthase gamma subunit and described tissue-specific isoforms of the subunit generated by alternative splicing of exon 9. The liver (L) isoform differed from the heart (H) isoform by the addition of a single amino acid (asp273) at the C terminus. (PMID:8227057).

Notable Publications

Author	Pubmed ID	Journal	Application
Zhenhong Ni	29165041	Autophagy	WB,IP
Stephanie M J Fliedner	22859959	PLoS One	WB
Xinxin Zuo	33398173	Nat Struct Mol Biol	WB

Storage

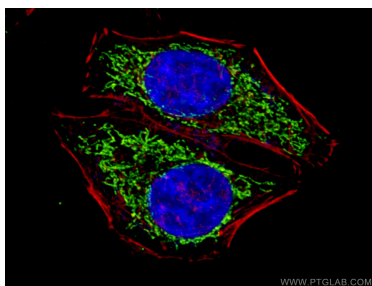
Storage:
Store at -20°C. Stable for one year after shipment.
Storage Buffer:
PBS with 0.02% sodium azide and 50% glycerol pH 7.3.
Aliquoting is unnecessary for -20°C storage

*** 20ul sizes contain 0.1% BSA

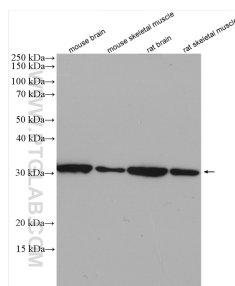
For technical support and original validation data for this product please contact:
T: 1 (888) 4PTGLAB (1-888-478-4522) (toll free in USA), or 1(312) 455-8498 (outside USA)
E: proteintech@ptglab.com
W: ptglab.com

This product is exclusively available under Proteintech Group brand and is not available to purchase from any other manufacturer.

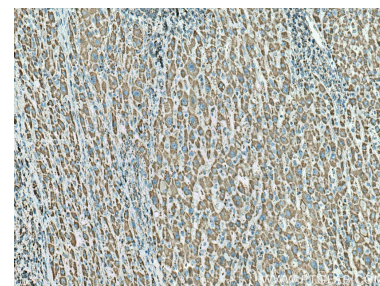
Selected Validation Data



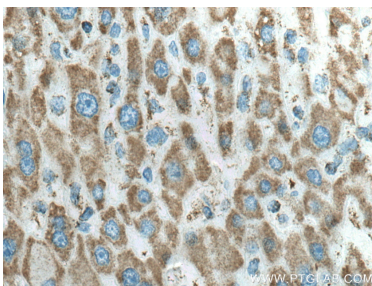
Immunofluorescent analysis of (4% PFA) fixed HepG2 cells using 10910-1-AP (ATP5C1 antibody) at dilution of 1:100 and CoraLite488-Conjugated AffiniPure Goat Anti-Rabbit IgG(H+L); Phalloidin stains F-actin (Red).



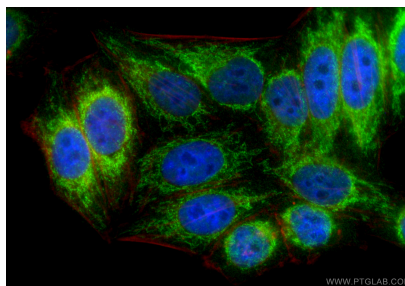
Various lysates were subjected to SDS PAGE followed by western blot with 10910-1-AP (ATP5C1 antibody) at dilution of 1:1500 incubated at room temperature for 1.5 hours.



Immunohistochemical analysis of paraffin-embedded human liver cancer tissue slide using 10910-1-AP (ATP5C1 antibody) at dilution of 1:500 (under 10x lens). Heat mediated antigen retrieval with Tris-EDTA buffer (pH 9.0).



Immunohistochemical analysis of paraffin-embedded human liver cancer tissue slide using 10910-1-AP (ATP5C1 antibody) at dilution of 1:500 (under 40x lens). Heat mediated antigen retrieval with Tris-EDTA buffer (pH 9.0).



Immunofluorescent analysis of (4% PFA) fixed HepG2 cells using ATP5C1 antibody (10910-1-AP) at dilution of 1:400 and CoraLite®488-Conjugated Goat Anti-Rabbit IgG(H+L) (SA00013-2), CL594-Phalloidin (red).