

For Research Use Only

SULT1A1 Polyclonal antibody

Catalog Number: 10911-2-AP

7 Publications



Basic Information

Catalog Number:

10911-2-AP

Size:

150ul, Concentration: 400 ug/ml by Nanodrop and 200 ug/ml by Bradford method using BSA as the standard;

Source:

Rabbit

Isotype:

IgG

Immunogen Catalog Number:

AG1344

GenBank Accession Number:

BC000923

GeneID (NCBI):

6817

UNIPROT ID:

P50225

Full Name:

sulfotransferase family, cytosolic, 1A, phenol-preferring, member 1

Calculated MW:

34 kDa

Observed MW:

34 kDa

Purification Method:

Antigen affinity purification

Recommended Dilutions:

WB 1:500-1:2000

IP 0.5-4.0 ug for 1.0-3.0 mg of total protein lysate

IHC 1:200-1:800

IF/ICC 1:200-1:800

Applications

Tested Applications:

WB, IHC, IF/ICC, IP, ELISA

Cited Applications:

WB, IHC

Species Specificity:

human, mouse, rat

Cited Species:

human, mouse, rat

Note-IHC: suggested antigen retrieval with TE buffer pH 9.0; (*) Alternatively, antigen retrieval may be performed with citrate buffer pH 6.0

Positive Controls:

WB: mouse liver tissue, rat liver tissue

IP: mouse liver tissue,

IHC: human ovary cancer tissue,

IF/ICC: HepG2 cells,

Background Information

SULT1A1, also named as ST1A1, P-PST 1, ST1A3, Ts-PST, P-PST 1, STP and STP1, belongs to the sulfotransferase 1 family. It catalyzes the sulfate conjugation of catecholamines, phenolic drugs and neurotransmitters. SULT1A1 is also responsible for the sulfation and activation of minoxidil. It mediates the metabolic activation of carcinogenic N-hydroxyarylamines to DNA binding products and could so participate as modulating factor of cancer risk. SULT1A1 is one of two phenol sulfotransferases with thermostable enzyme activity.

Notable Publications

Author	Pubmed ID	Journal	Application
Shu Xiao-Hong XH	22096581	PLoS One	WB, IHC
Xu Zheng	30116486	Oxid Med Cell Longev	WB
Bin Jia	33391410	J Cancer	IHC, WB

Storage

Storage:

Store at -20°C. Stable for one year after shipment.

Storage Buffer:

PBS with 0.02% sodium azide and 50% glycerol pH 7.3.

Aliquoting is unnecessary for -20°C storage

*** 20ul sizes contain 0.1% BSA

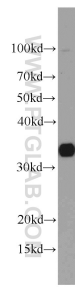
For technical support and original validation data for this product please contact:

T: 1 (888) 4PTGLAB (1-888-478-4522) (toll free in USA), or 1(312) 455-8498 (outside USA)

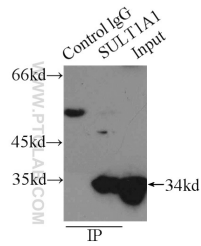
E: proteintech@ptglab.com
W: ptglab.com

This product is exclusively available under Proteintech Group brand and is not available to purchase from any other manufacturer.

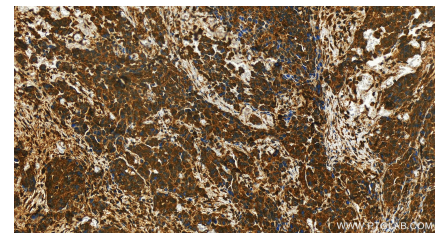
Selected Validation Data



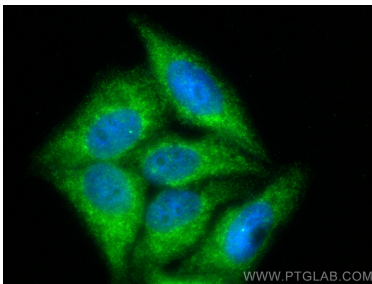
mouse liver tissue were subjected to SDS PAGE followed by western blot with 10911-2-AP (SULT1A1 antibody) at dilution of 1:1000 incubated at room temperature for 1.5 hours.



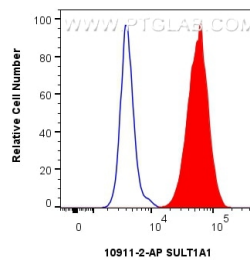
IP result of anti-SULT1A1 (IP:10911-2-AP, 3ug; Detection:10911-2-AP 1:1000) with mouse liver tissue lysate 12500ug.



Immunohistochemical analysis of paraffin-embedded human ovary cancer tissue slide using 10911-2-AP (SULT1A1 antibody) at dilution of 1:400 (under 20x lens). Heat mediated antigen retrieval with Tris-EDTA buffer (pH 9.0).



Immunofluorescent analysis of (-20°C Ethanol) fixed HepG2 cells using SULT1A1 antibody (10911-2-AP) at dilution of 1:400 and CoraLite®488-Conjugated Goat Anti-Rabbit IgG(H+L) (SA00013-2).



1x10⁶ HepG2 cells were intracellularly stained with 0.25 ug SULT1A1 Polyclonal antibody (10911-2-AP) and CoraLite®488-Conjugated Goat Anti-Rabbit IgG(H+L) (SA00013-2)(red), or 0.25 ug Rabbit IgG control Rabbit PolyAb (30000-0-AP) (blue). Cells were fixed with 4% PFA and permeabilized with Flow Cytometry Perm Buffer (PF00011-C).