

For Research Use Only

# SRp20 Polyclonal antibody

Catalog Number: 10916-1-AP

5 Publications



## Basic Information

Catalog Number:

10916-1-AP

Size:

150ul, Concentration: 800 ug/ml by Nanodrop;

Source:

Rabbit

Isotype:

IgG

Immunogen Catalog Number:

AG1341

GenBank Accession Number:

BC000914

GeneID (NCBI):

6428

UNIPROT ID:

P84103

Full Name:

splicing factor, arginine/serine-rich 3

Calculated MW:

20 kDa

Purification Method:

Antigen affinity purification

Recommended Dilutions:

IHC 1:50-1:500

## Applications

Tested Applications:

IHC, ELISA

Cited Applications:

WB, IHC

Species Specificity:

human, mouse

Cited Species:

human, rat

Positive Controls:

IHC : human cervical cancer tissue, mouse testis tissue

**Note-IHC: suggested antigen retrieval with TE buffer pH 9.0; (\*) Alternatively, antigen retrieval may be performed with citrate buffer pH 6.0**

## Background Information

SFRS3, also named as SRSF3 and SRP20, belongs to the splicing factor SR family. It may be involved in RNA processing in relation with cellular proliferation and/or maturation. SFRS3 is one of the cognate factors. It is a proto-oncogene critical for cell proliferation and tumor induction and maintenance. The MW of SFRS3 is 20kd.

## Notable Publications

Author	Pubmed ID	Journal	Application
Miha Modic	31047794	Mol Cell	
Jia Luo	35462226	Pathol Res Pract	WB
Zihua Li	35494088	Front Oncol	IHC

## Storage

Storage:

Store at -20°C. Stable for one year after shipment.

Storage Buffer:

PBS with 0.02% sodium azide and 50% glycerol pH 7.3.

Aliquoting is unnecessary for -20°C storage

\*\*\* 20ul sizes contain 0.1% BSA

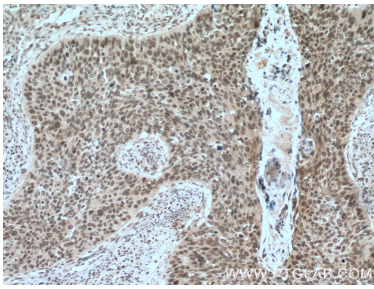
For technical support and original validation data for this product please contact:

T: 1 (888) 4PTGLAB (1-888-478-4522) (toll free in USA), or 1(312) 455-8498 (outside USA)

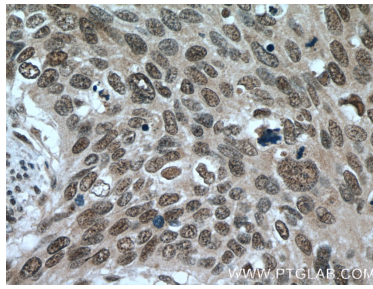
E: [proteintech@ptglab.com](mailto:proteintech@ptglab.com)  
W: [ptglab.com](http://ptglab.com)

This product is exclusively available under Proteintech Group brand and is not available to purchase from any other manufacturer.

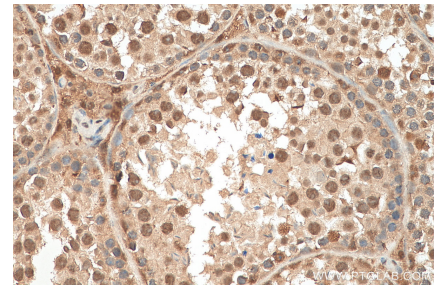
## Selected Validation Data



Immunohistochemical analysis of paraffin-embedded human cervical cancer tissue slide using 10916-1-AP (SRp20 antibody) at dilution of 1:200 (under 10x lens. Heat mediated antigen retrieval with Tris-EDTA buffer (pH 9.0).



Immunohistochemical analysis of paraffin-embedded human cervical cancer tissue slide using 10916-1-AP (SRp20 antibody) at dilution of 1:200 (under 40x lens. Heat mediated antigen retrieval with Tris-EDTA buffer (pH 9.0).



Immunohistochemical analysis of paraffin-embedded mouse testis tissue slide using 10916-1-AP (SRp20 antibody) at dilution of 1:200 (under 40x lens). Heat mediated antigen retrieval with Tris-EDTA buffer (pH 9.0).