

For Research Use Only

CDC27; APC3 Polyclonal antibody

Catalog Number: 10918-1-AP

Featured Product

7 Publications



Basic Information

Catalog Number:

10918-1-AP

Size:

150ul, Concentration: 700 ug/ml by Nanodrop and 387 ug/ml by Bradford method using BSA as the standard;

Source:

Rabbit

Isotype:

IgG

Immunogen Catalog Number:

AG1345

GenBank Accession Number:

BC011656

GeneID (NCBI):

996

UNIPROT ID:

P30260

Full Name:

cell division cycle 27 homolog (S. cerevisiae)

Calculated MW:

92 kDa

Observed MW:

92 kDa

Purification Method:

Antigen affinity purification

Recommended Dilutions:

WB 1:2000-1:16000

IP 0.5-4.0 ug for 1.0-3.0 mg of total protein lysate

IHC 1:50-1:500

IF/ICC 1:20-1:200

Applications

Tested Applications:

WB, IHC, IF/ICC, IP, ELISA

Cited Applications:

WB, IHC, IF, IP

Species Specificity:

human, mouse, rat

Cited Species:

human

Note-IHC: suggested antigen retrieval with TE buffer pH 9.0; (*) Alternatively, antigen retrieval may be performed with citrate buffer pH 6.0

Positive Controls:

WB: Jurkat cells, K-562 cells

IP: K-562 cells,

IHC: human prostate cancer tissue,

IF/ICC: SH-SY5Y cells,

Background Information

CDC27/APC3 is a component of the anaphase-promoting complex (APC/cyclosome), which is composed of eight subunits and highly conserved in eukaryotic cells. The APC/cyclosome complex acts as a cell cycle-regulated E3 ubiquitin ligase which mediates ubiquitination and subsequent degradation of target proteins, and lead to the progression control through mitosis and the G1 phase of the cell cycle.

Notable Publications

Author	Pubmed ID	Journal	Application
Lin Qiu	35242701	Front Oncol	WB, IHC
Yiming He	33931584	Cell Death Dis	WB
Hai-Qi Wu	39984622	Acta Pharmacol Sin	WB, IP, IF

Storage

Storage:

Store at -20°C. Stable for one year after shipment.

Storage Buffer:

PBS with 0.02% sodium azide and 50% glycerol, pH7.3

Aliquoting is unnecessary for -20°C storage

*** 20ul sizes contain 0.1% BSA

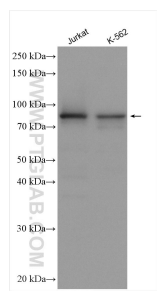
For technical support and original validation data for this product please contact:

T: 1 (888) 4PTGLAB (1-888-478-4522) (toll free in USA), or 1(312) 455-8498 (outside USA)

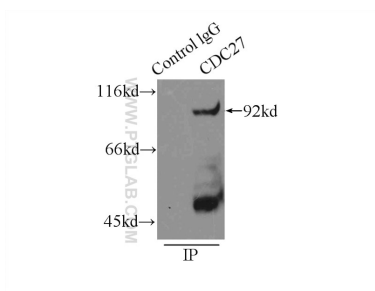
E: proteintech@ptglab.com
W: ptglab.com

This product is exclusively available under Proteintech Group brand and is not available to purchase from any other manufacturer.

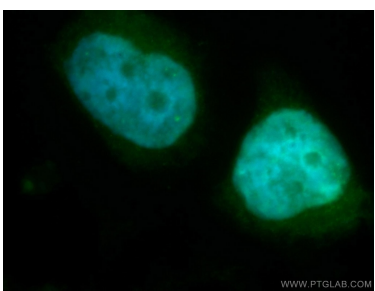
Selected Validation Data



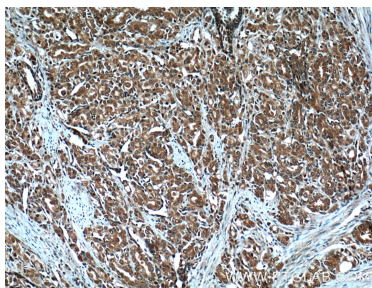
Various lysates were subjected to SDS PAGE followed by western blot with 10918-1-AP (CDC27; APC3 antibody) at dilution of 1:8000 incubated at room temperature for 1.5 hours.



IP result of anti-CDC27; APC3 (IP:10918-1-AP, 3ug; Detection:10918-1-AP 1:600) with K-562 cells lysate 11000ug.



Immunofluorescent analysis of SH-SY5Y cells, using CDC27 antibody 10918-1-AP at 1:50 dilution and FITC-labeled donkey anti-rabbit IgG(green). Blue pseudocolor = DAPI (fluorescent DNA dye).



Immunohistochemical analysis of paraffin-embedded human prostate cancer tissue slide using 10918-1-AP (CDC27; APC3 Antibody) at dilution of 1:200 (under 10x lens). Heat mediated antigen retrieval with Tris-EDTA buffer (pH 9.0).