

For Research Use Only

# CRH/CRF Polyclonal antibody

Catalog Number: 10944-1-AP

33 Publications



## Basic Information

### Catalog Number:

10944-1-AP

### Size:

150ul, Concentration: 1200 µg/ml by Nanodrop and 400 µg/ml by Bradford method using BSA as the standard;

### Source:

Rabbit

### Isotype:

IgG

### Immunogen Catalog Number:

AG1371

### GenBank Accession Number:

BC011031

### GeneID (NCBI):

1392

### UNIPROT ID:

P06850

### Full Name:

CRH/CRF

### Calculated MW:

21 kDa

### Observed MW:

35-38 kDa

### Purification Method:

Antigen affinity purification

### Recommended Dilutions:

WB 1:200-1:1000

IHC 1:50-1:500

## Applications

### Tested Applications:

WB, IF, IHC, ELISA

### Cited Applications:

WB, IHC, IF

### Species Specificity:

human, mouse, rat

### Cited Species:

human, mouse, rat, pig, zebrafish, brandt's voles, microtus ochrogaster

**Note-IHC: suggested antigen retrieval with TE buffer pH 9.0; (\*) Alternatively, antigen retrieval may be performed with citrate buffer pH 6.0**

### Positive Controls:

WB : human brain tissue, rat brain tissue

IHC : human pancreas cancer tissue, mouse brain tissue

## Background Information

CRH, also called CRF or corticotiberin, is a peptide hormone and neurotransmitter involved in the stress response. Marked reduction in this protein has been observed in association with Alzheimer disease. In addition to production in the hypothalamus, this protein is also synthesized in peripheral tissues, such as T lymphocytes and is highly expressed in the placenta. In the placenta it is a marker that determines the length of gestation and the timing of parturition and delivery.

## Notable Publications

Author	Pubmed ID	Journal	Application
Fengmei Wei	36150631	Peptides	IHC
Zhihui Gai	27538655	J Neurol Sci	WB,IF
Hwan-Deuk Kim	36359090	Animals (Basel)	WB

## Storage

### Storage:

Store at -20°C. Stable for one year after shipment.

### Storage Buffer:

PBS with 0.02% sodium azide and 50% glycerol pH 7.3.

Aliquoting is unnecessary for -20°C storage

\*\*\* 20ul sizes contain 0.1% BSA

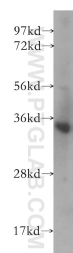
For technical support and original validation data for this product please contact:

T: 1 (888) 4PTGLAB (1-888-478-4522) (toll free in USA), or 1(312) 455-8498 (outside USA)

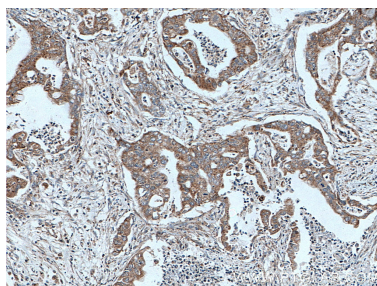
E: proteintech@ptglab.com  
W: ptglab.com

This product is exclusively available under Proteintech Group brand and is not available to purchase from any other manufacturer.

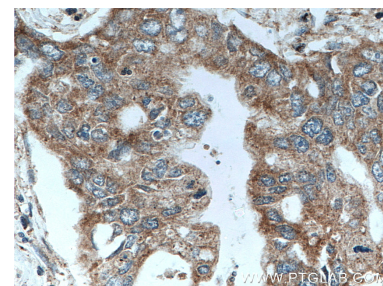
## Selected Validation Data



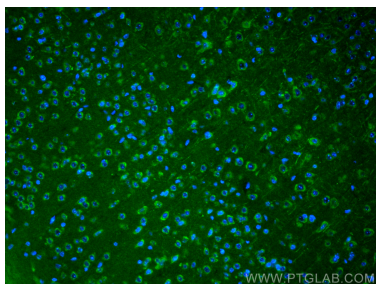
human brain tissue were subjected to SDS PAGE followed by western blot with 10944-1-AP (CRH/CRF antibody) at dilution of 1:400 incubated at room temperature for 1.5 hours.



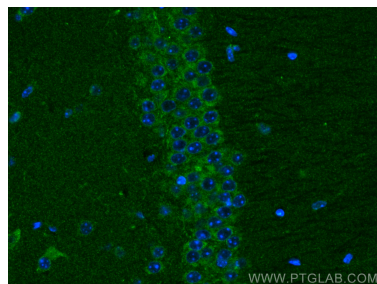
Immunohistochemical analysis of paraffin-embedded human pancreas cancer tissue slide using 10944-1-AP (CRH/CRF antibody) at dilution of 1:200 (under 10x lens. Heat mediated antigen retrieval with Tris-EDTA buffer (pH 9.0).



Immunohistochemical analysis of paraffin-embedded human pancreas cancer tissue slide using 10944-1-AP (CRH/CRF antibody) at dilution of 1:200 (under 40x lens. Heat mediated antigen retrieval with Tris-EDTA buffer (pH 9.0).



Immunofluorescent analysis of (4% PFA) fixed mouse brain tissue using CRH/CRF antibody (10944-1-AP) at dilution of 1:200 and Coralite®488-Conjugated Goat Anti-Rabbit IgG(H+L).



Immunofluorescent analysis of (4% PFA) fixed mouse brain tissue using CRH/CRF antibody (10944-1-AP) at dilution of 1:200 and Coralite®488-Conjugated Goat Anti-Rabbit IgG(H+L).