

For Research Use Only

SUB1 Polyclonal antibody

Catalog Number: 10948-2-AP

Featured Product

4 Publications



Basic Information

Catalog Number:

10948-2-AP

Size:

150ul, Concentration: 850 ug/ml by Nanodrop and 467 ug/ml by Bradford method using BSA as the standard;

Source:

Rabbit

Isotype:

IgG

Immunogen Catalog Number:

AG1390

GenBank Accession Number:

BC009610

GeneID (NCBI):

10923

UNIPROT ID:

P53999

Full Name:

SUB1 homolog (S. cerevisiae)

Calculated MW:

14 kDa

Observed MW:

18-23 kDa

Purification Method:

Antigen affinity purification

Recommended Dilutions:

WB 1:500-1:2000

IHC 1:50-1:500

IF/ICC 1:200-1:800

Applications

Tested Applications:

WB, IHC, IF/ICC, ELISA

Cited Applications:

WB, IHC, IF, ColP

Species Specificity:

human

Cited Species:

human, mouse

Positive Controls:

WB : HeLa cells, A549 cells

IHC : human pancreas cancer tissue,

IF/ICC : HeLa cells,

Note-IHC: suggested antigen retrieval with TE buffer pH 9.0; (*) Alternatively, antigen retrieval may be performed with citrate buffer pH 6.0

Background Information

SUB1 gene encodes activated RNA polymerase II transcriptional coactivator p15, also termed as positive cofactor 4 (PC4) or p14. SUB1 is a sort of general coactivator that functions in assembling and stabilization of transcription complex. It has DNA binding activity and is localized in the nucleus, multiple modification sites of phosphorylation or acetylation may turn it appear slightly shifted molecular weight. Catalog# 10948-2-AP is a rabbit polyclonal antibody raised against full-length human SUB1. This antibody recognizes 14-16 kDa (P14 or P15), 20 kDa (phospho form) and 30 kDa (Dimer form).

Notable Publications

Author	Pubmed ID	Journal	Application
Ting Zhao	39101269	J Am Chem Soc	WB
Hao Wang	38240906	Sci China Life Sci	WB, IHC, IF, ColP
Li Lu L	22807403	J Cell Biochem	WB

Storage

Storage:

Store at -20°C. Stable for one year after shipment.

Storage Buffer:

PBS with 0.02% sodium azide and 50% glycerol pH 7.3.

Aliquoting is unnecessary for -20°C storage

*** 20ul sizes contain 0.1% BSA

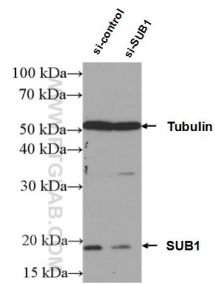
For technical support and original validation data for this product please contact:

T: 1 (888) 4PTGLAB (1-888-478-4522) (toll free in USA), or 1(312) 455-8498 (outside USA)

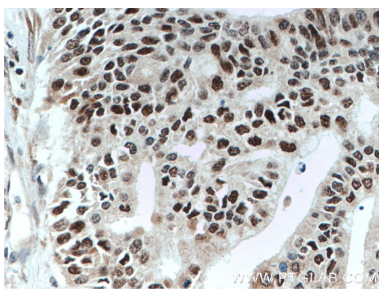
E: proteintech@ptglab.com
W: ptglab.com

This product is exclusively available under Proteintech Group brand and is not available to purchase from any other manufacturer.

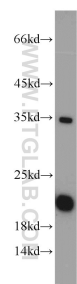
Selected Validation Data



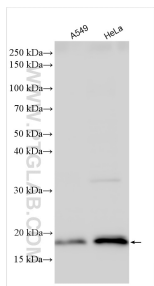
WB result of SUB1 antibody (10948-2-AP; 1:3000; incubated at room temperature for 1.5 hours) with sh-Control and sh-SUB1 transfected A549 cells.



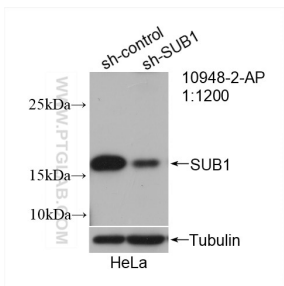
Immunohistochemical analysis of paraffin-embedded human pancreas cancer tissue slide using 10948-2-AP (SUB1 antibody) at dilution of 1:200 (under 40x lens. Heat mediated antigen retrieval with Tris-EDTA buffer (pH 9.0).



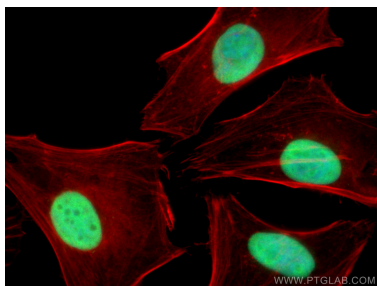
HeLa cells were subjected to SDS PAGE followed by western blot with 10948-2-AP (SUB1 antibody) at dilution of 1:1000 incubated at room temperature for 1.5 hours.



Various lysates were subjected to SDS PAGE followed by western blot with 10948-2-AP (SUB1 antibody) at dilution of 1:2000 incubated at room temperature for 1.5 hours.



WB result of SUB1 antibody (10948-2-AP; 1:1200; incubated at room temperature for 1.5 hours) with sh-Control and sh-SUB1 transfected HeLa cells.



Immunofluorescent analysis of (4% PFA) fixed HeLa cells using SUB1 antibody (10948-2-AP) at dilution of 1:400 and CoraLite®488-Conjugated AffiniPure Goat Anti-Rabbit IgG(H+L), CL594-phalloidin (red).