

For Research Use Only

# CTDSP1 Polyclonal antibody

Catalog Number: 10952-1-AP

Featured Product

4 Publications



## Basic Information

<b>Catalog Number:</b> 10952-1-AP	<b>GenBank Accession Number:</b> BC012977	<b>Purification Method:</b> Antigen affinity purification
<b>Size:</b> 150ul, Concentration: 550 µg/ml by Nanodrop and 300 µg/ml by Bradford method using BSA as the standard;	<b>GeneID (NCBI):</b> 58190	<b>Recommended Dilutions:</b> WB 1:200-1:1000
<b>Source:</b> Rabbit	<b>Full Name:</b> CTD (carboxy-terminal domain, RNA polymerase II, polypeptide A) small phosphatase 1	
<b>Isotype:</b> IgG	<b>Calculated MW:</b> 29 kDa	
<b>Immunogen Catalog Number:</b> AG1410	<b>Observed MW:</b> 29-33 kDa	

## Applications

<b>Tested Applications:</b> WB, ELISA	<b>Positive Controls:</b> WB : mouse liver tissue, mouse heart tissue
<b>Cited Applications:</b> WB	
<b>Species Specificity:</b> human, mouse, rat	
<b>Cited Species:</b> human, mouse	

## Background Information

CTDSP1 also named as NIF3, NLIIF, or SCP1, is a 261 amino acid protein, which contains one FCP1 homology domain. CTDSP1 localizes in the nucleus and colocalizes with RNA polymerase II. CTDSP1 is expressed in non-neuronal tissues. It is highly expressed in skeletal muscle, spleen, lung and placenta. CTDSP1 preferentially catalyzes the dephosphorylation of 'Ser-5' within the tandem 7 residues repeats in the C-terminal domain (CTD) of the largest RNA polymerase II subunit POLR2.

## Notable Publications

Author	Pubmed ID	Journal	Application
Nathaniel Tate Burkholder	30217818	J Biol Chem	WB
Chunming Zhao	36311195	Iran J Basic Med Sci	WB
Jie Du	31907356	Cell Death Dis	WB

## Storage

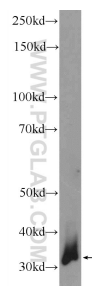
**Storage:**  
Store at -20°C. Stable for one year after shipment.  
**Storage Buffer:**  
PBS with 0.02% sodium azide and 50% glycerol pH 7.3.  
Aliquoting is unnecessary for -20°C storage

\*\*\* 20ul sizes contain 0.1% BSA

For technical support and original validation data for this product please contact:  
T: 1 (888) 4PTGLAB (1-888-478-4522) (toll free in USA), or 1(312) 455-8498 (outside USA)  
E: [proteintech@ptglab.com](mailto:proteintech@ptglab.com)  
W: [ptglab.com](http://ptglab.com)

This product is exclusively available under Proteintech Group brand and is not available to purchase from any other manufacturer.

## Selected Validation Data



mouse liver tissue were subjected to SDS PAGE followed by western blot with 10952-1-AP (CTDSP1 Antibody) at dilution of 1:300 incubated at room temperature for 1.5 hours.