

For Research Use Only

MESDC2 Polyclonal antibody

Catalog Number: 10958-1-AP



Basic Information

Catalog Number: 10958-1-AP	GenBank Accession Number: BC009210	Purification Method: Antigen affinity purification
Size: 150ul , Concentration: 600 ug/ml by Nanodrop and 333 ug/ml by Bradford method using BSA as the standard;	GeneID (NCBI): 23184	Recommended Dilutions: WB 1:500-1:1000 IHC 1:500-1:2000
Source: Rabbit	UNIPROT ID: Q14696	
Isotype: IgG	Full Name: mesoderm development candidate 2	
Immunogen Catalog Number: AG1403	Calculated MW: 26 kDa	
	Observed MW: 26-28 kDa	

Applications

Tested Applications: WB, IHC, ELISA	Positive Controls:
Species Specificity: human, mouse	WB : HEK-293 cells, HeLa cells, NIH/3T3 cells
Note-IHC: suggested antigen retrieval with TE buffer pH 9.0; (*) Alternatively, antigen retrieval may be performed with citrate buffer pH 6.0	IHC : human placenta tissue, human stomach tissue

Storage

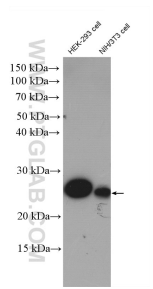
Storage:
Store at -20°C. Stable for one year after shipment.
Storage Buffer:
PBS with 0.02% sodium azide and 50% glycerol pH 7.3.
Aliquoting is unnecessary for -20°C storage

*** 20ul sizes contain 0.1% BSA

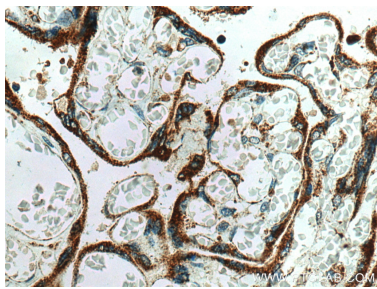
For technical support and original validation data for this product please contact:
T: 1 (888) 4PTGLAB (1-888-478-4522) (toll free in USA), or 1(312) 455-8498 (outside USA)
E: proteintech@ptglab.com
W: ptglab.com

This product is exclusively available under Proteintech Group brand and is not available to purchase from any other manufacturer.

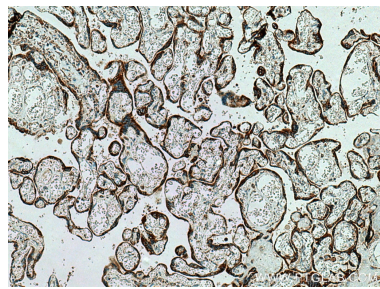
Selected Validation Data



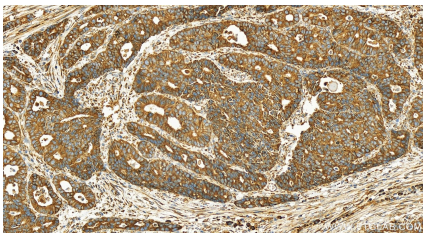
Various lysates were subjected to SDS PAGE followed by western blot with 10958-1-AP (MESDC2 antibody) at dilution of 1:800 incubated at 4 degree celsius over night.



Immunohistochemical analysis of paraffin-embedded human placenta tissue slide using 10958-1-AP (MESDC2 antibody) at dilution of 1:1000 (under 40x lens). Heat mediated antigen retrieval with Tris-EDTA buffer (pH 9.0).



Immunohistochemical analysis of paraffin-embedded human placenta tissue slide using 10958-1-AP (MESDC2 antibody) at dilution of 1:1000 (under 10x lens). Heat mediated antigen retrieval with Tris-EDTA buffer (pH 9.0).



Immunohistochemical analysis of paraffin-embedded normal stomach slide using 10958-1-AP (MESDC2 antibody) at dilution of 1:400 (under 20x lens). Heat mediated antigen retrieval with Tris-EDTA buffer (pH 9.0).