

For Research Use Only

Cofilin Polyclonal antibody

Catalog Number:10960-1-AP

Featured Product

28 Publications



Basic Information

Catalog Number:

10960-1-AP

Size:

150ul , Concentration: 800 ug/ml by Nanodrop and 367 ug/ml by Bradford method using BSA as the standard;

Source:

Rabbit

Isotype:

IgG

Immunogen Catalog Number:

AG1399

GenBank Accession Number:

BC012318

GeneID (NCBI):

1072

UNIPROT ID:

P23528

Full Name:

cofilin 1 (non-muscle)

Calculated MW:

18 kDa

Observed MW:

18-22 kDa

Purification Method:

Antigen affinity purification

Recommended Dilutions:

WB 1:2000-1:12000

IHC 1:600-1:2400

IF/ICC 1:50-1:500

Applications

Tested Applications:

WB, IHC, IF/ICC, ELISA

Cited Applications:

WB, IHC, IF, IP, CoIP

Species Specificity:

human, mouse, rat

Cited Species:

human, mouse, rat, monkey, chicken

Note-IHC: suggested antigen retrieval with TE buffer pH 9.0; (*) Alternatively, antigen retrieval may be performed with citrate buffer pH 6.0

Positive Controls:

WB : MCF-7 cells, NIH/3T3 cells, human skin tissue, human brain tissue, mouse brain tissue, rat brain tissue, NCI-H1299 cells

IHC : human colon tissue, human cervical cancer tissue, human heart tissue, human lung cancer tissue

IF/ICC : NIH/3T3 cells,

Background Information

Cofilin is a ubiquitous actin-binding protein required for the reorganization of actin filaments. It is a member of ADF (actin-depolymerizing factor)/cofilin family that is a key regulator of actin dynamics and essential for cellular motility, cytokinesis, and endocytosis. Cofilin activity is tightly regulated by phosphorylation and dephosphorylation. Phosphorylation at Ser3 can inhibit its activity, also causing translocation from the nucleus to the cytoplasm.

Notable Publications

Author	Pubmed ID	Journal	Application
Zhaoyue Meng	36175399	Nat Commun	WB
Kai Cui	27678468	Asian J Androl	WB
Jie Zan	27396619	Biochem Biophys Res Commun	WB,IF

Storage

Storage:

Store at -20°C. Stable for one year after shipment.

Storage Buffer:

PBS with 0.02% sodium azide and 50% glycerol, pH7.3

Aliquoting is unnecessary for -20°C storage

*** 20ul sizes contain 0.1% BSA

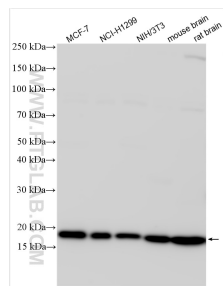
For technical support and original validation data for this product please contact:

T: 1 (888) 4PTGLAB (1-888-478-4522) (toll free in USA), or 1(312) 455-8498 (outside USA)

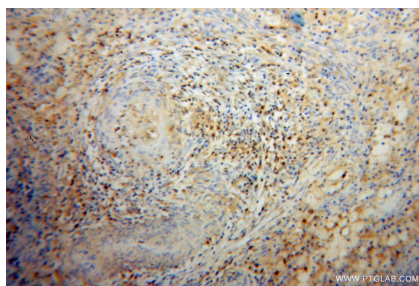
E: proteintech@ptglab.com
W: ptglab.com

This product is exclusively available under Proteintech Group brand and is not available to purchase from any other manufacturer.

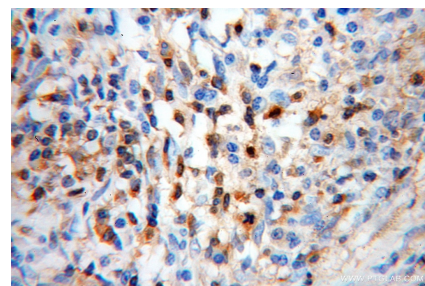
Selected Validation Data



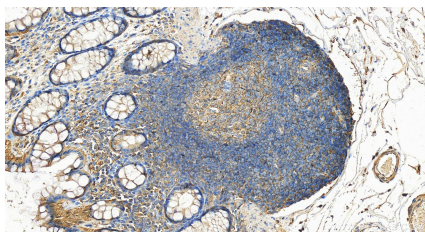
Various lysates were subjected to SDS PAGE followed by western blot with 10960-1-AP (Cofilin antibody) at dilution of 1:6000 incubated at room temperature for 1.5 hours.



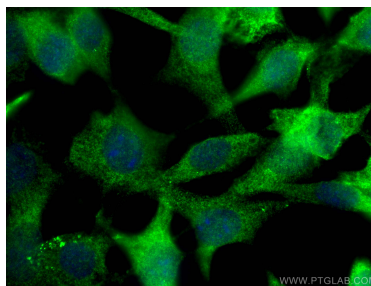
Immunohistochemical analysis of paraffin-embedded human cervical cancer using 10960-1-AP (CFL1 antibody) at dilution of 1:50 (under 10x lens).



Immunohistochemical analysis of paraffin-embedded human cervical cancer using 10960-1-AP (CFL1 antibody) at dilution of 1:50 (under 40x lens).



Immunohistochemical analysis of paraffin-embedded human colon tissue slide using 10960-1-AP (Cofilin antibody) at dilution of 1:1200 (under 20x lens). Heat mediated antigen retrieval with Tris-EDTA buffer (pH 9.0).



Immunofluorescent analysis of (4% PFA) fixed NIH/3T3 cells using Cofilin antibody (10960-1-AP) at dilution of 1:200 and CoraLite®488-Conjugated AffiniPure Goat Anti-Rabbit IgG(H+L).