

For Research Use Only

# FH Polyclonal antibody

Catalog Number: 10966-1-AP **3 Publications**



## Basic Information

<b>Catalog Number:</b> 10966-1-AP	<b>GenBank Accession Number:</b> BC017444	<b>Purification Method:</b> Antigen affinity purification
<b>Size:</b> 150ul , Concentration: 350 ug/ml by Nanodrop and 133 ug/ml by Bradford method using BSA as the standard;	<b>GeneID (NCBI):</b> 2271	<b>Recommended Dilutions:</b> WB 1:500-1:2000 IP 0.5-4.0 ug for 1.0-3.0 mg of total protein lysate IHC 1:20-1:200 IF/ICC 1:10-1:100
<b>Source:</b> Rabbit	<b>UNIPROT ID:</b> P07954	
<b>Isotype:</b> IgG	<b>Full Name:</b> fumarate hydratase	
<b>Immunogen Catalog Number:</b> AG1437	<b>Calculated MW:</b> 55 kDa	
	<b>Observed MW:</b> 45-50 kDa	

## Applications

<b>Tested Applications:</b> WB, IHC, IF/ICC, IP, ELISA	<b>Positive Controls:</b> WB : HeLa cells, A431 cells, HEK-293 cells, HepG2 cells, human liver tissue, L02 cells, mouse liver tissue IP : HepG2 cells, IHC : human prostate cancer tissue, human liver tissue IF/ICC : HepG2 cells,
<b>Cited Applications:</b> WB, IHC, IF	
<b>Species Specificity:</b> human, mouse	
<b>Cited Species:</b> human, mouse	
<b>Note-IHC: suggested antigen retrieval with TE buffer pH 9.0; (*) Alternatively, antigen retrieval may be performed with citrate buffer pH 6.0</b>	

## Background Information

FH(fumarate hydratase) belongs to the class-II fumarase/aspartase family. It is an enzymatic component of the tricarboxylic acid cycle, catalyzing the conversion of fumarate to malate. FH also acts a tumor suppressor functions of FH in sporadic kidney cancer(PMID:21695080). This protein has 2 isoforms produced by alternative initiation.

## Notable Publications

Author	Pubmed ID	Journal	Application
Min Yan	29262542	Oncotarget	WB
Vanida Ann Sema	29700012	Endocr Relat Cancer	IF
Jin Jin	38139831	Pharmaceuticals (Basel)	WB,IHC

## Storage

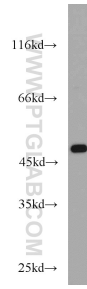
**Storage:**  
Store at -20°C. Stable for one year after shipment.  
**Storage Buffer:**  
PBS with 0.02% sodium azide and 50% glycerol pH 7.3.  
Aliquoting is unnecessary for -20°C storage

\*\*\* 20ul sizes contain 0.1% BSA

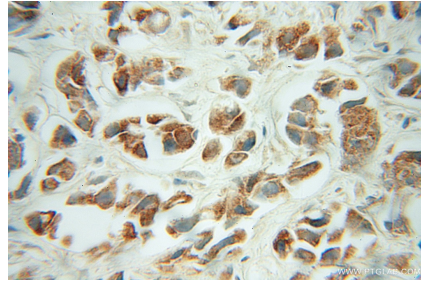
For technical support and original validation data for this product please contact:  
T: 1 (888) 4PTGLAB (1-888-478-4522) (toll free in USA), or 1(312) 455-8498 (outside USA) E: proteintech@ptglab.com W: ptglab.com

This product is exclusively available under Proteintech Group brand and is not available to purchase from any other manufacturer.

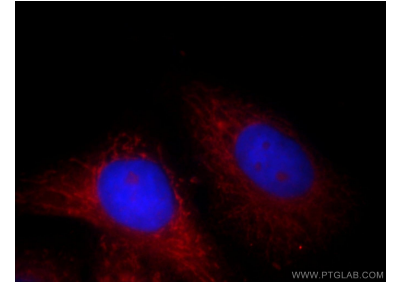
## Selected Validation Data



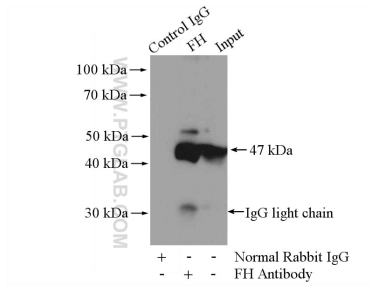
HeLa cells were subjected to SDS PAGE followed by western blot with 10966-1-AP (FH antibody) at dilution of 1:1000 incubated at room temperature for 1.5 hours.



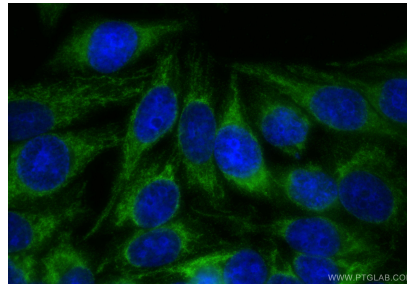
Immunohistochemical analysis of paraffin-embedded human prostate cancer using 10966-1-AP (FH antibody) at dilution of 1:50 (under 40x lens).



Immunofluorescent analysis of HepG2 cells, using FH antibody 10966-1-AP at 1:25 dilution and Rhodamine-labeled goat anti-rabbit IgG (red). Blue pseudocolor = DAPI (fluorescent DNA dye).



IP result of anti-FH (IP:10966-1-AP, 4ug; Detection:10966-1-AP 1:1000) with HepG2 cells lysate 2400ug.



Immunofluorescent analysis of (-20°C Ethanol) fixed HepG2 cells using FH antibody (10966-1-AP) at dilution of 1:200 and CoraLite®488-Conjugated Goat Anti-Rabbit IgG(H+L) (SA00013-2).