

For Research Use Only

MAB21L2 Polyclonal antibody

Catalog Number: 10971-1-AP **1 Publications**



Basic Information

Catalog Number: 10971-1-AP	GenBank Accession Number: BC009983	Purification Method: Antigen affinity purification
Size: 150ul , Concentration: 247 µg/ml by Bradford method using BSA as the standard;	GeneID (NCBI): 10586	Recommended Dilutions: WB 1:200-1:1000
Source: Rabbit	Full Name: mab-21-like 2 (C. elegans)	
Isotype: IgG	Calculated MW: 41 kDa	
Immunogen Catalog Number: AG1423	Observed MW: 41 kDa	

Applications

Tested Applications: WB,ELISA	Positive Controls: WB : mouse brain tissue,
Cited Applications: WB	
Species Specificity: human, mouse, rat	
Cited Species: human	

Background Information

Mab-21 gene has been identified as a critical component required for sensory organ identity establishment in *Caenorhabditis elegans*. Mab21l1 and Mab21l2 paralogs have widespread and dynamic expression patterns during vertebrate development. Depletion of Mab21l1 and Mab21l2 messages in mouse embryo arrests axial turning, and impairs notochord and neural tube differentiation. Human MAB21L2 gene encodes mab-21-like 2 protein belonging to the mab-21 family. The Mab21l2-deficient mice have defects in eye and body wall formation, indicating that Mab21l2 plays crucial roles in retina and in ventral body wall formation. MAB21L2 plays a crucial role in both heart and liver development during mouse embryogenesis. This antibody is supposed to recognize both MAB21L2 and its homolog MAB21L1.

Notable Publications

Author	Pubmed ID	Journal	Application
Nicklas Pihlstrøm	33808059	Cancers (Basel)	WB

Storage

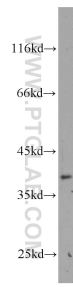
Storage:
Store at -20°C. Stable for one year after shipment.
Storage Buffer:
PBS with 0.02% sodium azide and 50% glycerol pH 7.3.
Aliquoting is unnecessary for -20°C storage

*** 20ul sizes contain 0.1% BSA

For technical support and original validation data for this product please contact:
T: 1 (888) 4PTGLAB (1-888-478-4522) (toll free in USA), or 1(312) 455-8498 (outside USA)
E: proteintech@ptglab.com
W: ptglab.com

This product is exclusively available under Proteintech Group brand and is not available to purchase from any other manufacturer.

Selected Validation Data



mouse brain tissue were subjected to SDS PAGE followed by western blot with 10971-1-AP (MAB21L2 antibody) at dilution of 1:200 incubated at room temperature for 1.5 hours.