

For Research Use Only

KLRG1 Polyclonal antibody

Catalog Number: 10974-1-AP

2 Publications



Basic Information

Catalog Number:

10974-1-AP

Size:

150ul, Concentration: 300 ug/ml by Nanodrop and 233 ug/ml by Bradford method using BSA as the standard;

Source:

Rabbit

Isotype:

IgG

Immunogen Catalog Number:

AG1407

GenBank Accession Number:

BC012621

GeneID (NCBI):

10219

UNIPROT ID:

Q96E93

Full Name:

killer cell lectin-like receptor subfamily G, member 1

Calculated MW:

22 kDa

Observed MW:

60-70 kDa

Purification Method:

Antigen affinity purification

Recommended Dilutions:

WB 1:200-1:1000

Applications

Tested Applications:

WB, ELISA

Cited Applications:

IF

Species Specificity:

human

Cited Species:

human

Positive Controls:

WB: Jurkat cells, Raji cells, human peripheral blood leukocyte, NK-92 cells

Background Information

KLRG1 (killer cell lectin-like receptor subfamily G, member 1) is a C-type lectin inhibitory receptor that contains an immunoreceptor tyrosine-based inhibitory motif (ITIM) in its cytoplasmic domain. KLRG1 is expressed by subsets of NK and T cells, existing both as a monomer and as a disulfide-linked homodimer (PMID: 10741410; 19604491). It is considered to be a cell differentiation marker for NK and T cells and is strongly induced by viral and other infections (PMID: 20373518). Through interactions with members of the cadherin family, KLRG1 plays an inhibitory role in NK- and T-cell function (PMID: 19009530; 20373518). Because of the glycosylation and disulfide bonds of the KLRG1 proteins, the observed molecular weights are typically 30-38 kDa (PMID: 17404256).

Notable Publications

Author	Pubmed ID	Journal	Application
Steven A Greenberg	31326977	Brain	
Sinja Vogt	37280376	J Neurol	IF

Storage

Storage:

Store at -20°C. Stable for one year after shipment.

Storage Buffer:

PBS with 0.02% sodium azide and 50% glycerol pH 7.3.

Aliquoting is unnecessary for -20°C storage

*** 20ul sizes contain 0.1% BSA

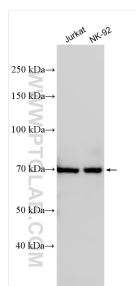
For technical support and original validation data for this product please contact:

T: 1 (888) 4PTGLAB (1-888-478-4522) (toll free in USA), or 1(312) 455-8498 (outside USA)

E: proteintech@ptglab.com
W: ptglab.com

This product is exclusively available under Proteintech Group brand and is not available to purchase from any other manufacturer.

Selected Validation Data



Various lysates were subjected to SDS PAGE followed by western blot with 10974-1-AP (KLRG1 antibody) at dilution of 1:300 incubated at room temperature for 1.5 hours.