

For Research Use Only

CUL2 Polyclonal antibody

Catalog Number:10981-2-AP

Featured Product

11 Publications



Basic Information

Catalog Number:

10981-2-AP

Size:

150ul , Concentration: 500 ug/ml by Nanodrop;

Source:

Rabbit

Isotype:

IgG

Immunogen Catalog Number:

AG1434

GenBank Accession Number:

BC009591

GeneID (NCBI):

8453

UNIPROT ID:

Q13617

Full Name:

cullin 2

Calculated MW:

87 kDa

Observed MW:

87 kDa

Purification Method:

Antigen affinity purification

Recommended Dilutions:

WB 1:1000-1:6000

IP 0.5-4.0 ug for 1.0-3.0 mg of total protein lysate

IHC 1:50-1:500

Applications

Tested Applications:

WB, IP, IHC, ELISA

Cited Applications:

WB, ColP

Species Specificity:

human

Cited Species:

human

Note-IHC: suggested antigen retrieval with TE buffer pH 9.0; (*) Alternatively, antigen retrieval may be performed with citrate buffer pH 6.0

Positive Controls:

WB : HEK-293 cells, PC-3 cells, HeLa cells, HepG2 cells

IP : HeLa cells,

IHC : human prostate cancer tissue,

Background Information

The cullin family proteins are scaffold proteins for the Ring finger type E3 ligases, participating in the proteolysis through the ubiquitin-proteasome pathway. Humans express seven cullin proteins: CUL1-3, CUL4A, CUL4B, CUL5, and CUL7. Each cullin protein can form an E3 ligase similar to the prototype Ring-type E3 ligase Skp1-CUL1-F-box complex. The Cullin-RING-finger type E3 ligases are important regulators in early embryonic development, as highlighted by genetic studies demonstrating that knock-out of CUL1, CUL3, or CUL4A in mice results in early embryonic lethality.

Notable Publications

Author	Pubmed ID	Journal	Application
Wen Li	28977802	Cell Physiol Biochem	WB
Tomoaki Nagai	30404837	J Cell Sci	WB
Pingzhao Zhang	34743205	Cell Death Differ	WB

Storage

Storage:

Store at -20°C. Stable for one year after shipment.

Storage Buffer:

PBS with 0.02% sodium azide and 50% glycerol pH 7.3.

Aliquoting is unnecessary for -20°C storage

*** 20ul sizes contain 0.1% BSA

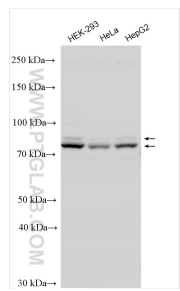
For technical support and original validation data for this product please contact:

T: 1 (888) 4PTGLAB (1-888-478-4522) (toll free in USA), or 1(312) 455-8498 (outside USA)

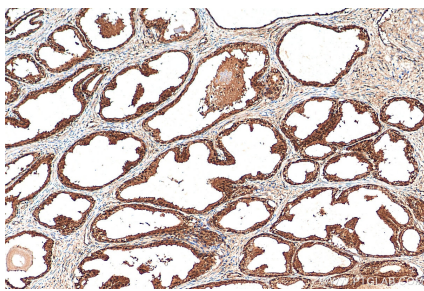
E: proteintech@ptglab.com
W: ptglab.com

This product is exclusively available under Proteintech Group brand and is not available to purchase from any other manufacturer.

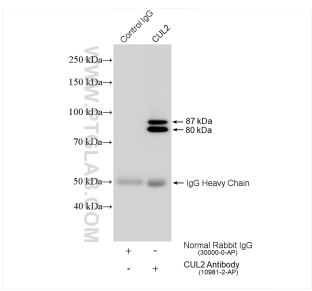
Selected Validation Data



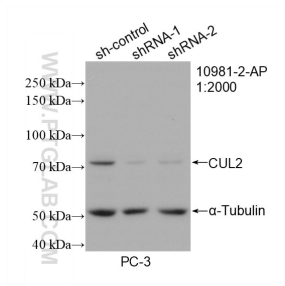
Various lysates were subjected to SDS PAGE followed by western blot with 10981-2-AP (CUL2 antibody) at dilution of 1:3000 incubated at room temperature for 1.5 hours.



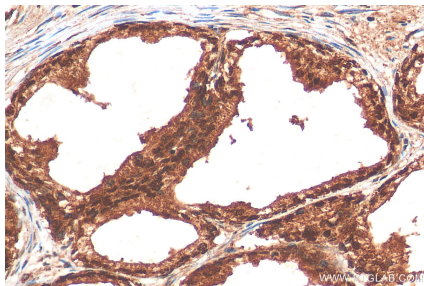
Immunohistochemical analysis of paraffin-embedded human prostate cancer tissue slide using 10981-2-AP (CUL2 antibody) at dilution of 1:200 (under 10x lens). Heat mediated antigen retrieval with Tris-EDTA buffer (pH 9.0).



IP result of anti-CUL2 (IP:10981-2-AP, 4ug; Detection:10981-2-AP 1:2000) with HeLa cells lysate 1360 ug.



WB result of CUL2 antibody (10981-2-AP; 1:2000; incubated at room temperature for 1.5 hours) with sh-Control and sh-CUL2 transfected PC-3 cells.



Immunohistochemical analysis of paraffin-embedded human prostate cancer tissue slide using 10981-2-AP (CUL2 antibody) at dilution of 1:200 (under 40x lens). Heat mediated antigen retrieval with Tris-EDTA buffer (pH 9.0).