

For Research Use Only

NCLN Polyclonal antibody

Catalog Number: 10985-1-AP



Basic Information

Catalog Number:

10985-1-AP

Size:

150ul, Concentration: 500 ug/ml by Nanodrop and 300 ug/ml by Bradford method using BSA as the standard;

Source:

Rabbit

Isotype:

IgG

Immunogen Catalog Number:

AG1430

GenBank Accession Number:

BC013283

GeneID (NCBI):

56926

UNIPROT ID:

Q969V3

Full Name:

nicalin homolog (zebrafish)

Calculated MW:

60 kDa

Observed MW:

60-64 kDa

Purification Method:

Antigen affinity purification

Recommended Dilutions:

WB 1:500-1:1000

IHC 1:50-1:500

Applications

Tested Applications:

WB, IHC, ELISA

Species Specificity:

human, mouse, rat

Note-IHC: suggested antigen retrieval with TE buffer pH 9.0; (*) Alternatively, antigen retrieval may be performed with citrate buffer pH 6.0

Positive Controls:

WB : mouse pancreas tissue,

IHC : human stomach cancer tissue, human pancreas cancer tissue

Background Information

Nicalin, also named as NCLN, is a key component of a protein complex that antagonizes Nodal signaling, which in vertebrates is involved in induction of the mesoderm and endoderm. Nicalin is highest expression in pancreas and skeletal muscle, with somewhat lower expression in heart and very low expression in all other tissues examined. Endogenous nicalin has an apparent molecular mass of 60 kDa. Nicalin was also detected in a 500- to 550-kDa complex containing NOMO2.

Storage

Storage:

Store at -20°C. Stable for one year after shipment.

Storage Buffer:

PBS with 0.02% sodium azide and 50% glycerol pH 7.3.

Aliquoting is unnecessary for -20°C storage

*** 20ul sizes contain 0.1% BSA

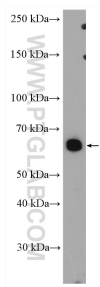
For technical support and original validation data for this product please contact:

T: 1 (888) 4PTGLAB (1-888-478-4522) (toll free in USA), or 1(312) 455-8498 (outside USA)

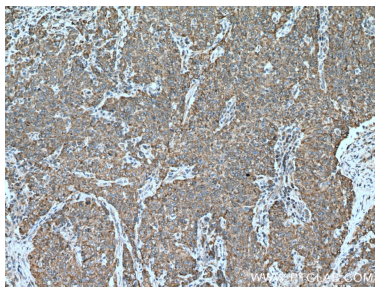
E: proteintech@ptglab.com
W: ptglab.com

This product is exclusively available under Proteintech Group brand and is not available to purchase from any other manufacturer.

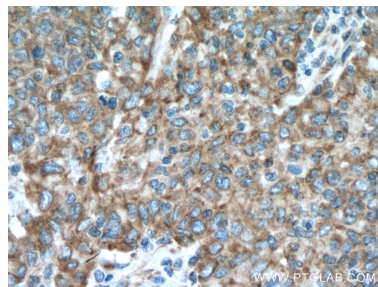
Selected Validation Data



mouse pancreas tissue were subjected to SDS PAGE followed by western blot with 10985-1-AP (NCLN antibody) at dilution of 1:1000 incubated at room temperature for 1.5 hours.



Immunohistochemical analysis of paraffin-embedded human stomach cancer tissue slide using 10985-1-AP (NCLN antibody) at dilution of 1:200 (under 10x lens). Heat mediated antigen retrieval with Tris-EDTA buffer (pH 9.0).



Immunohistochemical analysis of paraffin-embedded human stomach cancer tissue slide using 10985-1-AP (NCLN antibody) at dilution of 1:200 (under 40x lens). Heat mediated antigen retrieval with Tris-EDTA buffer (pH 9.0).