

For Research Use Only

FHL1 Polyclonal antibody

Catalog Number:10991-1-AP

Featured Product

32 Publications



Basic Information

Catalog Number:

10991-1-AP

Size:

150ul , Concentration: 450 ug/ml by Nanodrop and 333 ug/ml by Bradford method using BSA as the standard;

Source:

Rabbit

Isotype:

IgG

Immunogen Catalog Number:

AG1448

GenBank Accession Number:

BC010998

GeneID (NCBI):

2273

UNIPROT ID:

Q13642

Full Name:

four and a half LIM domains 1

Calculated MW:

32 kDa

Observed MW:

32 kDa

Purification Method:

Antigen affinity purification

Recommended Dilutions:

WB 1:1000-1:8000

IP 0.5-4.0 ug for 1.0-3.0 mg of total protein lysate

IHC 1:20-1:200

Applications

Tested Applications:

WB, IHC, IP, ELISA

Cited Applications:

WB, IHC, IF, IP, CoIP, ChIP

Species Specificity:

human, mouse, rat, zebrafish

Cited Species:

human, mouse, rat, zebrafish

Note-IHC: suggested antigen retrieval with TE buffer pH 9.0; (*) Alternatively, antigen retrieval may be performed with citrate buffer pH 6.0

Positive Controls:

WB : mouse skeletal muscle tissue, human brain tissue, mouse colon tissue, rat skeletal muscle tissue

IP : mouse skeletal muscle tissue,

IHC : human ovary tumor tissue,

Background Information

Four-and-a-half LIM domains 1 (FHL1), a member of the FHL protein family, which composed of FHL 1, 2, 3, 4 and ACT (activator of CREM), and characterized by an N-terminal half LIM domain followed by four complete LIM domains. FHL1 may contribute to sarcomere synthesis, assembly and biomechanical stress sensing. FHL1 is also a methylation-silenced tumor-suppressor gene on chromosome X in gastrointestinal cancers, which contributes to the formation of an epigenetic field for cancerization. FHL1(10991-1-AP) is highly expressed in skeletal muscle and to a lesser extent in heart, placenta, ovary, prostate, testis, small intestine, colon and spleen. This is a rabbit polyanitbody raised against full length of human FHL1.

Notable Publications

Author	Pubmed ID	Journal	Application
Yu Wang	25272045	PLoS One	WB
San-Zhong Li	32382330	Oncol Lett	WB
Jun-Long Zhao	24657059	Gene	WB

Storage

Storage:

Store at -20°C. Stable for one year after shipment.

Storage Buffer:

PBS with 0.02% sodium azide and 50% glycerol, pH7.3

Aliquoting is unnecessary for -20°C storage

*** 20ul sizes contain 0.1% BSA

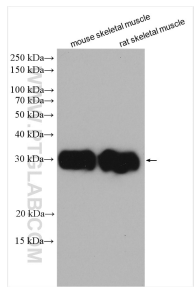
For technical support and original validation data for this product please contact:

T: 1 (888) 4PTGLAB (1-888-478-4522) (toll free in USA), or 1(312) 455-8498 (outside USA)

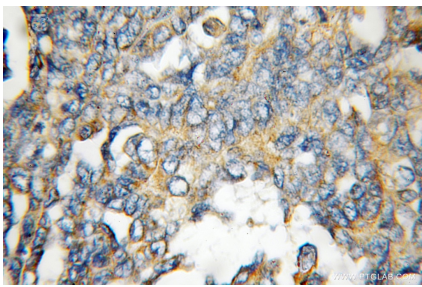
E: proteintech@ptglab.com
W: ptglab.com

This product is exclusively available under Proteintech Group brand and is not available to purchase from any other manufacturer.

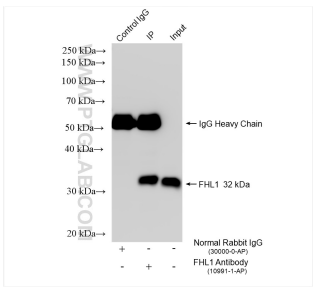
Selected Validation Data



Various lysates were subjected to SDS PAGE followed by western blot with 10991-1-AP (FHL1 antibody) at dilution of 1:4000 incubated at room temperature for 1.5 hours.



Immunohistochemical analysis of paraffin-embedded human ovary tumor using 10991-1-AP (FHL1 antibody) at dilution of 1:100 (under 10x lens).



IP result of anti-FHL1 (IP:10991-1-AP, 4ug; Detection:10991-1-AP 1:8000) with mouse skeletal muscle tissue lysate 4000 ug.