

For Research Use Only

Cytochrome c Polyclonal antibody

Catalog Number: 10993-1-AP

Featured Product

575 Publications



Basic Information

Catalog Number: 10993-1-AP	GenBank Accession Number: BC009578	Purification Method: Antigen affinity purification
Size: 150ul , Concentration: 800 ug/ml by Nanodrop;	GeneID (NCBI): 54205	Recommended Dilutions: WB 1:1000-1:8000 IHC 1:500-1:2000 IF-P 1:50-1:500
Source: Rabbit	UNIPROT ID: P99999	
Isotype: IgG	Full Name: cytochrome c, somatic	
Immunogen Catalog Number: AG1455	Calculated MW: 12 kDa	
	Observed MW: 12-15 kDa	

Applications

Tested Applications:
WB, IHC, IF-P, FC (Intra), ELISA

Cited Applications:
WB, IHC, IF

Species Specificity:
human, mouse, rat

Cited Species:
human, mouse, rat, pig, monkey, chicken, hamster, sheep, goat, hippospongia

Note-IHC: suggested antigen retrieval with TE buffer pH 9.0; (*) Alternatively, antigen retrieval may be performed with citrate buffer pH 6.0

Positive Controls:

WB : HeLa cells, mouse skeletal muscle tissue, rat skeletal muscle tissue, NIH/3T3 cells, rat liver tissue, HEK-293 cells, HepG2 cells, C2C12 cells, Jurkat cells, mouse kidney tissue, rat kidney tissue

IHC : human liver tissue, human breast cancer tissue, human colon cancer tissue, mouse brain tissue

IF-P : mouse eye tissue,

Background Information

Cytochrome c is a 12-15 kDa electron transporting protein located in the inner mitochondrial membrane. As a part of respiratory chain, cytochrome c plays a critical role in the process of oxidative phosphorylation and ATP producing. Besides, cytochrome c also gets implicated in apoptosis process. Upon apoptotic stimulation, cytochrome c can be released from mitochondria into cytoplasm, which is required for caspase-3 activation and the occurrence of apoptosis.

Notable Publications

Author	Pubmed ID	Journal	Application
Qingxi Zhang	33117129	Front Mol Neurosci	WB
Yiqun Ji	33152945	Biomed Pharmacother	WB
Hui Wang	36243659	Hepatobiliary Pancreat Dis Int	WB

Storage

Storage:
Store at -20°C. Stable for one year after shipment.
Storage Buffer:
PBS with 0.02% sodium azide and 50% glycerol, pH7.3
Aliquoting is unnecessary for -20°C storage

*** 20ul sizes contain 0.1% BSA

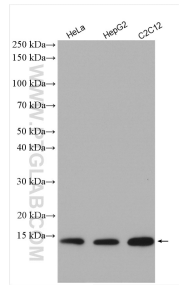
For technical support and original validation data for this product please contact:

T: 1 (888) 4PTGLAB (1-888-478-4522) (toll free in USA), or 1(312) 455-8498 (outside USA)

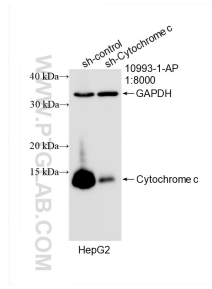
E: proteintech@ptglab.com
W: ptglab.com

This product is exclusively available under Proteintech Group brand and is not available to purchase from any other manufacturer.

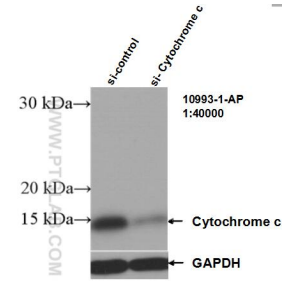
Selected Validation Data



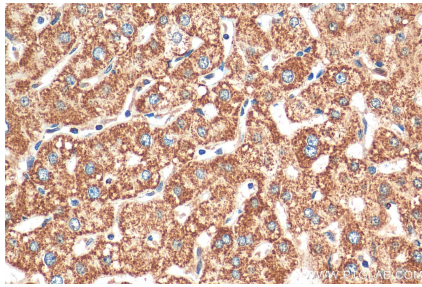
Various lysates were subjected to SDS PAGE followed by western blot with 10993-1-AP (Cytochrome c antibody) at dilution of 1:4000 incubated at room temperature for 1.5 hours.



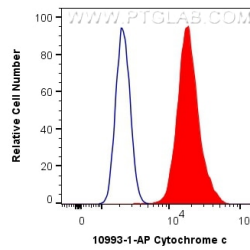
WB result of Cytochrome c antibody (10993-1-AP; 1:8000; incubated at room temperature for 1.5 hours) with sh-Control and sh-Cytochrome c transfected HepG2 cells.



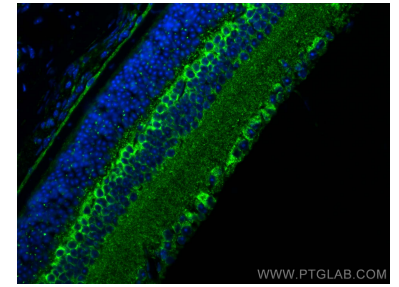
WB result of Cytochrome c antibody (10993-1-AP; 1:40000; incubated at room temperature for 1.5 hours) with sh-Control and sh-Cytochrome c transfected HEK-293 cells.



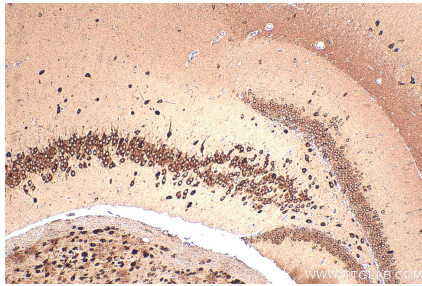
Immunohistochemical analysis of paraffin-embedded human liver tissue slide using 10993-1-AP (Cytochrome c antibody) at dilution of 1:1000 (under 40x lens). Heat mediated antigen retrieval with Tris-EDTA buffer (pH 9.0).



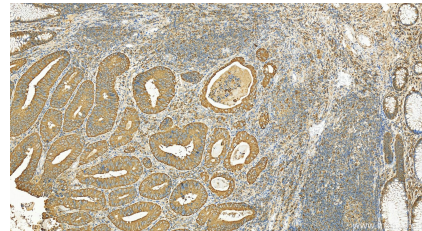
1X10⁶ HepG2 cells were intracellularly stained with 0.4 ug Anti-Human Cytochrome c (10993-1-AP) and CoraLite®488-Conjugated AffiniPure Goat Anti-Rabbit IgG(H+L) at dilution 1:1000 (red), or 0.4 ug Isotype Control. Cells were fixed with 4% PFA and permeabilized with Flow Cytometry Perm Buffer (PF00011-C).



Immunofluorescent analysis of (4% PFA) fixed paraffin-embedded mouse eye tissue using Cytochrome c antibody (10993-1-AP) at dilution of 1:200 and CoraLite®488-Conjugated AffiniPure Goat Anti-Rabbit IgG(H+L) (SA00013-2). Heat mediated antigen retrieval with Tris-EDTA buffer (pH 9.0).



Immunohistochemical analysis of paraffin-embedded mouse brain tissue slide using 10993-1-AP (Cytochrome c antibody) at dilution of 1:1000 (under 10x lens). Heat mediated antigen retrieval with Tris-EDTA buffer (pH 9.0).



Immunohistochemical analysis of paraffin-embedded human colon cancer tissue slide using 10993-1-AP (Cytochrome c antibody) at dilution of 1:3000 (under 20x lens). Heat mediated antigen retrieval with Tris-EDTA buffer (pH 9.0).