

For Research Use Only

POLG2 Polyclonal antibody

Catalog Number: 10997-2-AP

Featured Product

7 Publications



Basic Information

Catalog Number:

10997-2-AP

Size:

150ul, Concentration: 500 ug/ml by Nanodrop;

Source:

Rabbit

Isotype:

IgG

Immunogen Catalog Number:

AG1424

GenBank Accession Number:

BC009194

GeneID (NCBI):

11232

UNIPROT ID:

Q9UHN1

Full Name:

polymerase (DNA directed), gamma 2, accessory subunit

Calculated MW:

55 kDa

Observed MW:

55 kDa

Purification Method:

Antigen affinity purification

Recommended Dilutions:

WB 1:500-1:2000

IHC 1:20-1:200

IF/ICC 1:50-1:500

Applications

Tested Applications:

WB, IHC, IF/ICC, ELISA

Cited Applications:

WB, IHC, IF

Species Specificity:

human, mouse, rat

Cited Species:

human, mouse

Note-IHC: suggested antigen retrieval with TE buffer pH 9.0; (*) Alternatively, antigen retrieval may be performed with citrate buffer pH 6.0

Positive Controls:

WB : COLO 320 cells, mouse colon tissue, HeLa cells

IHC : human colon cancer tissue,

IF/ICC : U-251 cells,

Background Information

POLG2(DNA polymerase subunit gamma-2, mitochondrial) can stimulate the polymerase and exonuclease activities. Defects in POLG2 are the cause of progressive external ophthalmoplegia with mitochondrial DNA deletions autosomal dominant type 4 (PEOA4) [MIM:610131]. Western blot result suggested that the POLG2 expressed in human fetal kidney and U-251 MG cell lines with a single band of 55kd.

Notable Publications

Author	Pubmed ID	Journal	Application
Teppei Inatomi	34744028	Biochim Biophys Acta Mol Cell Res	WB
Yura Do	32470614	Mitochondrion	WB
Xinbin Zhao	28397817	Sci Rep	WB

Storage

Storage:

Store at -20°C. Stable for one year after shipment.

Storage Buffer:

PBS with 0.02% sodium azide and 50% glycerol pH 7.3.

Aliquoting is unnecessary for -20°C storage

*** 20ul sizes contain 0.1% BSA

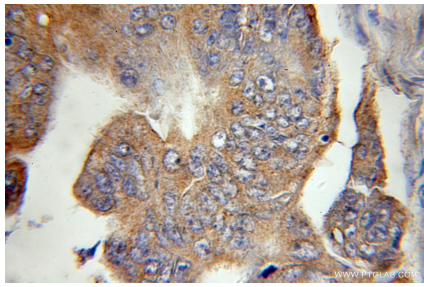
For technical support and original validation data for this product please contact:

T: 1 (888) 4PTGLAB (1-888-478-4522) (toll free in USA), or 1(312) 455-8498 (outside USA)

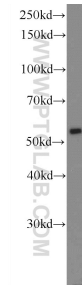
E: proteintech@ptglab.com
W: ptglab.com

This product is exclusively available under Proteintech Group brand and is not available to purchase from any other manufacturer.

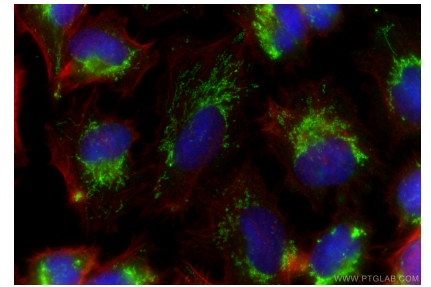
Selected Validation Data



Immunohistochemical analysis of paraffin-embedded human colon cancer using 10997-2-AP (POLG2 antibody) at dilution of 1:100 (under 10x lens).



COLO 320 cells were subjected to SDS PAGE followed by western blot with 10997-2-AP (POLG2 Antibody) at dilution of 1:1000 incubated at room temperature for 1.5 hours.



Immunofluorescent analysis of (-20°C Ethanol) fixed U-251 cells using POLG2 antibody (10997-2-AP) at dilution of 1:200 and CoraLite@488-Conjugated Goat Anti-Rabbit IgG(H+L) (SA00013-2), CL594-Phalloidin (red).