

For Research Use Only

# PANK2 Polyclonal antibody

Catalog Number: 11001-1-AP



## Basic Information

<b>Catalog Number:</b> 11001-1-AP	<b>GenBank Accession Number:</b> BC009421	<b>Purification Method:</b> Antigen affinity purification
<b>Size:</b> 150ul , Concentration: 650 µg/ml by Nanodrop and 400 µg/ml by Bradford method using BSA as the standard;	<b>GeneID (NCBI):</b> 80025	<b>Recommended Dilutions:</b> WB 1:1000-1:4000 IP 0.5-4.0 ug for IP and 1:500-1:1000 for WB
<b>Source:</b> Rabbit	<b>Full Name:</b> pantothenate kinase 2	<b>IHC 1:10-1:100</b>
<b>Isotype:</b> IgG	<b>Calculated MW:</b> 63 kDa	<b>IF 1:10-1:100</b>
<b>Immunogen Catalog Number:</b> AG1413	<b>Observed MW:</b> 59 kDa, 48 kDa	

## Applications

<b>Tested Applications:</b> IF, IHC, IP, WB, ELISA	<b>Positive Controls:</b>
<b>Species Specificity:</b> human, mouse, rat	<b>WB :</b> K-562 cells, human brain tissue, MCF-7 cells, mouse brain tissue, mouse testis tissue, rat brain tissue, rat testis tissue
<b>Note-IHC: suggested antigen retrieval with TE buffer pH 9.0; (*) Alternatively, antigen retrieval may be performed with citrate buffer pH 6.0</b>	<b>IP :</b> mouse brain tissue,
	<b>IHC :</b> human lung cancer tissue, human liver tissue
	<b>IF :</b> HepG2 cells,

## Background Information

Pantothenate kinase 2 (PANK2) is an essential regulatory enzyme in coenzyme A biosynthesis. PANK2 mutations cause pantothenate kinase-associated neurodegeneration (PKAN), which leads to pigmentary retinopathy, progressive dystonia and other abnormalities (PMID:20603201). Pank2 protein is localized to mitochondria of neurons in human brain, distinguishing it from other pantothenate kinases that do not possess mitochondrial-targeting sequences (PMID:15659606). It has 4 isoforms produced by alternative splicing and alternative initiation.

## Storage

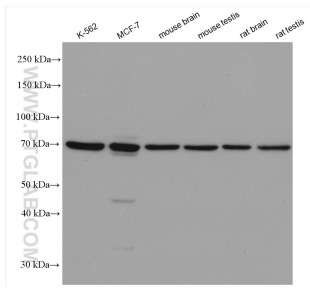
**Storage:**  
Store at -20°C. Stable for one year after shipment.  
**Storage Buffer:**  
PBS with 0.02% sodium azide and 50% glycerol pH 7.3.  
**Aliquoting is unnecessary for -20°C storage**

\*\*\* 20ul sizes contain 0.1% BSA

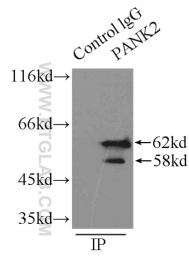
For technical support and original validation data for this product please contact:  
T: 1 (888) 4PTGLAB (1-888-478-4522) (toll free in USA), or 1(312) 455-8498 (outside USA)  
E: proteintech@ptglab.com  
W: ptglab.com

This product is exclusively available under Proteintech Group brand and is not available to purchase from any other manufacturer.

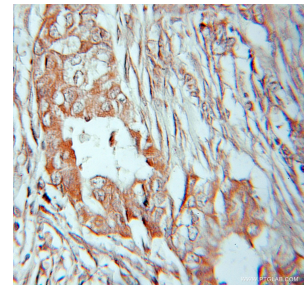
## Selected Validation Data



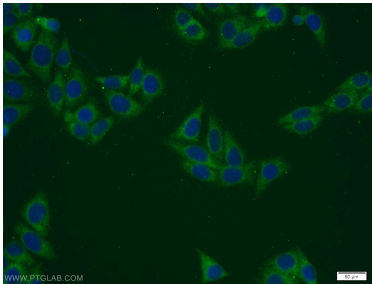
Various lysates were subjected to SDS PAGE followed by western blot with 11001-1-AP (PANK2 antibody) at dilution of 1:2000 incubated at room temperature for 1.5 hours.



IP Result of anti-PANK2 (IP:11001-1-AP, 3ug; Detection:11001-1-AP 1:800) with mouse brain tissue lysate 9500ug.



Immunohistochemical analysis of paraffin-embedded human lung cancer using 11001-1-AP (PANK2 antibody) at dilution of 1:10 (under 10x lens).



Immunofluorescent analysis of HepG2 cells using 11001-1-AP (PANK2 antibody) at dilution of 1:25 and Alexa Fluor 488-conjugated AffiniPure Goat Anti-Rabbit IgG(H+L).