

For Research Use Only

# PANK2 Polyclonal antibody, PBS Only

Catalog Number: 11001-1-PBS



## Basic Information

### Catalog Number:

11001-1-PBS

### Size:

100ug , Concentration: 1 mg/ml by Nanodrop;

### Source:

Rabbit

### Isotype:

IgG

### Immunogen Catalog Number:

AG1413

### GenBank Accession Number:

BC009421

### GeneID (NCBI):

80025

### UNIPROT ID:

Q9BZ23

### Full Name:

pantothenate kinase 2

### Calculated MW:

63 kDa

### Observed MW:

63-70 kDa

### Purification Method:

Antigen affinity purification

## Applications

### Tested Applications:

WB, IHC, IF/ICC, IP, Indirect ELISA

### Species Specificity:

human, mouse, rat

## Background Information

Pantothenate kinase 2 (PANK2) is an essential regulatory enzyme in coenzyme A biosynthesis. PANK2 mutations cause pantothenate kinase-associated neurodegeneration (PKAN), which leads to pigmentary retinopathy, progressive dystonia and other abnormalities (PMID:20603201). Pank2 protein is localized to mitochondria of neurons in human brain, distinguishing it from other pantothenate kinases that do not possess mitochondrial-targeting sequences (PMID:15659606). It has 4 isoforms produced by alternative splicing and alternative initiation.

## Storage

### Storage:

Store at -80°C.

### Storage Buffer:

PBS Only

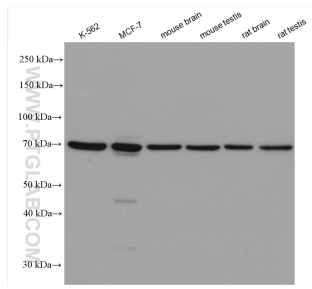
For technical support and original validation data for this product please contact:

T: 1 (888) 4PTGLAB (1-888-478-4522) (toll free in USA), or 1(312) 455-8498 (outside USA)

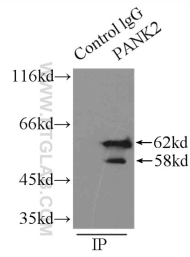
E: [proteintech@ptglab.com](mailto:proteintech@ptglab.com)  
W: [ptglab.com](http://ptglab.com)

This product is exclusively available under Proteintech Group brand and is not available to purchase from any other manufacturer.

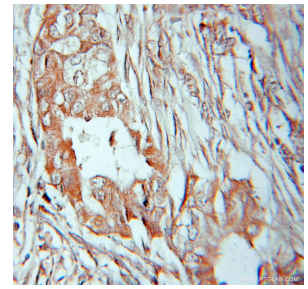
## Selected Validation Data



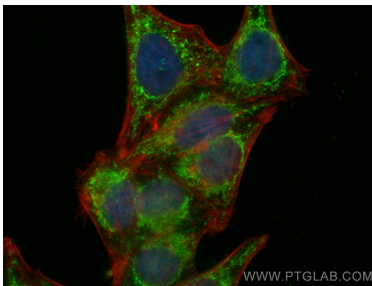
Various lysates were subjected to SDS PAGE followed by western blot with 11001-1-AP (PANK2 antibody) at dilution of 1:2000 incubated at room temperature for 1.5 hours. This data was developed using the same antibody clone with 11001-1-PBS in a different storage buffer formulation.



IP result of anti-PANK2 (IP: 11001-1-AP, 3ug; Detection: 11001-1-AP 1:800) with mouse brain tissue lysate 9500ug. This data was developed using the same antibody clone with 11001-1-PBS in a different storage buffer formulation.



Immunohistochemical analysis of paraffin-embedded human lung cancer using 11001-1-AP (PANK2 antibody) at dilution of 1:10 (under 10x lens). This data was developed using the same antibody clone with 11001-1-PBS in a different storage buffer formulation.



Immunofluorescent analysis of (4% PFA) fixed HepG2 cells using PANK2 antibody (11001-1-AP) at dilution of 1:200 and Multi-rAb Coralite® Plus 488-Goat Anti-Rabbit Recombinant Secondary Antibody (H+L) (RGAR002), CL594-phalloidin (red). This data was developed using the same antibody clone with 11001-1-PBS in a different storage buffer formulation.