

For Research Use Only

# MIPEP Polyclonal antibody

Catalog Number: 11002-1-AP

2 Publications



## Basic Information

### Catalog Number:

11002-1-AP

### Size:

150ul, Concentration: 750 ug/ml by Nanodrop and 400 ug/ml by Bradford method using BSA as the standard;

### Source:

Rabbit

### Isotype:

IgG

### Immunogen Catalog Number:

AG1451

### GenBank Accession Number:

BC009934

### GeneID (NCBI):

4285

### UNIPROT ID:

Q99797

### Full Name:

mitochondrial intermediate peptidase

### Calculated MW:

81 kDa

### Observed MW:

70-80 kDa

### Purification Method:

Antigen affinity purification

### Recommended Dilutions:

WB 1:500-1:2000

IHC 1:20-1:200

## Applications

### Tested Applications:

WB, IHC, ELISA

### Cited Applications:

WB, IHC

### Species Specificity:

human

### Cited Species:

human

### Positive Controls:

WB : HepG2 cells, MCF-7 cells

IHC : human prostate cancer tissue,

**Note-IHC: suggested antigen retrieval with TE buffer pH 9.0; (\*) Alternatively, antigen retrieval may be performed with citrate buffer pH 6.0**

## Background Information

MIPEP(Mitochondrial intermediate peptidase) is also named as MIP and belongs to the peptidase M3 family. It performs the final step in processing a specific class of nuclear-encoded proteins targeted to the mitochondrial matrix or inner membrane. The enzyme is a monomer of 75 kDa with a transit peptide and about 20% of the final MIP preparation consists of equimolar amounts of two peptides of 47 kDa and 28 kDa, which are apparently the products of a single cleavage of the 75 kDa protein. MIP is an independent endopeptidase acting on mitochondrial intermediate proteins as substrates.(PMID:1322290).

## Notable Publications

Author	Pubmed ID	Journal	Application
Qing Yu	39004717	Clin Proteomics	WB,IHC
Marcondes Marcelo F MF	19900404	Biochem Biophys Res Commun	WB

## Storage

### Storage:

Store at -20°C. Stable for one year after shipment.

### Storage Buffer:

PBS with 0.02% sodium azide and 50% glycerol pH 7.3.

Aliquoting is unnecessary for -20°C storage

\*\*\* 20ul sizes contain 0.1% BSA

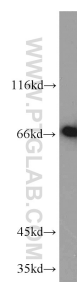
For technical support and original validation data for this product please contact:

T: 1 (888) 4PTGLAB (1-888-478-4522) (toll free in USA), or 1(312) 455-8498 (outside USA)

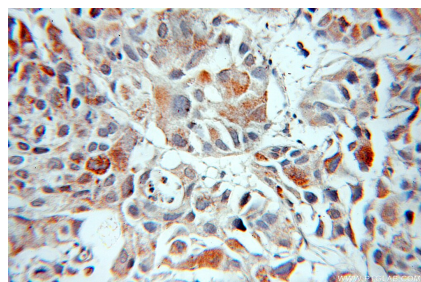
E: [proteintech@ptglab.com](mailto:proteintech@ptglab.com)  
W: [ptglab.com](http://ptglab.com)

This product is exclusively available under Proteintech Group brand and is not available to purchase from any other manufacturer.

## Selected Validation Data



HepG2 cells were subjected to SDS PAGE followed by western blot with 11002-1-AP (MIPEP antibody) at dilution of 1:1000 incubated at room temperature for 1.5 hours.



Immunohistochemical analysis of paraffin-embedded human prostate cancer using 11002-1-AP (MIPEP antibody) at dilution of 1:50 (under 10x lens).