

RPL3 Polyclonal antibody

Catalog Number: 11005-1-AP

Featured Product

8 Publications

Basic Information

Catalog Number:

11005-1-AP

Size:

150ul, Concentration: 600 µg/ml by Nanodrop;

Source:

Rabbit

Isotype:

IgG

Immunogen Catalog Number:

AG1436

GenBank Accession Number:

BC012786

GeneID (NCBI):

6122

Full Name:

ribosomal protein L3

Calculated MW:

46/27 kDa

Observed MW:

46 kDa

Purification Method:

Antigen affinity purification

Recommended Dilutions:

WB 1:2000-1:16000

IP 0.5-4.0 µg for IP and 1:500-1:1000 for WB

IHC 1:50-1:500

IF 1:50-1:500

Applications

Tested Applications:

IF, IHC, IP, WB, ELISA

Cited Applications:

IF, IHC, WB

Species Specificity:

human, mouse

Cited Species:

human, mouse

Positive Controls:

WB: Jurkat cells, human kidney tissue, HeLa cells, Raji cells, human placenta tissue, mouse kidney tissue

IP: mouse kidney tissue,

IHC: human prostate cancer tissue,

IF: HepG2 cells,

Note-IHC: suggested antigen retrieval with TE buffer pH 9.0; (*) Alternatively, antigen retrieval may be performed with citrate buffer pH 6.0

Background Information

Ribosomes, the complexes that catalyze protein synthesis, consist of a small 40S subunit and a large 60S subunit. Together these subunits are composed of 4 RNA species and approximately 80 structurally distinct proteins. RPL3, also named as TARBP-B and MGC104284, belongs to the ribosomal protein L3P family. This protein is a component of the 60S subunit. It can bind to the HIV-1 TAR mRNA, and it has been suggested that the protein contributes to tat-mediated transactivation. As is typical for genes encoding ribosomal proteins, there are multiple processed pseudogenes of this gene dispersed through the genome. This is a rabbit polyclonal antibody raised against the C terminus of human RPL3.

Notable Publications

Author	Pubmed ID	Journal	Application
Elizabeth I Vink	34725147	Proc Natl Acad Sci U S A	WB
Kai Ma	35637200	Cell Discov	WB
Xue Zhang	32531052	Carcinogenesis	IHC

Storage

Storage:

Store at -20°C. Stable for one year after shipment.

Storage Buffer:

PBS with 0.02% sodium azide and 50% glycerol pH 7.3.

Aliquoting is unnecessary for -20°C storage

*** 20ul sizes contain 0.1% BSA

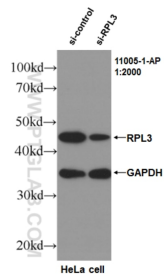
For technical support and original validation data for this product please contact:

T: 1 (888) 4PTGLAB (1-888-478-4522) (toll free in USA), or 1(312) 455-8498 (outside USA)

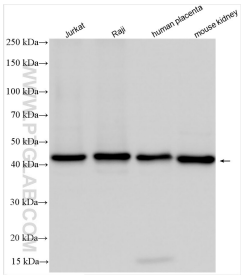
E: proteintech@ptglab.com
W: ptglab.com

This product is exclusively available under Proteintech Group brand and is not available to purchase from any other manufacturer.

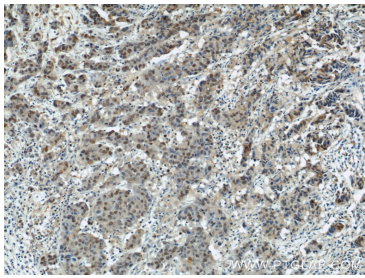
Selected Validation Data



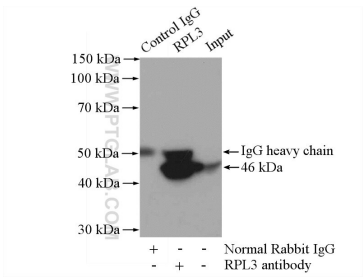
WB result of RPL3 antibody (11005-1-AP, 1:2000) with si-control and si-RPL3 transfected HeLa cells..



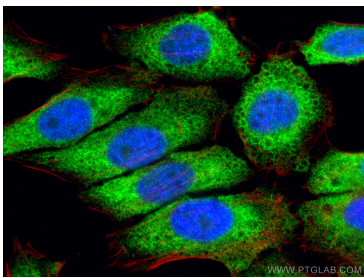
Various lysates were subjected to SDS PAGE followed by western blot with 11005-1-AP (RPL3 antibody) at dilution of 1:8000 incubated at room temperature for 1.5 hours.



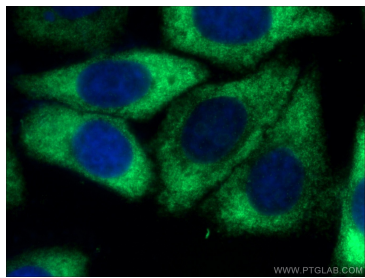
Immunohistochemical analysis of paraffin-embedded human prostate cancer using 11005-1-AP (RPL3 antibody) at dilution of 1:50 (under 10x lens).



IP Result of anti-RPL3 (IP:11005-1-AP, 4ug; Detection:11005-1-AP 1:500) with mouse kidney tissue lysate 4000ug.



Immunofluorescent analysis of (4% PFA) fixed HepG2 cells using RPL3 antibody (11005-1-AP) at dilution of 1:200 and Coralite®488-Conjugated AffiniPure Goat Anti-Rabbit IgG(H+L), CL594-phalloidin (red).



Immunofluorescent analysis of (-20°C Ethanol) fixed HepG2 cells using 11005-1-AP (RPL3 antibody) at dilution of 1:50 and Alexa Fluor 488-conjugated AffiniPure Goat Anti-Rabbit IgG(H+L).