

For Research Use Only

# WBS15/LAT2 Polyclonal antibody

Catalog Number: 11008-1-AP



## Basic Information

### Catalog Number:

11008-1-AP

### Size:

150ul, Concentration: 750 ug/ml by Nanodrop and 333 ug/ml by Bradford method using BSA as the standard;

### Source:

Rabbit

### Isotype:

IgG

### Immunogen Catalog Number:

AG1454

### GenBank Accession Number:

BC009204

### GeneID (NCBI):

7462

### UNIPROT ID:

Q9GZY6

### Full Name:

linker for activation of T cells family, member 2

### Calculated MW:

27 kDa

### Observed MW:

27-30 kDa

### Purification Method:

Antigen affinity purification

### Recommended Dilutions:

WB 1:1000-1:4000

## Applications

### Tested Applications:

WB, ELISA

### Species Specificity:

human, mouse

### Positive Controls:

WB: Raji cells, human placenta tissue, human brain tissue

## Background Information

WBS15, also named as LAB, NTAL, WBSCR15, WBSCR5 and LAT2 (Linker for activation of T-cells family member 2; not SLC7A8/LAT2), is involved in FCER1 (high affinity immunoglobulin epsilon receptor)-mediated signaling in mast and myeloid cells. WBS15 is involved in BCR (B-cell antigen receptor)-mediated signaling in B-cells. It is located in the Williams-Beuren syndrome (WBS) critical region. WBS15 has two isoform with MW 27-30 kDa and 12 kDa.

## Storage

### Storage:

Store at -20°C. Stable for one year after shipment.

### Storage Buffer:

PBS with 0.02% sodium azide and 50% glycerol pH 7.3.

Aliquoting is unnecessary for -20°C storage

\*\*\* 20ul sizes contain 0.1% BSA

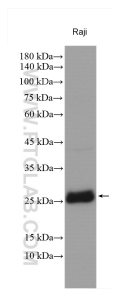
For technical support and original validation data for this product please contact:

T: 1 (888) 4PTGLAB (1-888-478-4522) (toll free in USA), or 1(312) 455-8498 (outside USA)

E: [proteintech@ptglab.com](mailto:proteintech@ptglab.com)  
W: [ptglab.com](http://ptglab.com)

This product is exclusively available under Proteintech Group brand and is not available to purchase from any other manufacturer.

## Selected Validation Data



Raji lysates were subjected to SDS PAGE followed by western blot with 11008-1-AP (WBS15/LAT2 antibody) at dilution of 1:2000 incubated at room temperature for 1.5 hours.