

For Research Use Only

# ASF1A/B Polyclonal antibody

Catalog Number: 11011-1-AP



## Basic Information

|  |  |   |
|--|--|---|
| <b>Catalog Number:</b><br>11011-1-AP   | <b>GenBank Accession Number:</b><br>BC010014   | <b>Purification Method:</b><br>Antigen affinity purification                        |
| <b>Size:</b><br>150ul , Concentration: 400 µg/ml by Nanodrop and 247 µg/ml by Bradford method using BSA as the standard; | <b>GeneID (NCBI):</b><br>55723   | <b>Recommended Dilutions:</b><br>WB 1:500-1:1000<br>IHC 1:50-1:500<br>IF 1:50-1:500 |
| <b>Source:</b><br>Rabbit   | <b>Full Name:</b><br>ASF1 anti-silencing function 1 homolog B ( <i>S. cerevisiae</i> ) |   |
| <b>Isotype:</b><br>IgG   | <b>Calculated MW:</b><br>202 aa, 22 kDa  |   |
| <b>Immunogen Catalog Number:</b><br>AG1477   | <b>Observed MW:</b><br>22 kDa  |   |

## Applications

|  |   |
|--|---|
| <b>Tested Applications:</b><br>IF, IHC, WB, ELISA  | <b>Positive Controls:</b><br>WB : mouse thymus tissue, HeLa cells<br>IHC : human lymphoma tissue,<br>IF : HeLa cells, |
| <b>Species Specificity:</b><br>human, mouse  |   |
| <b>Note-IHC: suggested antigen retrieval with TE buffer pH 9.0; (*) Alternatively, antigen retrieval may be performed with citrate buffer pH 6.0</b> |   |

## Background Information

ASF1B is a member of the H3/H4 family of histone chaperone proteins and is similar to the anti-silencing function-1 gene in yeast. The encoded protein is the substrate of the tousel-like kinase family of cell cycle-regulated kinases, and may play a key role in modulating the nucleosome structure of chromatin by ensuring a constant supply of histones at sites of nucleosome assembly. This gene encodes a member of the H3/H4 family of histone chaperone proteins and is similar to the anti-silencing function-1 gene in yeast. The encoded protein is the substrate of the tousel-like kinase family of cell cycle-regulated kinases, and may play a key role in modulating the nucleosome structure of chromatin by ensuring a constant supply of histones at sites of nucleosome assembly. This antibody reacts with the ASF1B and ASF1A protein.

## Storage

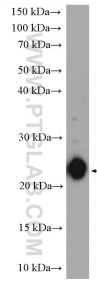
**Storage:**  
Store at -20°C. Stable for one year after shipment.  
**Storage Buffer:**  
PBS with 0.02% sodium azide and 50% glycerol pH 7.3.  
Aliquoting is unnecessary for -20°C storage

\*\*\* 20ul sizes contain 0.1% BSA

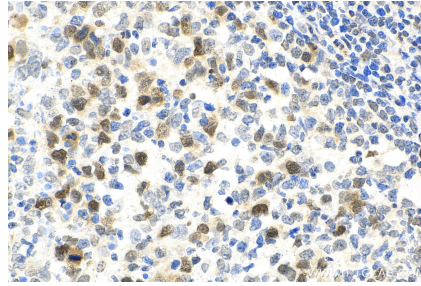
For technical support and original validation data for this product please contact:  
T: 1 (888) 4PTGLAB (1-888-478-4522) (toll free in USA), or 1(312) 455-8498 (outside USA)  
E: proteintech@ptglab.com  
W: ptglab.com

This product is exclusively available under Proteintech Group brand and is not available to purchase from any other manufacturer.

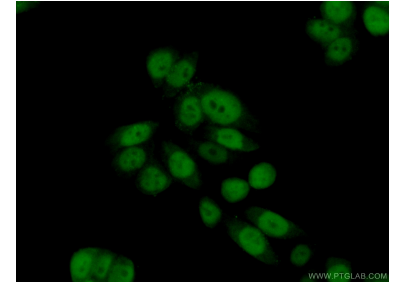
## Selected Validation Data



mouse thymus tissue were subjected to SDS PAGE followed by western blot with 11011-1-AP (ASF1B antibody) at dilution of 1:600 incubated at room temperature for 1.5 hours.



Immunohistochemical analysis of paraffin-embedded human lymphoma tissue slide using 11011-1-AP (ASF1A/B antibody) at dilution of 1:200 (under 40x lens). Heat mediated antigen retrieval with Tris-EDTA buffer (pH 9.0).



Immunofluorescent analysis of (10% Formaldehyde) fixed HeLa cells using 11011-1-AP (ASF1B antibody) at dilution of 1:50 and Alexa Fluor 488-conjugated AffiniPure Goat Anti-Rabbit IgG(H+L).