

For Research Use Only

SGTA Polyclonal antibody

Catalog Number: 11019-2-AP

Featured Product

21 Publications



Basic Information

Catalog Number:

11019-2-AP

Size:

150ul, Concentration: 750 ug/ml by Nanodrop and 373 ug/ml by Bradford method using BSA as the standard;

Source:

Rabbit

Isotype:

IgG

Immunogen Catalog Number:

AG1475

GenBank Accession Number:

BC008885

GeneID (NCBI):

6449

UNIPROT ID:

O43765

Full Name:

small glutamine-rich tetratricopeptide repeat (TPR)-containing, alpha

Calculated MW:

34 kDa

Observed MW:

34-37 kDa

Purification Method:

Antigen affinity purification

Recommended Dilutions:

WB 1:500-1:1000

IP 0.5-4.0 ug for 1.0-3.0 mg of total protein lysate

IHC 1:20-1:200

IF/ICC 1:200-1:800

Applications

Tested Applications:

WB, IHC, IF/ICC, IP, ELISA

Cited Applications:

WB, IHC, IF, CoIP

Species Specificity:

human, mouse, rat

Cited Species:

human, mouse

Positive Controls:

WB : K-562 cells, HeLa cells, human skeletal muscle tissue, mouse liver tissue, SH-SY5Y cells

IP : HeLa cells,

IHC : human lung cancer tissue, human liver cancer tissue, human prostate cancer tissue

IF/ICC : HeLa cells,

Note-IHC: suggested antigen retrieval with TE buffer pH 9.0; (*) Alternatively, antigen retrieval may be performed with citrate buffer pH 6.0

Background Information

Small glutamine-rich tetratricopeptide repeat-containing protein alpha (SGTA) is a steroid receptor molecular co-chaperone critical in a range of biological processes, including viral infection, cell division, mitosis, and cell cycle checkpoint activation. Overexpression of SGTA has been found in various cancers, including prostate/ovary/testis/liver/lung cancer.

Notable Publications

Author	Pubmed ID	Journal	Application
Oleksandra Novosylna	26545799	Biochimie	IF
Yuiko Kato	26346258	Vet J	IHC
Takehiro Iwata	32765682	Exp Ther Med	WB

Storage

Storage:

Store at -20°C. Stable for one year after shipment.

Storage Buffer:

PBS with 0.02% sodium azide and 50% glycerol pH 7.3.

Aliquoting is unnecessary for -20°C storage

*** 20ul sizes contain 0.1% BSA

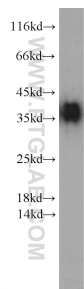
For technical support and original validation data for this product please contact:

T: 1 (888) 4PTGLAB (1-888-478-4522) (toll free in USA), or 1(312) 455-8498 (outside USA)

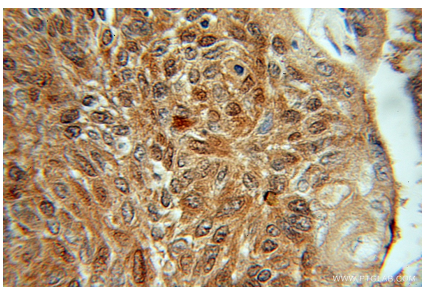
E: proteintech@ptglab.com
W: ptglab.com

This product is exclusively available under Proteintech Group brand and is not available to purchase from any other manufacturer.

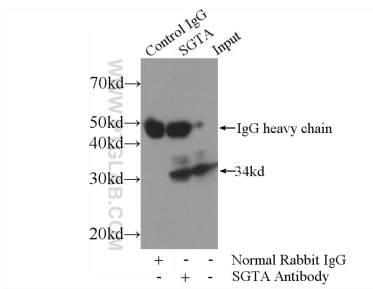
Selected Validation Data



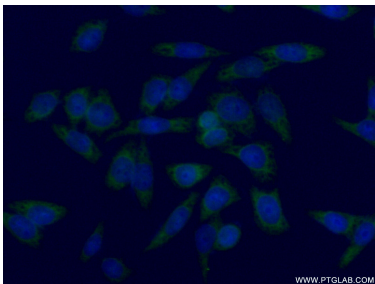
K-562 cells were subjected to SDS PAGE followed by western blot with 11019-2-AP (SGTA antibody) at dilution of 1:800 incubated at room temperature for 1.5 hours.



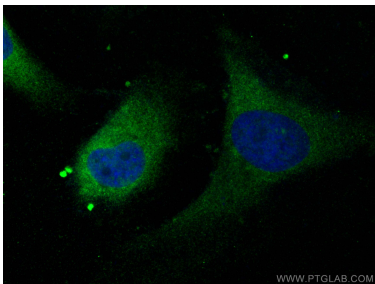
Immunohistochemical analysis of paraffin-embedded human lung cancer using 11019-2-AP (SGTA antibody) at dilution of 1:50 (under 10x lens).



IP result of anti-SGTA (IP:11019-2-AP, 4ug; Detection:11019-2-AP 1:1000) with HeLa cells lysate 2480ug.



Immunofluorescent analysis of (-20°C Ethanol) fixed HeLa cells using 11019-2-AP (SGTA antibody) at dilution of 1:50 and Alexa Fluor 488-conjugated Goat Anti-Rabbit IgG(H+L).



Immunofluorescent analysis of (-20°C Methanol) fixed HeLa cells using SGTA antibody (11019-2-AP) at dilution of 1:400 and CoraLite®488-Conjugated Goat Anti-Rabbit IgG(H+L) (SA00013-2).