

For Research Use Only

DRAP1 Polyclonal antibody

Catalog Number: 11020-1-AP



Basic Information

Catalog Number: 11020-1-AP	GenBank Accession Number: BC010025	Purification Method: Antigen affinity purification
Size: 150ul , Concentration: 900 µg/ml by Nanodrop and 400 µg/ml by Bradford method using BSA as the standard;	GeneID (NCBI): 10589	Recommended Dilutions: WB 1:500-1:1000 IHC 1:20-1:200 IF 1:20-1:200
Source: Rabbit	Full Name: DR1-associated protein 1 (negative cofactor 2 alpha)	
Isotype: IgG	Calculated MW: 22 kDa	
Immunogen Catalog Number: AG1470	Observed MW: 26-30 kDa	

Applications

Tested Applications:

IF, IHC, WB, ELISA

Species Specificity:

human, mouse, rat

Note-IHC: suggested antigen retrieval with TE buffer pH 9.0; (*) Alternatively, antigen retrieval may be performed with citrate buffer pH 6.0

Positive Controls:

WB : mouse testis tissue, human heart tissue, human brain tissue, mouse kidney tissue, rat testis tissue

IHC : human pancreas cancer tissue,

IF : HepG2 cells,

Background Information

Storage

Storage:

Store at -20°C. Stable for one year after shipment.

Storage Buffer:

PBS with 0.02% sodium azide and 50% glycerol pH 7.3.

Aliquoting is unnecessary for -20°C storage

*** 20ul sizes contain 0.1% BSA

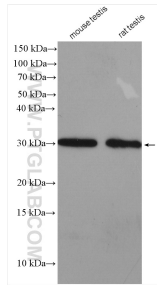
For technical support and original validation data for this product please contact:

T: 1 (888) 4PTGLAB (1-888-478-4522) (toll free in USA), or 1(312) 455-8498 (outside USA)

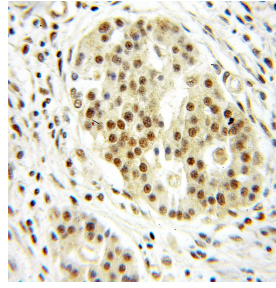
E: proteintech@ptglab.com
W: ptglab.com

This product is exclusively available under Proteintech Group brand and is not available to purchase from any other manufacturer.

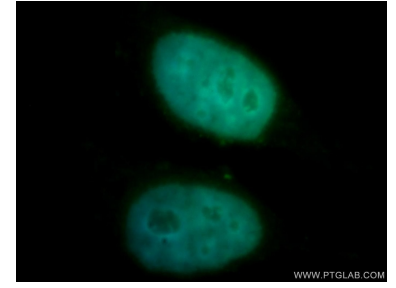
Selected Validation Data



Various lysates were subjected to SDS PAGE followed by western blot with 11020-1-AP (DRAP1 antibody) at dilution of 1:600 incubated at room temperature for 1.5 hours.



Immunohistochemical analysis of paraffin-embedded human pancreas cancer using 11020-1-AP (DRAP1 antibody) at dilution of 1:50 (under 10x lens).



Immunofluorescent analysis of HepG2 cells, using DRAP1 antibody 11020-1-AP at 1:100 dilution and FITC-labeled donkey anti-rabbit IgG (green). Blue pseudocolor = DAPI (fluorescent DNA dye).