

For Research Use Only

PGM2 Polyclonal antibody

Catalog Number: 11022-1-AP **1 Publications**



Basic Information

Catalog Number: 11022-1-AP	GenBank Accession Number: BC010087	Purification Method: Antigen affinity purification
Size: 150ul , Concentration: 700 µg/ml by Nanodrop and 333 µg/ml by Bradford method using BSA as the standard;	GeneID (NCBI): 55276	Recommended Dilutions: WB 1:500-1:2000 IP 0.5-4.0 ug for IP and 1:200-1:1000 for WB IHC 1:50-1:500
Source: Rabbit	Full Name: phosphoglucomutase 2	
Isotype: IgG	Calculated MW: 68 kDa	
Immunogen Catalog Number: AG1488	Observed MW: 68 kDa	

Applications

Tested Applications: IHC, IP, WB, ELISA	Positive Controls: WB : HEK-293 cells, human brain tissue, fetal human brain tissue IP : HEK-293 cells, IHC : human pancreas cancer tissue,
Cited Applications: WB	
Species Specificity: human	
Cited Species: human	

Note-IHC: suggested antigen retrieval with TE buffer pH 9.0; (*) Alternatively, antigen retrieval may be performed with citrate buffer pH 6.0

Background Information

Notable Publications

Author	Pubmed ID	Journal	Application
Owen S Skinner	37198474	Nat Metab	WB

Storage

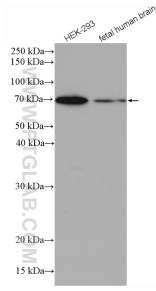
Storage:
Store at -20°C. Stable for one year after shipment.
Storage Buffer:
PBS with 0.02% sodium azide and 50% glycerol pH 7.3.
Aliquoting is unnecessary for -20°C storage

*** 20ul sizes contain 0.1% BSA

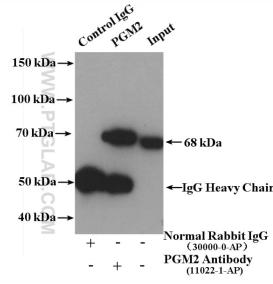
For technical support and original validation data for this product please contact:
T: 1 (888) 4PTGLAB (1-888-478-4522) (toll free in USA), or 1(312) 455-8498 (outside USA) E: proteintech@ptglab.com W: ptglab.com

This product is exclusively available under Proteintech Group brand and is not available to purchase from any other manufacturer.

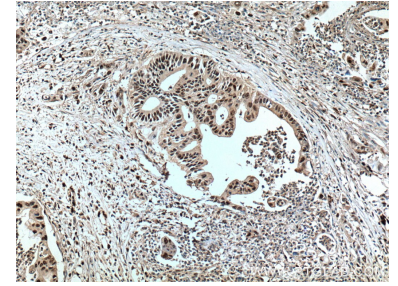
Selected Validation Data



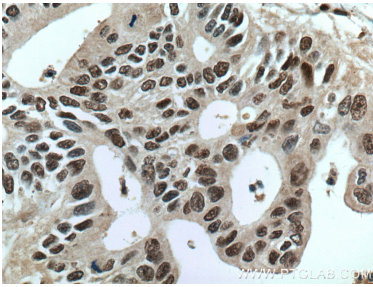
Various lysates were subjected to SDS PAGE followed by western blot with 11022-1-AP (PGM2 antibody) at dilution of 1:1000 incubated at room temperature for 1.5 hours.



IP result of anti-PGM2 (IP:11022-1-AP, 4ug; Detection:11022-1-AP 1:200) with HEK-293 cells lysate 2400 ug.



Immunohistochemical analysis of paraffin-embedded human pancreas cancer tissue slide using 11022-1-AP (PGM2 antibody) at dilution of 1:200 (under 10x lens. Heat mediated antigen retrieval with Tris-EDTA buffer (pH 9.0).



Immunohistochemical analysis of paraffin-embedded human pancreas cancer tissue slide using 11022-1-AP (PGM2 antibody) at dilution of 1:200 (under 40x lens. Heat mediated antigen retrieval with Tris-EDTA buffer (pH 9.0).