

For Research Use Only

# PSMB4 Polyclonal antibody

Catalog Number: 11029-1-AP

Featured Product

5 Publications



## Basic Information

### Catalog Number:

11029-1-AP

### Size:

150ul, Concentration: 650 ug/ml by Nanodrop and 267 ug/ml by Bradford method using BSA as the standard;

### Source:

Rabbit

### Isotype:

IgG

### Immunogen Catalog Number:

AG1500

### GenBank Accession Number:

BC010088

### GeneID (NCBI):

5692

### UNIPROT ID:

P28070

### Full Name:

proteasome (prosome, macropain) subunit, beta type, 4

### Calculated MW:

29 kDa

### Observed MW:

25 kDa

### Purification Method:

Antigen affinity purification

### Recommended Dilutions:

WB 1:2000-1:10000

IHC 1:20-1:200

IF/ICC 1:20-1:200

## Applications

### Tested Applications:

WB, IHC, IF/ICC, ELISA

### Cited Applications:

WB, IHC, IF

### Species Specificity:

human, mouse

### Cited Species:

human, mouse, pig, monkey

**Note-IHC: suggested antigen retrieval with TE buffer pH 9.0; (\*) Alternatively, antigen retrieval may be performed with citrate buffer pH 6.0**

### Positive Controls:

WB: HEK-293 cells, mouse skeletal muscle tissue, human placenta tissue, human skeletal muscle tissue, MCF-7 cells

IHC: human breast cancer tissue,

IF/ICC: MCF-7 cells, HepG2 cells

## Background Information

PSMB4 (Proteasome subunit beta type-4) is also named as PROS26 and belongs to the peptidase T1B family. The proteasome is a multicatalytic proteinase complex which is characterized by its ability to cleave peptides with Arg, Phe, Tyr, Leu, and Glu adjacent to the leaving group at neutral or slightly basic pH. The human protein PSMB4 is known mainly as an interaction partner for several proteins, suggesting an important function of binding not only to the lid, but also to the 20 S core of the proteasome. PSMB4 might be a major site for proteasome regulation, where signals from the outside might be transduced to the protease activities inside (PMID:15660529). The full length 30 kDa protein has a propeptide of 45 amino acid.

## Notable Publications

Author	Pubmed ID	Journal	Application
Genee Y Lee	24755469	Cancer Res	WB
Hua Wang	30066880	Oncol Rep	WB, IHC
Xinzhi Li	37777158	J Biol Chem	WB

## Storage

### Storage:

Store at -20°C. Stable for one year after shipment.

### Storage Buffer:

PBS with 0.02% sodium azide and 50% glycerol pH 7.3.

Aliquoting is unnecessary for -20°C storage

\*\*\* 20ul sizes contain 0.1% BSA

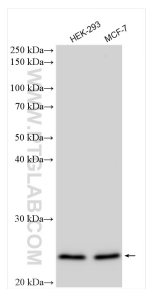
For technical support and original validation data for this product please contact:

T: 1 (888) 4PTGLAB (1-888-478-4522) (toll free in USA), or 1(312) 455-8498 (outside USA)

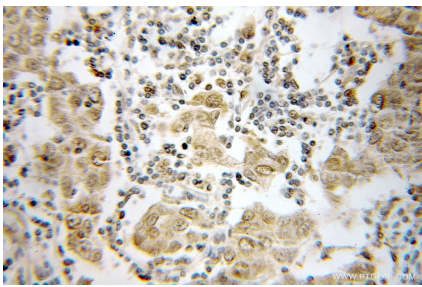
E: proteintech@ptglab.com  
W: ptglab.com

This product is exclusively available under Proteintech Group brand and is not available to purchase from any other manufacturer.

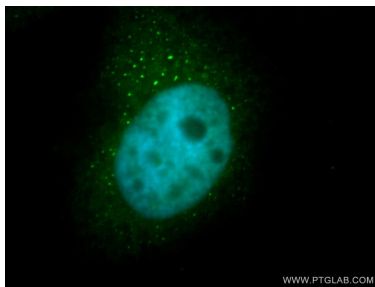
## Selected Validation Data



Various lysates were subjected to SDS PAGE followed by western blot with 11029-1-AP (PSMB4 antibody) at dilution of 1:5000 incubated at room temperature for 1.5 hours.



Immunohistochemical analysis of paraffin-embedded human breast cancer using 11029-1-AP (PSMB4 antibody) at dilution of 1:50 (under 10x lens).



Immunofluorescent analysis of MCF-7 cells, using PSMB4 antibody 11029-1-AP at 1:50 dilution and FITC-labeled donkey anti-rabbit IgG(green). Blue pseudocolor = DAPI (fluorescent DNA dye).