

For Research Use Only

# FEM1B Polyclonal antibody

Catalog Number: 11030-1-AP **1 Publications**



## Basic Information

<b>Catalog Number:</b> 11030-1-AP	<b>GenBank Accession Number:</b> BC010122	<b>Purification Method:</b> Antigen affinity purification
<b>Size:</b> 150ul , Concentration: 700 µg/ml by Nanodrop and 333 µg/ml by Bradford method using BSA as the standard;	<b>GeneID (NCBI):</b> 10116	<b>Recommended Dilutions:</b> WB 1:500-1:3000 IHC 1:20-1:200
<b>Source:</b> Rabbit	<b>UNIPROT ID:</b> Q9UK73	
<b>Isotype:</b> IgG	<b>Full Name:</b> fem-1 homolog b (C. elegans)	
<b>Immunogen Catalog Number:</b> AG1497	<b>Calculated MW:</b> 70 kDa	
	<b>Observed MW:</b> 61 kDa	

## Applications

<b>Tested Applications:</b> WB, IHC, ELISA	<b>Positive Controls:</b> WB : Jurkat cells, mouse testis tissue IHC : human prostate cancer tissue,
<b>Cited Applications:</b> WB	
<b>Species Specificity:</b> human, mouse, rat	
<b>Cited Species:</b> human	
<b>Note-IHC: suggested antigen retrieval with TE buffer pH 9.0; (*) Alternatively, antigen retrieval may be performed with citrate buffer pH 6.0</b>	

## Background Information

FEM1B, also named F1AA, and KIAA0396 is a 627 amino acid protein belonging to the fem-1 family. FEM1B is highly expressed in the testis and weakly expressed in other tissues. FEM1B localizes both in the nucleus and cytoplasm. In the nucleus, the protein level increased slightly after camptothecin (CPT) treatment. FEM1B is a component of an E3 ubiquitin-protein ligase complex, which may act as a substrate recognition subunit. FEM1B is involved in apoptosis by acting as a death receptor-associated protein that mediates apoptosis. FEM1B is also involved in glucose homeostasis in pancreatic islets. FEM1B functions as an adapter/mediator in replication stress-induced signaling that leads to the activation of CHEK1.

## Notable Publications

Author	Pubmed ID	Journal	Application
Rachael McMinimy	39642856	Mol Cell	WB

## Storage

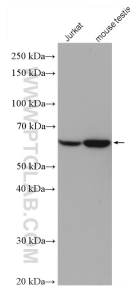
**Storage:**  
Store at -20°C. Stable for one year after shipment.  
**Storage Buffer:**  
PBS with 0.02% sodium azide and 50% glycerol pH 7.3.  
Aliquoting is unnecessary for -20°C storage

\*\*\* 20ul sizes contain 0.1% BSA

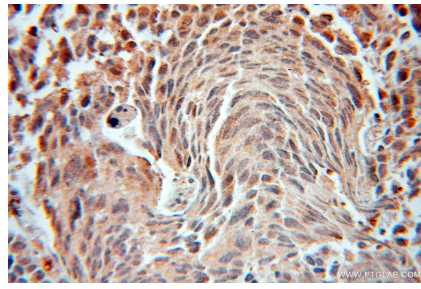
For technical support and original validation data for this product please contact:  
T: 1 (888) 4PTGLAB (1-888-478-4522) (toll free in USA), or 1(312) 455-8498 (outside USA)  
E: proteintech@ptglab.com  
W: ptglab.com

This product is exclusively available under Proteintech Group brand and is not available to purchase from any other manufacturer.

## Selected Validation Data



Various lysates were subjected to SDS PAGE followed by western blot with 11030-1-AP (FEM1B antibody) at dilution of 1:1500 incubated at room temperature for 1.5 hours.



Immunohistochemical analysis of paraffin-embedded human prostate cancer using 11030-1-AP (FEM1B antibody) at dilution of 1:50 (under 10x lens).