

For Research Use Only

B4GALT3 Polyclonal antibody

Catalog Number: 11041-1-AP

4 Publications



Basic Information

Catalog Number: 11041-1-AP	GenBank Accession Number: BC009985	Purification Method: Antigen affinity purification
Size: 150ul, Concentration: 350 ug/ml by Nanodrop;	GeneID (NCBI): 8703	Recommended Dilutions: WB 1:1000-1:4000
Source: Rabbit	UNIPROT ID: O60512	IHC 1:20-1:300
Isotype: IgG	Full Name: UDP-Gal:betaGlcNAc beta 1,4-galactosyltransferase, polypeptide 3	IF/ICC 1:200-1:800
Immunogen Catalog Number: AG1487	Calculated MW: 44 kDa	
	Observed MW: 44 kDa	

Applications

Tested Applications: WB, IHC, IF/ICC, ELISA	Positive Controls: WB : HeLa cells, HepG2 cells, NIH/3T3 cells
Cited Applications: WB, IF	IHC : human liver cancer tissue, human breast cancer tissue
Species Specificity: human, mouse	IF/ICC : MCF-7 cells, A431 cells
Cited Species: human	

Note-IHC: suggested antigen retrieval with TE buffer pH 9.0; (*) Alternatively, antigen retrieval may be performed with citrate buffer pH 6.0

Background Information

B4GALT3 is an enzyme responsible for the generation of poly-N-acetylglucosamine. The B4GALTs transfer galactose from UDP-Gal to N-acetylglucosamine (GlcNAc)-terminated oligosaccharides on N-glycan, O-glycan, or glycolipid to form N-acetylglucosamin (PMID: 23444218). B4GALT3 has been found to regulate cancer cell invasion (PMID: 25659296). B4GALT3 knockdown increased cell migration, invasion and the activation of β 1 integrin and its downstream signaling (PMID: 24403309).

Notable Publications

Author	Pubmed ID	Journal	Application
Katarzyna Binięda	33477664	Int J Mol Sci	WB,IF
Miao He	38244579	Aging (Albany NY)	WB
Karsten Nalbach	36797266	Nat Commun	WB

Storage

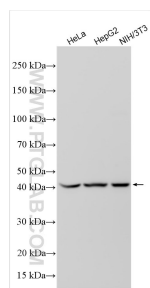
Storage:
Store at -20°C. Stable for one year after shipment.
Storage Buffer:
PBS with 0.02% sodium azide and 50% glycerol pH 7.3.
Aliquoting is unnecessary for -20°C storage

*** 20ul sizes contain 0.1% BSA

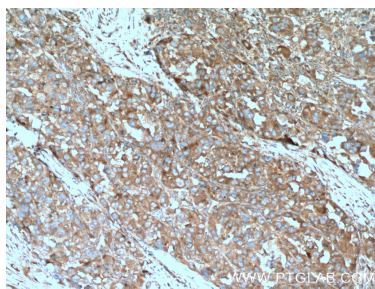
For technical support and original validation data for this product please contact:
T: 1 (888) 4PTGLAB (1-888-478-4522) (toll free in USA), or 1(312) 455-8498 (outside USA)
E: proteintech@ptglab.com
W: ptglab.com

This product is exclusively available under Proteintech Group brand and is not available to purchase from any other manufacturer.

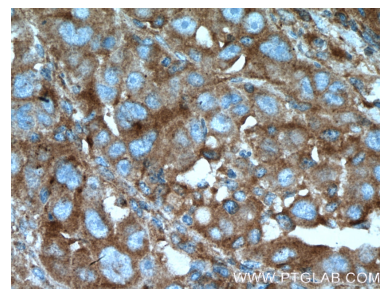
Selected Validation Data



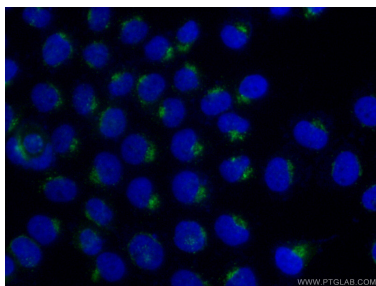
Various lysates were subjected to SDS PAGE followed by western blot with 11041-1-AP (B4GALT3 antibody) at dilution of 1:2000 incubated at room temperature for 1.5 hours.



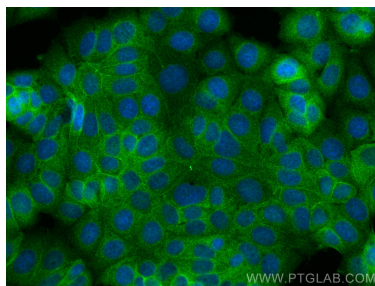
Immunohistochemical analysis of paraffin-embedded human liver cancer tissue slide using 11041-1-AP (B4GALT3 antibody) at dilution of 1:200 (under 10x lens. Heat mediated antigen retrieval with Tris-EDTA buffer (pH 9.0).



Immunohistochemical analysis of paraffin-embedded human liver cancer tissue slide using 11041-1-AP (B4GALT3 antibody) at dilution of 1:200 (under 40x lens. Heat mediated antigen retrieval with Tris-EDTA buffer (pH 9.0).



Immunofluorescent analysis of (4% PFA) fixed A431 cells using 11041-1-AP (B4GALT3 antibody) at dilution of 1:50 and Alexa Fluor 488-Conjugated AffiniPure Goat Anti-Rabbit IgG(H+L).



Immunofluorescent analysis of (4% PFA) fixed MCF-7 cells using B4GALT3 antibody (11041-1-AP) at dilution of 1:400 and CoraLite®488-Conjugated Goat Anti-Rabbit IgG(H+L) (SA00013-2).