

For Research Use Only

B4GALT3 Polyclonal antibody, PBS Only

Catalog Number: 11041-1-PBS



Basic Information

Catalog Number:

11041-1-PBS

Size:

100ug, Concentration: 1 mg/ml by Nanodrop;

Source:

Rabbit

Isotype:

IgG

Immunogen Catalog Number:

AG1487

GenBank Accession Number:

BC009985

GeneID (NCBI):

8703

UNIPROT ID:

O60512

Full Name:

UDP-Gal:betaGlcNAc beta 1,4-galactosyltransferase, polypeptide 3

Calculated MW:

44 kDa

Observed MW:

44 kDa

Purification Method:

Antigen affinity purification

Applications

Tested Applications:

WB, IHC, IF/ICC, Indirect ELISA

Species Specificity:

human, mouse

Background Information

B4GALT3 is an enzyme responsible for the generation of poly-N-acetyllactosamine. The B4GALTs transfer galactose from UDP-Gal to N-acetylglucosamine (GlcNAc)-terminated oligosaccharides on N-glycan, O-glycan, or glycolipid to form N-acetyllactosamin (PMID: 23444218). B4GALT3 has been found to regulate cancer cell invasion (PMID: 25659296). B4GALT3 knockdown increased cell migration, invasion and the activation of β 1 integrin and its downstream signaling (PMID: 24403309).

Storage

Storage:

Store at -80°C.

Storage Buffer:

PBS only, pH7.3

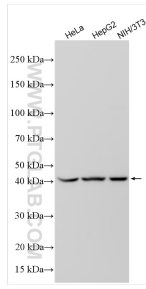
For technical support and original validation data for this product please contact:

T: 1 (888) 4PTGLAB (1-888-478-4522) (toll free in USA), or 1(312) 455-8498 (outside USA)

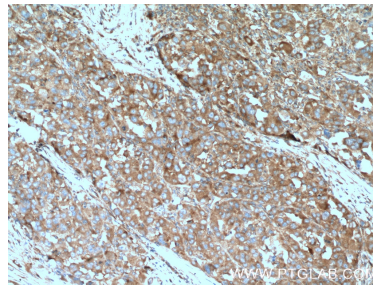
E: proteintech@ptglab.com
W: ptglab.com

This product is exclusively available under Proteintech Group brand and is not available for purchase from any other manufacturer.

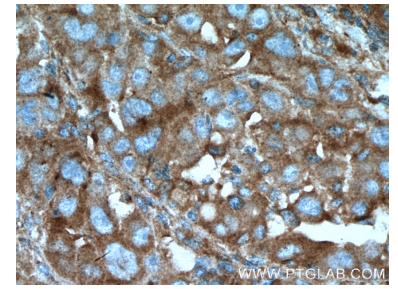
Selected Validation Data



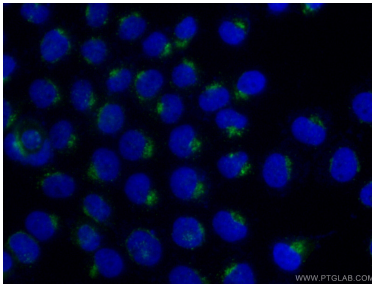
Various lysates were subjected to SDS PAGE followed by western blot with 11041-1-AP (B4GALT3 antibody) at dilution of 1:2000 incubated at room temperature for 1.5 hours. This data was developed using the same antibody clone with 11041-1-PBS in a different storage buffer formulation.



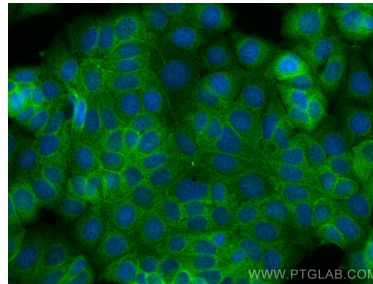
Immunohistochemical analysis of paraffin-embedded human liver cancer tissue slide using 11041-1-AP (B4GALT3 antibody) at dilution of 1:200 (under 10x lens. Heat mediated antigen retrieval with Tris-EDTA buffer (pH 9.0). This data was developed using the same antibody clone with 11041-1-PBS in a different storage buffer formulation.



Immunohistochemical analysis of paraffin-embedded human liver cancer tissue slide using 11041-1-AP (B4GALT3 antibody) at dilution of 1:200 (under 40x lens. Heat mediated antigen retrieval with Tris-EDTA buffer (pH 9.0). This data was developed using the same antibody clone with 11041-1-PBS in a different storage buffer formulation.



Immunofluorescent analysis of (4% PFA) fixed A431 cells using 11041-1-AP (B4GALT3 antibody) at dilution of 1:50 and Alexa Fluor 488-Conjugated AffiniPure Goat Anti-Rabbit IgG(H+L). This data was developed using the same antibody clone with 11041-1-PBS in a different storage buffer formulation.



Immunofluorescent analysis of (4% PFA) fixed MCF-7 cells using B4GALT3 antibody (11041-1-AP) at dilution of 1:400 and CoraLite®488-Conjugated Goat Anti-Rabbit IgG(H+L) (SA00013-2). This data was developed using the same antibody clone with 11041-1-PBS in a different storage buffer formulation.