

For Research Use Only

AMD1 Polyclonal antibody

Catalog Number: 11052-1-AP

Featured Product

17 Publications



Basic Information

Catalog Number:

11052-1-AP

Size:

150ul, Concentration: 500 ug/ml by Nanodrop;

Source:

Rabbit

Isotype:

IgG

Immunogen Catalog Number:

AG1525

GenBank Accession Number:

BC000171

GeneID (NCBI):

262

UNIPROT ID:

P17707

Full Name:

adenosylmethionine decarboxylase 1

Calculated MW:

38 kDa, 32 kDa

Observed MW:

38-40 kDa

Purification Method:

Antigen affinity purification

Recommended Dilutions:

WB 1:200-1:1000

IHC 1:20-1:200

Applications

Tested Applications:

WB, IHC, ELISA

Cited Applications:

WB, IHC, IF

Species Specificity:

human

Cited Species:

human, mouse

Positive Controls:

WB : A431 cells,

IHC : human prostate cancer tissue, human colon cancer tissue

Note-IHC: suggested antigen retrieval with TE buffer pH 9.0; (*) Alternatively, antigen retrieval may be performed with citrate buffer pH 6.0

Notable Publications

Author	Pubmed ID	Journal	Application
Takeshi Uemura	32995657	Heliyon	WB
Lijiao Xu	31140554	Carcinogenesis	
Jun Yamamoto	35434545	iScience	WB

Storage

Storage:

Store at -20°C. Stable for one year after shipment.

Storage Buffer:

PBS with 0.02% sodium azide and 50% glycerol, pH7.3

Aliquoting is unnecessary for -20°C storage

*** 20ul sizes contain 0.1% BSA

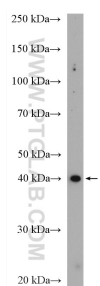
For technical support and original validation data for this product please contact:

T: 1 (888) 4PTGLAB (1-888-478-4522) (toll free in USA), or 1(312) 455-8498 (outside USA)

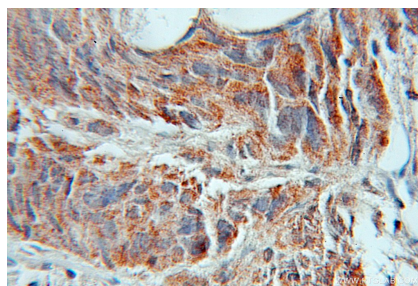
E: proteintech@ptglab.com
W: ptglab.com

This product is exclusively available under Proteintech Group brand and is not available to purchase from any other manufacturer.

Selected Validation Data



A431 cells were subjected to SDS PAGE followed by western blot with 11052-1-AP (AMD1 antibody) at dilution of 1:300 incubated at room temperature for 1.5 hours.



Immunohistochemical analysis of paraffin-embedded human prostate cancer using 11052-1-AP (AMD1 antibody) at dilution of 1:50 (under 10x lens).