

For Research Use Only

Cathepsin F Polyclonal antibody

Catalog Number: 11055-1-AP

Featured Product

4 Publications



Basic Information

Catalog Number: 11055-1-AP	GenBank Accession Number: BC011682	Purification Method: Antigen affinity purification
Size: 150ul, Concentration: 300 ug/ml by Nanodrop and 250 ug/ml by Bradford method using BSA as the standard;	GeneID (NCBI): 8722	Recommended Dilutions: IHC 1:20-1:200
Source: Rabbit	UNIPROT ID: Q9UBX1	
Isotype: IgG	Full Name: cathepsin F	
Immunogen Catalog Number: AG1521	Calculated MW: 53 kDa and 34 kDa	

Applications

Tested Applications: IHC, ELISA	Positive Controls: IHC : human prostate cancer tissue, human heart tissue, human stomach cancer tissue, mouse heart tissue, mouse liver tissue
Cited Applications: WB, IHC	
Species Specificity: human, mouse, rat	
Cited Species: human, rat	
Note-IHC: suggested antigen retrieval with TE buffer pH 9.0; (*) Alternatively, antigen retrieval may be performed with citrate buffer pH 6.0	

Background Information

CTSF (Cathepsin F) is a member of the papain family of cysteine proteases. These enzymes represent a major component of the lysosomal proteolytic system. They are synthesized as inactive precursors consisting of a signal sequence, a propeptide, and a catalytically active mature region. Cathepsins are routed to the endosomal/lysosomal compartment via the mannose 6-phosphate receptor pathway. The deduced 484-amino acid cathepsin F protein has a signal sequence and potential glycosylation sites.

Notable Publications

Author	Pubmed ID	Journal	Application
Saghizadeh Mehrnoosh M	19828126	Brain Res Bull	IHC
Chaoling Yao	34372921	Stem Cell Res Ther	IHC
Yuqi Lin	36749723	Proc Natl Acad Sci U S A	IHC

Storage

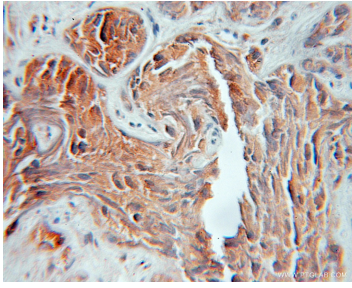
Storage:
Store at -20°C. Stable for one year after shipment.
Storage Buffer:
PBS with 0.02% sodium azide and 50% glycerol pH 7.3.
Aliquoting is unnecessary for -20°C storage

*** 20ul sizes contain 0.1% BSA

For technical support and original validation data for this product please contact:
T: 1 (888) 4PTGLAB (1-888-478-4522) (toll free in USA), or 1(312) 455-8498 (outside USA)
E: proteintech@ptglab.com
W: ptglab.com

This product is exclusively available under Proteintech Group brand and is not available to purchase from any other manufacturer.

Selected Validation Data



Immunohistochemical analysis of paraffin-embedded human prostate cancer using 11055-1-AP (Cathepsin F antibody) at dilution of 1:100 (under 10x lens).