

For Research Use Only

# RBMS1 Polyclonal antibody

Catalog Number: 11061-2-AP **1 Publications**



## Basic Information

<b>Catalog Number:</b> 11061-2-AP	<b>GenBank Accession Number:</b> BC018951	<b>Purification Method:</b> Antigen affinity purification
<b>Size:</b> 150ul , Concentration: 300 µg/ml by Nanodrop;	<b>GeneID (NCBI):</b> 5937	<b>Recommended Dilutions:</b> WB 1:500-1:3000 IP 0.5-4.0 ug for IP and 1:500-1:1000 for WB
<b>Source:</b> Rabbit	<b>Full Name:</b> RNA binding motif, single stranded interacting protein 1	<b>IF 1:20-1:200</b>
<b>Isotype:</b> IgG	<b>Calculated MW:</b> 45 kDa	
<b>Immunogen Catalog Number:</b> AG1493	<b>Observed MW:</b> 45 kDa	

## Applications

<b>Tested Applications:</b> IF, IP, WB, ELISA	<b>Positive Controls:</b>
<b>Cited Applications:</b> IHC, WB	<b>WB :</b> HEK-293 cells, HeLa cells, C6 cells
<b>Species Specificity:</b> human, mouse, rat	<b>IP :</b> HeLa cells,
<b>Cited Species:</b> human	<b>IF :</b> HepG2 cells,

## Background Information

### Notable Publications

Author	Pubmed ID	Journal	Application
Hang Zhai	36989117	Epigenetics	WB,IHC

## Storage

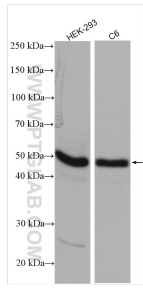
**Storage:**  
Store at -20°C. Stable for one year after shipment.  
**Storage Buffer:**  
PBS with 0.02% sodium azide and 50% glycerol pH 7.3.  
Aliquoting is unnecessary for -20°C storage

**\*\*\* 20ul sizes contain 0.1% BSA**

For technical support and original validation data for this product please contact:  
T: 1 (888) 4PTGLAB (1-888-478-4522) (toll free in USA), or 1(312) 455-8498 (outside USA)  
E: proteintech@ptglab.com  
W: ptglab.com

This product is exclusively available under Proteintech Group brand and is not available to purchase from any other manufacturer.

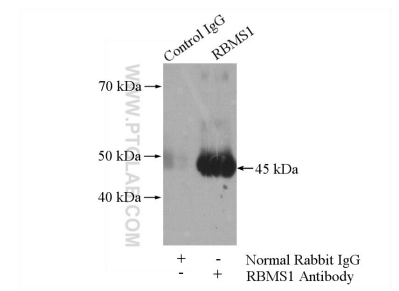
## Selected Validation Data



Various lysates were subjected to SDS PAGE followed by western blot with 11061-2-AP (RBMS1 antibody) at dilution of 1:1500 incubated at room temperature for 1.5 hours.



Immunofluorescent analysis of HepG2 cells, using RBMS1 antibody 11061-2-AP at 1:100 dilution and FITC-labeled donkey anti-rabbit IgG (green). Blue pseudocolor = DAPI (fluorescent DNA dye).



IP Result of anti-RBMS1 (IP:11061-2-AP, 4ug; Detection:11061-2-AP 1:500) with HeLa cells lysate 1200ug.