

For Research Use Only

# SYCE1 Polyclonal antibody

Catalog Number: 11063-1-AP

4 Publications



## Basic Information

### Catalog Number:

11063-1-AP

### Size:

150ul, Concentration: 800 ug/ml by Nanodrop and 400 ug/ml by Bradford method using BSA as the standard;

### Source:

Rabbit

### Isotype:

IgG

### Immunogen Catalog Number:

AG1527

### GenBank Accession Number:

BC034821

### GeneID (NCBI):

93426

### UNIPROT ID:

Q8N0S2

### Full Name:

synaptonemal complex central element protein 1

### Calculated MW:

315 aa, 36 kDa

### Observed MW:

40-44 kDa

### Purification Method:

Antigen affinity purification

### Recommended Dilutions:

WB 1:500-1:2000

IP 0.5-4.0 ug for 1.0-3.0 mg of total protein lysate

IHC 1:20-1:200

IF/ICC 1:50-1:500

## Applications

### Tested Applications:

WB, IHC, IF/ICC, IP, ELISA

### Cited Applications:

WB, IF

### Species Specificity:

human, mouse, rat

### Cited Species:

mouse

**Note-IHC: suggested antigen retrieval with TE buffer pH 9.0; (\*) Alternatively, antigen retrieval may be performed with citrate buffer pH 6.0**

### Positive Controls:

WB: mouse testis tissue,

IP: mouse testis tissue,

IHC: human ovary tumor tissue,

IF/ICC: HepG2 cells,

## Background Information

Synaptonemal Complex Central Element 1 (Syce1) is a major component of the synaptonemal complex (SC), which is formed between homologous chromosomes during meiotic prophase and exists only during the first meiotic division. The SYCE1 structural core, formed by an N-terminal region of amino acids 25-179, is an  $\alpha$ -helical dimer that adopts an anti-parallel "coiled-coil"-like structure of approximately 20 nm in length (PMID: 30607510). The male Syce1 null mice had abundant primary spermatocytes and lacked postmeiotic cells; arrested cells were likely eliminated by accelerated apoptosis (PMID: 25899990).

## Notable Publications

Author	Pubmed ID	Journal	Application
Laura Gómez-H	27796301	Nat Commun	IF
Qi Wang	35697131	J Steroid Biochem Mol Biol	WB,IF
Paul S Cooke	34407397	Cell Rep	WB,IF

## Storage

### Storage:

Store at -20°C. Stable for one year after shipment.

### Storage Buffer:

PBS with 0.02% sodium azide and 50% glycerol pH 7.3.

Aliquoting is unnecessary for -20°C storage

\*\*\* 20ul sizes contain 0.1% BSA

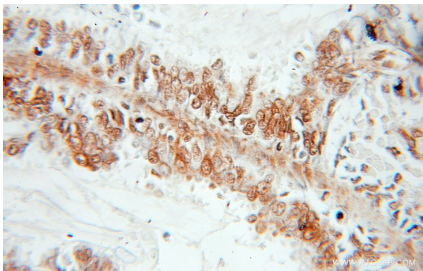
For technical support and original validation data for this product please contact:

T: 1 (888) 4PTGLAB (1-888-478-4522) (toll free in USA), or 1(312) 455-8498 (outside USA)

E: [proteintech@ptglab.com](mailto:proteintech@ptglab.com)  
W: [ptglab.com](http://ptglab.com)

This product is exclusively available under Proteintech Group brand and is not available to purchase from any other manufacturer.

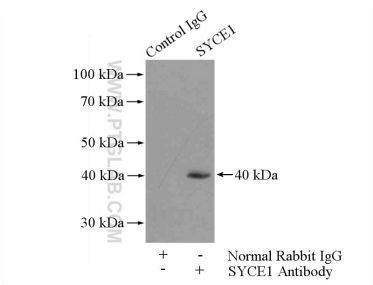
Selected Validation Data



Immunohistochemical analysis of paraffin-embedded human ovary tumor using 11063-1-AP (SYCE1 antibody) at dilution of 1:50 (under 10x lens).



mouse testis tissue were subjected to SDS PAGE followed by western blot with 11063-1-AP (SYCE1 antibody) at dilution of 1:1000 incubated at room temperature for 1.5 hours.



IP result of anti-SYCE1 (IP:11063-1-AP, 4ug; Detection:11063-1-AP 1:800) with mouse testis tissue lysate 4800ug.



Immunofluorescent analysis of HepG2 cells, using SYCE1 antibody 11063-1-AP at 1:100 dilution and FITC-labeled donkey anti-rabbit IgG(green). Blue pseudocolor = DAPI (fluorescent DNA dye).