

For Research Use Only

SLCO6A1 Polyclonal antibody

Catalog Number: 11078-1-AP



Basic Information

Catalog Number: 11078-1-AP	GenBank Accession Number: BC034976	Purification Method: Antigen affinity purification
Size: 150ul , Concentration: 160 µg/ml by Nanodrop and 147 µg/ml by Bradford method using BSA as the standard;	GeneID (NCBI): 133482	Recommended Dilutions: WB 1:500-1:3000
Source: Rabbit	Full Name: solute carrier organic anion transporter family, member 6A1	
Isotype: IgG	Calculated MW: 719aa, 79 kDa; 657aa, 73 kDa	
Immunogen Catalog Number: AG1532	Observed MW: 73-80 kDa, 51 kDa	

Applications

Tested Applications: WB, ELISA	Positive Controls: WB : HEK-293 cells, HEK-293T cells, Jurkat cells, K-562 cells, mouse kidney tissue
Species Specificity: human, mouse	

Background Information

SLCO6A1, also named as OATP6A1 and SLC21A19, belongs to the organic anion transporter protein (OATPs) family. OATP proteins are reported to mediate the transport of a variety of lowmolecular weight substrates, such as drugs, toxins and steroid hormone conjugates. SLCO6A1 is strongly expressed in testis and weakly expressed in spleen, brain, fetal brain and placenta. SLCO6A1 has 3 isoforms with the molecular mass of 51, 73 and 79 kDa. (PMID: 26861727)

Storage

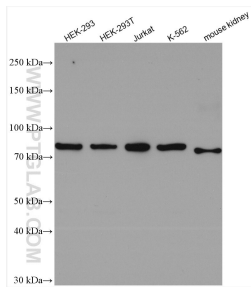
Storage:
Store at -20°C. Stable for one year after shipment.
Storage Buffer:
PBS with 0.02% sodium azide and 50% glycerol pH 7.3.
Aliquoting is unnecessary for -20°C storage

*** 20ul sizes contain 0.1% BSA

For technical support and original validation data for this product please contact:
T: 1 (888) 4PTGLAB (1-888-478-4522) (toll free in USA), or 1(312) 455-8498 (outside USA)
E: proteintech@ptglab.com
W: ptglab.com

This product is exclusively available under Proteintech Group brand and is not available to purchase from any other manufacturer.

Selected Validation Data



Various lysates were subjected to SDS PAGE followed by western blot with 11078-1-AP (SLCO6A1 antibody) at dilution of 1:1500 incubated at room temperature for 1.5 hours.