

For Research Use Only

UBE2A Polyclonal antibody

Catalog Number: 11080-1-AP

3 Publications



Basic Information

Catalog Number:

11080-1-AP

Size:

150ul, Concentration: 300 ug/ml by Nanodrop and 200 ug/ml by Bradford method using BSA as the standard;

Source:

Rabbit

Isotype:

IgG

Immunogen Catalog Number:

AG1567

GenBank Accession Number:

BC010175

GeneID (NCBI):

7319

UNIPROT ID:

P49459

Full Name:

ubiquitin-conjugating enzyme E2A (RAD6 homolog)

Calculated MW:

17 kDa

Observed MW:

17 kDa

Purification Method:

Antigen affinity purification

Recommended Dilutions:

WB 1:500-1:1000

IHC 1:50-1:500

Applications

Tested Applications:

WB, IHC, ELISA

Cited Applications:

WB

Species Specificity:

human

Cited Species:

human, mouse, rat

Positive Controls:

WB : HEK-293 cells, COLO 320 cells, human kidney tissue, human placenta tissue

IHC : human nasopharyngeal carcinoma tissue,

Note-IHC: suggested antigen retrieval with TE buffer pH 9.0; (*) Alternatively, antigen retrieval may be performed with citrate buffer pH 6.0

Background Information

UBE2A (Ubiquitin-conjugating enzyme E2 A) serves as the cognate E2-conjugating enzyme. It plays a critical role in regulating TP53 protein levels under both normal and stress conditions. UBE2A, UBE2B regulates TP53 levels in a "yin-yang" manner through a combination of two distinct mechanisms in mammalian cells (PMID:22083959). This protein has 3 isoforms produced by alternative splicing.

Notable Publications

Author	Pubmed ID	Journal	Application
Bin Li	33604685	Mol Med Rep	WB
Fabienne C Fiesel	24928900	J Cell Sci	WB
Maki Asami	36729835	Cell Rep	WB

Storage

Storage:

Store at -20°C. Stable for one year after shipment.

Storage Buffer:

PBS with 0.02% sodium azide and 50% glycerol pH 7.3.

Aliquoting is unnecessary for -20°C storage

*** 20ul sizes contain 0.1% BSA

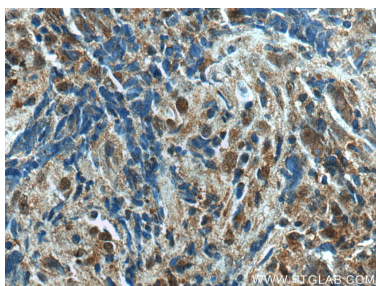
For technical support and original validation data for this product please contact:

T: 1 (888) 4PTGLAB (1-888-478-4522) (toll free in USA), or 1(312) 455-8498 (outside USA)

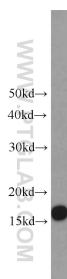
E: proteintech@ptglab.com
W: ptglab.com

This product is exclusively available under Proteintech Group brand and is not available to purchase from any other manufacturer.

Selected Validation Data



Immunohistochemical analysis of paraffin-embedded human nasopharyngeal carcinoma tissue slide using 11080-1-AP (UBE2A antibody) at dilution of 1:200 (under 40x lens)..



HEK-293 cells were subjected to SDS PAGE followed by western blot with 11080-1-AP (UBE2A antibody) at dilution of 1:600 incubated at room temperature for 1.5 hours.