

For Research Use Only

IFT57 Polyclonal antibody

Catalog Number: 11083-1-AP

Featured Product

22 Publications



Basic Information

Catalog Number:

11083-1-AP

Size:

150ul, Concentration: 500 ug/ml by Nanodrop and 350 ug/ml by Bradford method using BSA as the standard;

Source:

Rabbit

Isotype:

IgG

Immunogen Catalog Number:

AG1566

GenBank Accession Number:

BC011899

GeneID (NCBI):

55081

UNIPROT ID:

Q9NWB7

Full Name:

intraflagellar transport 57 homolog (Chlamydomonas)

Calculated MW:

49 kDa

Observed MW:

49 kDa

Purification Method:

Antigen affinity purification

Recommended Dilutions:

WB 1:500-1:2000

IP 0.5-4.0 ug for 1.0-3.0 mg of total protein lysate

IHC 1:50-1:500

IF/ICC 1:200-1:800

Applications

Tested Applications:

WB, IHC, IF/ICC, IP, ELISA

Cited Applications:

WB, IF, IP

Species Specificity:

human, mouse, rat, canine

Cited Species:

human, mouse, rat, chicken

Note-IHC: suggested antigen retrieval with TE buffer pH 9.0; (*) Alternatively, antigen retrieval may be performed with citrate buffer pH 6.0

Positive Controls:

WB : HEK-293 cells, mouse retina tissue, NIH/3T3 cells

IP : HEK-293 cells,

IHC : human prostate cancer tissue, human pancreas tissue

IF/ICC : hTERT-RPE1 cells,

Background Information

IFT57, also named as DERP8, ESRRL1, HIPPI and MHS4R2, belongs to the IFT57 family. It is required for the formation of cilia. IFT57 plays an indirect role in sonic hedgehog signaling, cilia being required for all activity of the hedgehog pathway. It is a component of IFT complex B which composed of IFT88, IFT57, TRAF3IP1, IFT52, IFT27, HSPB11 and IFT20. In contrast to BBS proteins, IFT57 and IFT88 is found in almost every cilium.(PMID:22072986)

Notable Publications

Author	Pubmed ID	Journal	Application
Malavika Raman	26389662	Nat Cell Biol	WB
Ying Hsu	29049287	PLoS Genet	WB
Laura Vuolo	30320547	Elife	WB,IF

Storage

Storage:

Store at -20°C. Stable for one year after shipment.

Storage Buffer:

PBS with 0.02% sodium azide and 50% glycerol pH 7.3.

Aliquoting is unnecessary for -20°C storage

*** 20ul sizes contain 0.1% BSA

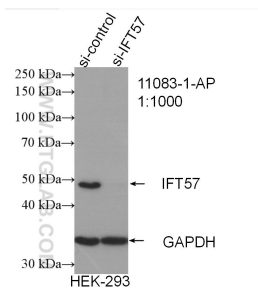
For technical support and original validation data for this product please contact:

T: 1 (888) 4PTGLAB (1-888-478-4522) (toll free in USA), or 1(312) 455-8498 (outside USA)

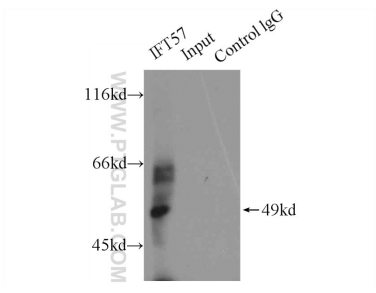
E: proteintech@ptglab.com
W: ptglab.com

This product is exclusively available under Proteintech Group brand and is not available to purchase from any other manufacturer.

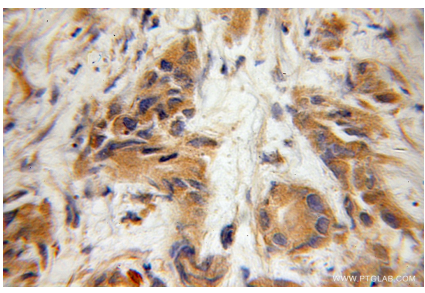
Selected Validation Data



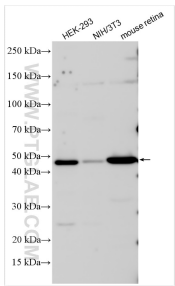
WB result of IFT57 antibody (11083-1-AP; 1:1000; incubated at room temperature for 1.5 hours) with sh-Control and sh-IFT57 transfected HEK-293 cells.



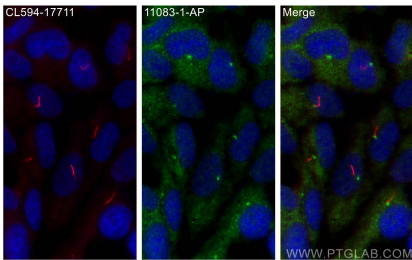
IP result of anti-IFT57 (IP:11083-1-AP, 5ug; Detection:11083-1-AP 1:800) with HEK-293 cells lysate 2000ug.



Immunohistochemical analysis of paraffin-embedded human prostate cancer using 11083-1-AP (IFT57 antibody) at dilution of 1:50 (under 10x lens).



Various lysates were subjected to SDS PAGE followed by western blot with 11083-1-AP (IFT57 antibody) at dilution of 1:1000 incubated at room temperature for 1.5 hours.



Immunofluorescent analysis of (-20°C Methanol) fixed hTERT-RPE1 cells using IFT57 antibody (11083-1-AP) at dilution of 1:400 and CoraLite®488-Conjugated Goat Anti-Rabbit IgG(H+L) (SA00013-2), CoraLite®594 ARL13B antibody (CL594-17711, red).