

For Research Use Only

IFT57 Polyclonal antibody, PBS Only

Catalog Number: 11083-1-PBS

Featured Product



Basic Information

Catalog Number:

11083-1-PBS

Size:

100ug, Concentration: 1 mg/ml by Nanodrop;

Source:

Rabbit

Isotype:

IgG

Immunogen Catalog Number:

AG1566

GenBank Accession Number:

BC011899

GeneID (NCBI):

55081

UNIPROT ID:

Q9NWB7

Full Name:

intraflagellar transport 57 homolog (Chlamydomonas)

Calculated MW:

49 kDa

Observed MW:

49 kDa

Purification Method:

Antigen affinity purification

Applications

Tested Applications:

WB, IHC, IF/ICC, IP, Indirect ELISA

Species Specificity:

human, mouse, rat, canine

Background Information

IFT57, also named as DERP8, ESRRL1, HIPPI and MHS4R2, belongs to the IFT57 family. It is required for the formation of cilia. IFT57 plays an indirect role in sonic hedgehog signaling, cilia being required for all activity of the hedgehog pathway. It is a component of IFT complex B which composed of IFT88, IFT57, TRAF3IP1, IFT52, IFT27, HSPB11 and IFT20. In contrast to BBS proteins, IFT57 and IFT88 is found in almost every cilium. (PMID:22072986)

Storage

Storage:

Store at -80°C.

Storage Buffer:

PBS Only

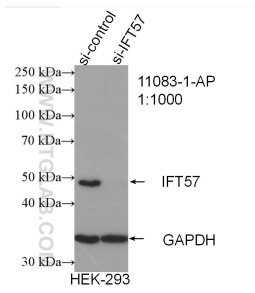
For technical support and original validation data for this product please contact:

T: 1 (888) 4PTGLAB (1-888-478-4522) (toll free in USA), or 1(312) 455-8498 (outside USA)

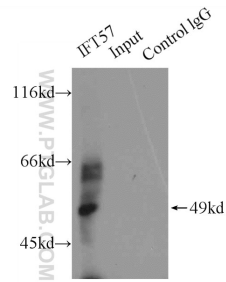
E: proteintech@ptglab.com
W: ptglab.com

This product is exclusively available under Proteintech Group brand and is not available to purchase from any other manufacturer.

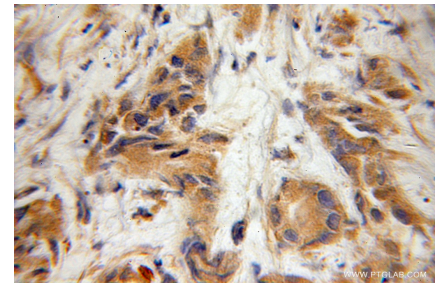
Selected Validation Data



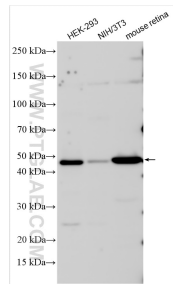
WB result of IFT57 antibody (11083-1-AP; 1:1000; incubated at room temperature for 1.5 hours) with sh-Control and sh-IFT57 transfected HEK-293 cells. This data was developed using the same antibody clone with 11083-1-PBS in a different storage buffer formulation.



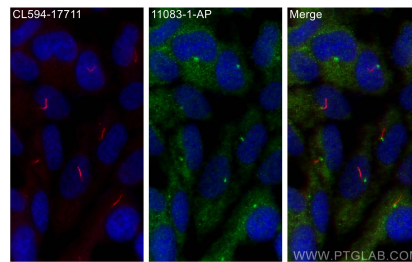
IP result of anti-IFT57 (IP:11083-1-AP, 5ug; Detection:11083-1-AP 1:800) with HEK-293 cells lysate 2000ug. This data was developed using the same antibody clone with 11083-1-PBS in a different storage buffer formulation.



Immunohistochemical analysis of paraffin-embedded human prostate cancer using 11083-1-AP (IFT57 antibody) at dilution of 1:50 (under 10x lens). This data was developed using the same antibody clone with 11083-1-PBS in a different storage buffer formulation.



Various lysates were subjected to SDS PAGE followed by western blot with 11083-1-AP (IFT57 antibody) at dilution of 1:1000 incubated at room temperature for 1.5 hours. This data was developed using the same antibody clone with 11083-1-PBS in a different storage buffer formulation.



Immunofluorescent analysis of (-20°C Methanol) fixed hTERT-RPE1 cells using IFT57 antibody (11083-1-AP) at dilution of 1:400 and CoraLite®488-Conjugated Goat Anti-Rabbit IgG(H+L) (SA00013-2), CoraLite®594 ARL13B antibody (CL594-17711, red). This data was developed using the same antibody clone with 11083-1-PBS in a different storage buffer formulation.