

For Research Use Only

EMAP II Polyclonal antibody

Catalog Number: 11091-1-AP

Featured Product

6 Publications



Basic Information

Catalog Number:

11091-1-AP

Size:

150ul, Concentration: 550 ug/ml by Nanodrop;

Source:

Rabbit

Isotype:

IgG

Immunogen Catalog Number:

AG1560

GenBank Accession Number:

BC014051

GeneID (NCBI):

9255

UNIPROT ID:

Q12904

Full Name:

small inducible cytokine subfamily E, member 1 (endothelial monocyte-activating)

Calculated MW:

34 kDa

Observed MW:

34 kDa and 68 kDa

Purification Method:

Antigen affinity purification

Recommended Dilutions:

WB 1:500-1:2000

IP 0.5-4.0 ug for 1.0-3.0 mg of total protein lysate

IHC 1:50-1:500

IF/ICC 1:50-1:500

Applications

Tested Applications:

WB, IHC, IF/ICC, IP, ELISA

Cited Applications:

WB, IHC, IF

Species Specificity:

human, mouse

Cited Species:

human, rat

Note-IHC: suggested antigen retrieval with TE buffer pH 9.0; (*) Alternatively, antigen retrieval may be performed with citrate buffer pH 6.0

Positive Controls:

WB: HeLa cells, A549 cells, SGC-7901 cells, SH-SY5Y cells, U-251 cells, mouse brain tissue

IP: SGC-7901 cells,

IHC: human cervical cancer tissue,

IF/ICC: HeLa cells,

Background Information

SCYE1 (small inducible cytokine subfamily E, member 1) is also named as EMAP2, AIMP1. The human cDNA encodes a 312-amino acid polypeptide that the predicted 34-kDa precursor can be cleaved to produce an active 20-kDa product (PMID:7929199). SCYE1 is secreted as a result of various stimuli, including TNF- α , heat shock, and hypoxia, and that it acts as a multifunctional cytokine on both endothelial and immune cells (PMID:18292511). Defects in AIMP1 are the cause of leukodystrophy hypomyelinating type 3 (HLD3). It has 2 isoforms produced by alternative splicing and the protein can exist as a dimer (PMID:11306575).

Notable Publications

Author	Pubmed ID	Journal	Application
Krishnendu Khan	36037331	Proc Natl Acad Sci U S A	WB
Xintian Chen	33794309	Cancer Lett	WB
Wei Gao	31287215	Proteomics	WB

Storage

Storage:

Store at -20°C. Stable for one year after shipment.

Storage Buffer:

PBS with 0.02% sodium azide and 50% glycerol pH 7.3.

Aliquoting is unnecessary for -20°C storage

*** 20ul sizes contain 0.1% BSA

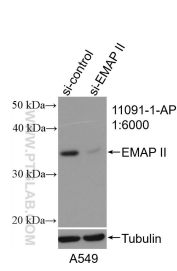
For technical support and original validation data for this product please contact:

T: 1 (888) 4PTGLAB (1-888-478-4522) (toll free in USA), or 1(312) 455-8498 (outside USA)

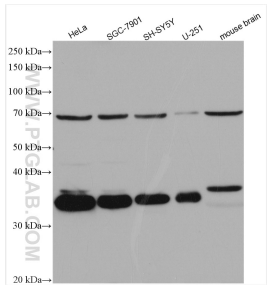
E: proteintech@ptglab.com
W: ptglab.com

This product is exclusively available under Proteintech Group brand and is not available to purchase from any other manufacturer.

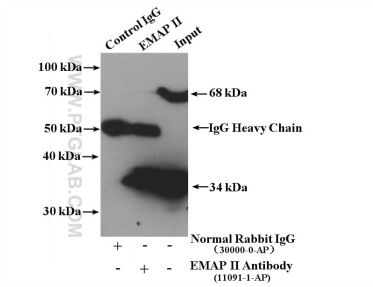
Selected Validation Data



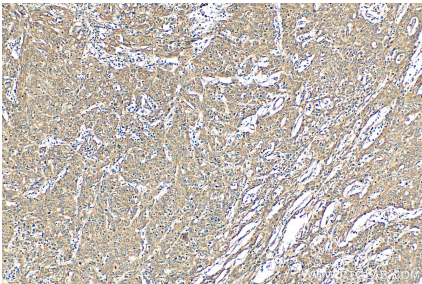
WB result of EMAP II antibody (11091-1-AP; 1:6000; incubated at room temperature for 1.5 hours) with sh-Control and sh-EMAP II transfected A549 cells.



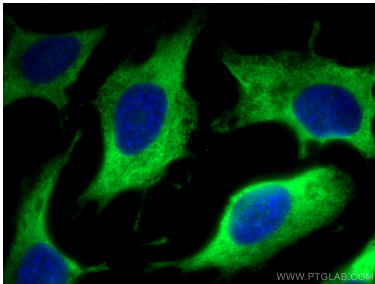
Various lysates were subjected to SDS PAGE followed by western blot with 11091-1-AP (EMAP II antibody) at dilution of 1:1000 incubated at room temperature for 1.5 hours.



IP result of anti-EMAP II (IP:11091-1-AP, 4ug; Detection:11091-1-AP 1:500) with SGC-7901 cells lysate 2200 ug.



Immunohistochemical analysis of paraffin-embedded human cervical cancer tissue slide using 11091-1-AP (EMAP II antibody) at dilution of 1:200 (under 10x lens). Heat mediated antigen retrieval with Tris-EDTA buffer (pH 9.0).



Immunofluorescent analysis of (-20°C Methanol) fixed HeLa cells using EMAP II antibody (11091-1-AP) at dilution of 1:200 and CoraLite®488-Conjugated Goat Anti-Rabbit IgG(H+L).