

For Research Use Only

CLK2 Polyclonal antibody

Catalog Number: 11092-1-AP

Featured Product

1 Publications



Basic Information

Catalog Number:

11092-1-AP

Size:

150ul, Concentration: 350 µg/ml by Nanodrop;

Source:

Rabbit

Isotype:

IgG

Immunogen Catalog Number:

AG1549

GenBank Accession Number:

BC014067

GeneID (NCBI):

1196

Full Name:

CDC-like kinase 2

Calculated MW:

60 kDa

Purification Method:

Antigen affinity purification

Recommended Dilutions:

WB 1:500-1:2000

Applications

Tested Applications:

WB, ELISA

Cited Applications:

WB

Species Specificity:

human, mouse, rat

Cited Species:

human

Positive Controls:

WB : A549 cells, Raji cells

Background Information

Notable Publications

Author	Pubmed ID	Journal	Application
Yongshuai Jin	26124922	Genes Cancer	WB

Storage

Storage:

Store at -20°C. Stable for one year after shipment.

Storage Buffer:

PBS with 0.02% sodium azide and 50% glycerol pH 7.3.

Aliquoting is unnecessary for -20°C storage

*** 20ul sizes contain 0.1% BSA

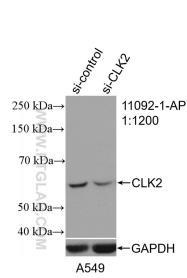
For technical support and original validation data for this product please contact:

T: 1 (888) 4PTGLAB (1-888-478-4522) (toll free in USA), or 1(312) 455-8498 (outside USA)

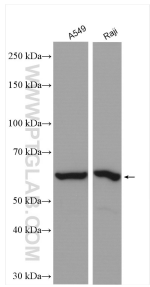
E: proteintech@ptglab.com
W: ptglab.com

This product is exclusively available under Proteintech Group brand and is not available to purchase from any other manufacturer.

Selected Validation Data



WB result of CLK2 antibody (11092-1-AP; 1:1200; incubated at room temperature for 1.5 hours) with sh-Control and sh-CLK2 transfected A549 cells.



Various lysates were subjected to SDS PAGE followed by western blot with 11092-1-AP (CLK2 antibody) at dilution of 1:1000 incubated at room temperature for 1.5 hours.