

For Research Use Only

ETFDH Polyclonal antibody

Catalog Number: 11109-1-AP

Featured Product

9 Publications



Basic Information

Catalog Number:

11109-1-AP

Size:

150ul, Concentration: 700 ug/ml by Nanodrop and 333 ug/ml by Bradford method using BSA as the standard;

Source:

Rabbit

Isotype:

IgG

Immunogen Catalog Number:

AG1568

GenBank Accession Number:

BC011890

GeneID (NCBI):

2110

UNIPROT ID:

Q16134

Full Name:

electron-transferring-flavoprotein dehydrogenase

Calculated MW:

64 kDa

Observed MW:

64 kDa

Purification Method:

Antigen affinity purification

Recommended Dilutions:

WB 1:1000-1:6000

IP 0.5-4.0 ug for 1.0-3.0 mg of total protein lysate

IHC 1:50-1:500

Applications

Tested Applications:

WB, IP, IHC, ELISA

Cited Applications:

WB, IF, IHC

Species Specificity:

human, mouse, rat

Cited Species:

human, mouse

Positive Controls:

WB: mouse brain tissue, HEK-293 cells, rat brain tissue, mouse kidney tissue, mouse skeletal muscle tissue, rat kidney tissue

IP: mouse brain tissue,

IHC: human liver cancer tissue, human liver tissue, human kidney tissue, human prostate cancer tissue

Note-IHC: suggested antigen retrieval with TE buffer pH 9.0; (*) Alternatively, antigen retrieval may be performed with citrate buffer pH 6.0

Background Information

ETFDH(Electron transfer flavoprotein-ubiquinone oxidoreductase, mitochondrial) is also named as ETF-QO and belongs to the ETF-QO/fixC family. It is a 64-kDa monomer integrated in the inner mitochondrial membrane, contains one molecule of FAD and a 4Fe4S cluster(PMID:12815589). Defects in ETFDH are the cause of glutaric aciduria type 2C (GA2C). This antibody is specific to ETFDH.

Notable Publications

Author	Pubmed ID	Journal	Application
Jingwen Xu	30232818	Ann Neurol	WB
Bing Wen	34718578	Hum Mol Genet	WB
Yaxun Wu	31704152	Pathol Res Pract	IHC

Storage

Storage:

Store at -20°C. Stable for one year after shipment.

Storage Buffer:

PBS with 0.02% sodium azide and 50% glycerol pH 7.3.

Aliquoting is unnecessary for -20°C storage

*** 20ul sizes contain 0.1% BSA

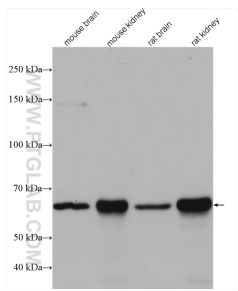
For technical support and original validation data for this product please contact:

T: 1 (888) 4PTGLAB (1-888-478-4522) (toll free in USA), or 1(312) 455-8498 (outside USA)

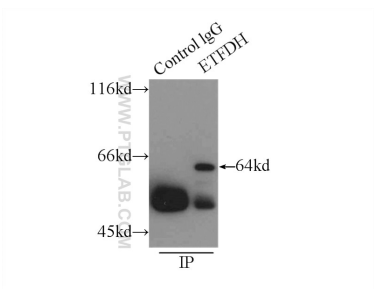
E: proteintech@ptglab.com
W: ptglab.com

This product is exclusively available under Proteintech Group brand and is not available to purchase from any other manufacturer.

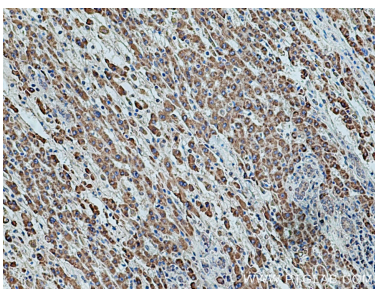
Selected Validation Data



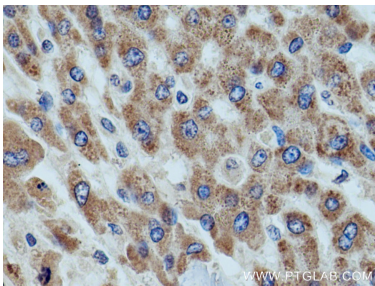
Various lysates were subjected to SDS PAGE followed by western blot with 11109-1-AP (ETFDH antibody) at dilution of 1:3000 incubated at room temperature for 1.5 hours.



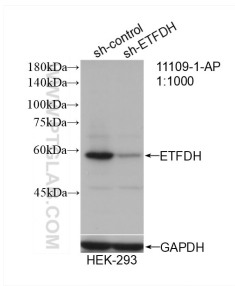
IP result of anti-ETFDH (IP:11109-1-AP, 3ug; Detection:11109-1-AP 1:500) with mouse brain tissue lysate 8000ug.



Immunohistochemical analysis of paraffin-embedded human liver cancer tissue slide using 11109-1-AP (ETFDH antibody) at dilution of 1:200 (under 10x lens). Heat mediated antigen retrieval with Tris-EDTA buffer (pH 9.0).



Immunohistochemical analysis of paraffin-embedded human liver cancer tissue slide using 11109-1-AP (ETFDH antibody) at dilution of 1:200 (under 40x lens). Heat mediated antigen retrieval with Tris-EDTA buffer (pH 9.0).



WB result of ETFDH antibody (11109-1-AP; 1:1000; incubated at room temperature for 1.5 hours) with sh-Control and sh-ETFDH transfected HEK-293 cells.