

For Research Use Only

TAP1 Polyclonal antibody, PBS Only

Catalog Number: 11114-1-PBS

Featured Product



Basic Information

Catalog Number:

11114-1-PBS

Size:

100ug, Concentration: 1 mg/ml by Nanodrop;

Source:

Rabbit

Isotype:

IgG

Immunogen Catalog Number:

AG1619

GenBank Accession Number:

BC014081

GeneID (NCBI):

6890

UNIPROT ID:

Q03518

Full Name:

transporter 1, ATP-binding cassette, sub-family B (MDR/TAP)

Calculated MW:

81 kDa

Observed MW:

70-81 kDa

Purification Method:

Antigen affinity purification

Applications

Tested Applications:

WB, IHC, IF/ICC, IP, Indirect ELISA

Species Specificity:

human, mouse

Background Information

TAP1, also known as ABCB2, PSF1 or RING4, is a member of the ATP-binding cassette (ABC) family of transmembrane transporters and is an essential component of the major histocompatibility complex (MHC) class I antigen-presenting pathway. TAP is involved in the transport of antigens from the cytoplasm to the endoplasmic reticulum for association with MHC class I molecules. It also acts as a molecular scaffold for the final stage of MHC class I folding. Defects in TAP1 are a cause of bare lymphocyte syndrome type 1 (BLS1). Western blot analysis using this antibody detected a major band around 70-80 kDa in HeLa cells.

Storage

Storage:

Store at -80°C.

Storage Buffer:

PBS Only

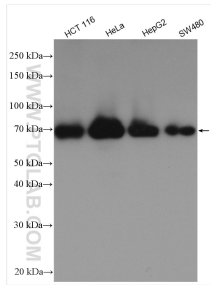
For technical support and original validation data for this product please contact:

T: 1 (888) 4PTGLAB (1-888-478-4522) (toll free in USA), or 1(312) 455-8498 (outside USA)

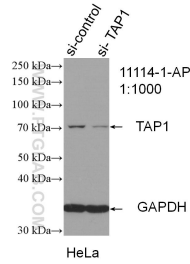
E: proteintech@ptglab.com
W: ptglab.com

This product is exclusively available under Proteintech Group brand and is not available to purchase from any other manufacturer.

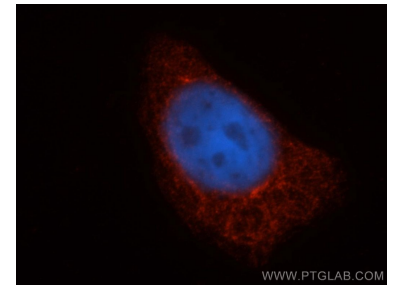
Selected Validation Data



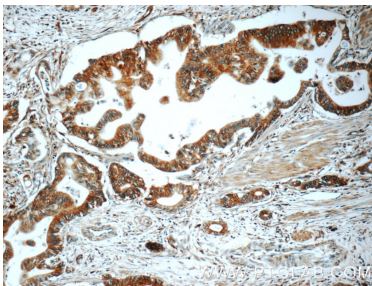
Various lysates were subjected to SDS PAGE followed by western blot with 11114-1-AP (TAP1 antibody) at dilution of 1:3000 incubated at room temperature for 1.5 hours. This data was developed using the same antibody clone with 11114-1-PBS in a different storage buffer formulation.



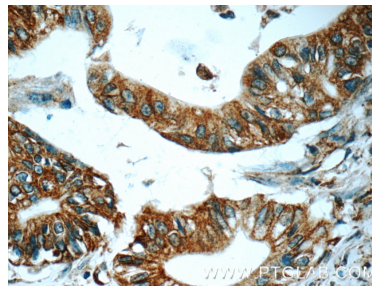
WB result of TAP1 antibody (11114-1-AP; 1:1000; incubated at room temperature for 1.5 hours) with sh-Control and sh-TAP1 transfected HeLa cells. This data was developed using the same antibody clone with 11114-1-PBS in a different storage buffer formulation.



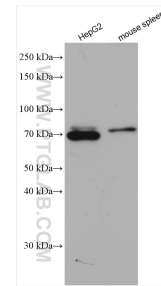
Immunofluorescent analysis of HepG2 cells, using TAP1 antibody 11114-1-AP at 1:50 dilution and Rhodamine-labeled goat anti-rabbit IgG (red). Blue pseudocolor = DAPI (fluorescent DNA dye). This data was developed using the same antibody clone with 11114-1-PBS in a different storage buffer formulation.



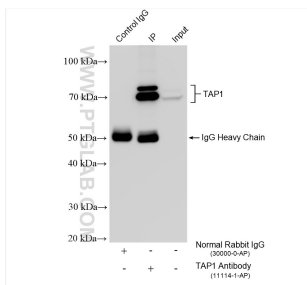
Immunohistochemical analysis of paraffin-embedded human pancreas cancer tissue slide using 11114-1-AP (TAP1 Antibody) at dilution of 1:50 (under 10x lens). This data was developed using the same antibody clone with 11114-1-PBS in a different storage buffer formulation.



Immunohistochemical analysis of paraffin-embedded human pancreas cancer tissue slide using 11114-1-AP (TAP1 Antibody) at dilution of 1:50 (under 40x lens). This data was developed using the same antibody clone with 11114-1-PBS in a different storage buffer formulation.



Various lysates were subjected to SDS PAGE followed by western blot with 11114-1-AP (TAP1 antibody) at dilution of 1:1500 incubated at room temperature for 1.5 hours. This data was developed using the same antibody clone with 11114-1-PBS in a different storage buffer formulation.



IP result of anti-TAP1 (IP: 11114-1-AP, 4ug; Detection: 11114-1-AP 1:3000) with HepG2 cells lysate 1320 ug. This data was developed using the same antibody clone with 11114-1-PBS in a different storage buffer formulation.